

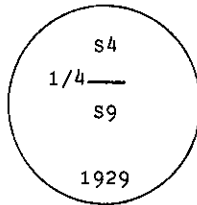
INSTRUCTIONS

1. Original and/or subsequent record used to evaluate the corner position.
2. Description of evidence found, note discrepancies in the record, state method of establishing lost or obliterated corners.
3. Description of monument and accessories set to perpetuate the corner position.
4. Sketch of corner, show all pertinent data which can best be shown in a sketch example, corner marking, topography ties, position of accessories, etc.
5. Certification must be signed and sealed by Land Surveyor registered in the State of Montana.
6. Fill in Cross Index & Section Diagram at bottom of sheet.

CERTIFIED CORNER RECORDATION

Corner S 1/4 of S4 T. 31 N. R. 28 W. P.M.M. Lincoln County

- I. 1929 G.L.O. Resurvey record by W. R. Bandy et al: Set an iron post, 3 ft. long, 1 in. in diam., 24 ins. in the ground to solid rock and 12 ins. in a mound of stone, for the 1/4 sec. cor., with brass cap marked



from which

- A pine, 10 ins. in diam., bears S41°E, 11 lks. (7.26 ft.) dist., mkd. 1/4 S9 BT.
A pine, 12 ins. in diam., bears N15°45'W, 59 lks. (38.94 ft.) dist., mkd. 1/4 S4 BT.

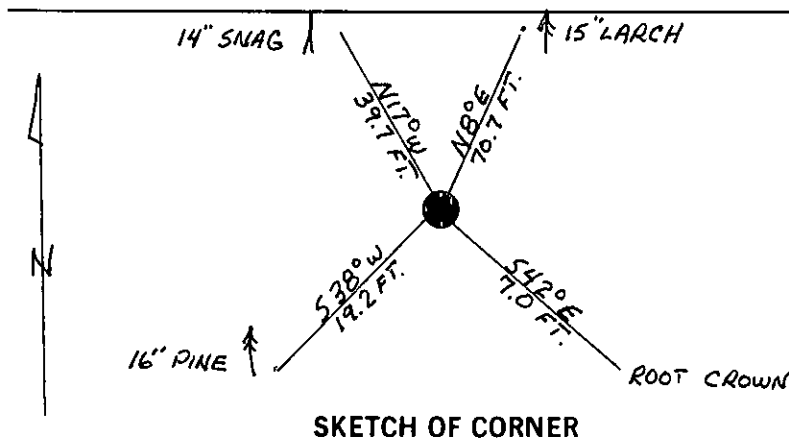
- II. Found a 1 in. diam. iron post, 8 ins. out of the ground, with a 2 1/2 ins. diam. GLO brass cap mkd. as shown from which:

- A root crown, bears S42°E, 7.0 ft. dist., log portion alongside mkd. 1/4 S9 BT.
A pine snag, 14 ins. diam., bears N17°W, 39.7 ft. dist., mkd. 1/4 S4 BT.

- III. Established two new bearing trees

- A larch, 15 ins. diam., bears N8°E, 70.7 ft. dist., mkd. 1/4 S9 BT.
A pine, 16 ins. diam., bears S38°W, 19.2 ft. dist., mkd. 1/4 S9 BT.

Painted red bands around the bearing trees and attached Land Survey Monument and Bearing Tree signs.
Magnetic Declination: 20° East



SKETCH OF CORNER

CERTIFICATION

I, Steve Boyer
certify the information shown herein is true and correct.
Steve Boyer
Signature of Ground Party Chief
I, Alvah F. Hughes
certify that this Corner Record correctly represents work performed by me or under my direction in compliance with the "Corner Recordation Act" (70-22-101, et seq., M.C.A.)
Alvah F. Hughes
Signature of Surveyor & Seal
Date: 1/8/91 Reg. No. 7322
Employer: U.S. FOREST SERVICE

Office of Clerk and Recorder, County of Lincoln. This "corner record" was filed for record on Feb 5, 1991 was noted on the cross-index plat and is assigned page No. 4519, in book No. Coral M Cummings by Bill Buckoff

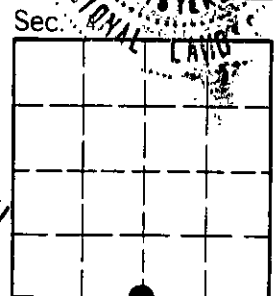
County Official

E-11

31 N

28 W

Cross Index No. T. R. PMM



• - corner this sheet