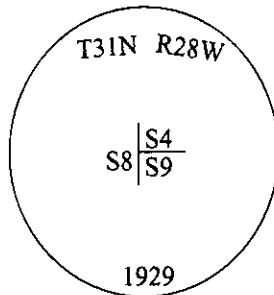


CERTIFIED CORNER RECORDATION

Corner Sec. Cor. Secs. 4 & 9 T. 31N R. 28W P.M., MT Lincoln County

- I. 1903 G.L.O. Record by George A. Fessenden et. al.: Set a slate stone, 16x8x4 ins., 11 ins. in the ground, for cor. of secs. 4,5,8 and 9, mkd. with 5 notches on S. and 4 notches on E. edge. Established four bearing trees:
- 1929 B.L.M. Resurvey Record by William R. Bandy et. al.: A point 12 lks. E. of the cor. of secs. 4,5,8 and 9, which is a granite stone, 12x6, 6 ins. above ground, mkd. and witnessed as described in the field notes on file in the Public Survey Office. This corner will hereafter refer to cor. of secs. 5 and 8 only, therefore I erase the markings on the NE and SE bearing trees. Set an iron post, 3 ft. long, 2 ins. in diam., 26 ins. in the ground to solid rock and 10 ins. in a mound of stone, for the cor. of secs. 4 and 9 only, with brass cap mkd. as shown.



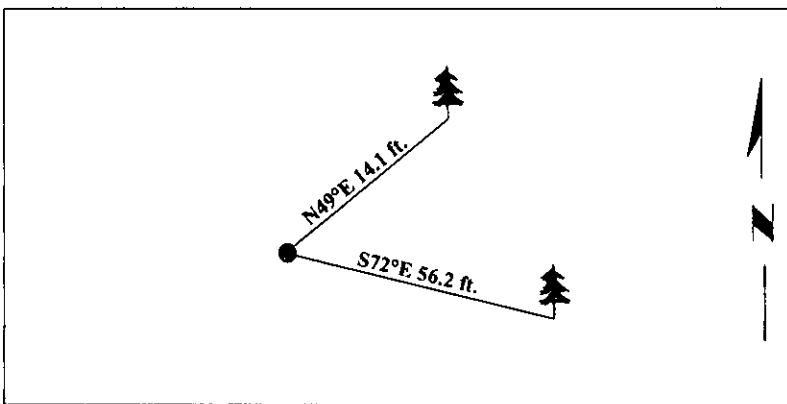
Established two bearing trees:

- A fir, 8 ins. in diam., bears N20°E, 31 lks. dist., mkd. "T31N R28W S4 BT".
A pine, 10 ins. in diam., bears S35°E, 6 lks. dist., mkd. "T31N R28W S9 BT".

- II. Found a 2 in. diam. iron pipe, firmly set, protruding 12 ins. above the ground, with a 2 1/2 in. diam. brass cap, mkd. as shown. No evidence of bearing trees.
- III. Established two new bearing trees:
- A fir, 8 ins. diam., bears N49°E, 14.1 ft. dist., mkd. "T31N R28W S4 BT".
A larch, 16 ins. diam., bears S72°E, 56.2 ft. dist., mkd. "T31N R28W S9 BT".

Painted bearing trees and attached Land Survey Monument and Bearing Tree signs.

Magnetic Declination: 20° East



SKETCH OF CORNER

CERTIFICATION

I. Rex O. Rice
certify the information shown herein is true and correct.

Rex O. Rice

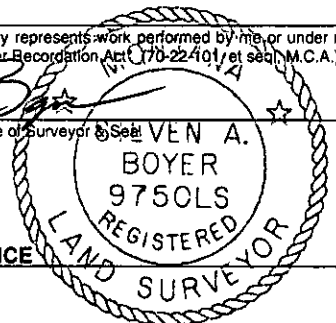
I. Steven A. Boyer
certify that this Corner Record correctly represents work performed by me or under my direction in compliance with the "Corner Recordation Act" (70-22-101 et seq., M.C.A.)

Steven A. Boyer
Signature of Surveyor or Seal

Date: 9/17/98

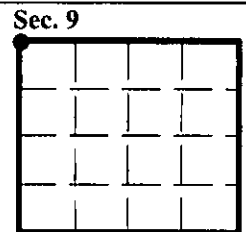
Reg. No.: 9750LS

Employer: U.S. FOREST SERVICE



Office of Clerk and Recorder, County of Lincoln. This "corner record" was filed for record on 11-18-98 and was noted on the cross-index plat and is assigned page No. 10267 in book No. _____.

Carol M. Cummings
County Official



● - corner this sheet