

INSTRUCTIONS

1. Original and/or subsequent record used to evaluate the corner position.
2. Description of evidence found, note discrepancies in the record, state method of establishing lost or obliterated corners.
3. Description of monument and accessories set to perpetuate the corner position.
4. Sketch of corner, show all pertinent data which can best be shown in a sketch example, corner marking, topography ties, position of accessories, etc.
5. Certification must be signed and sealed by Land Surveyor registered in the State of Montana.
6. Fill in Cross Index & Section Diagram at bottom of sheet.

CERTIFIED CORNER RECORDATION

Corner SW S27 T. 31N. R. 26W. P.M.M. Lincoln County

- I. 1893 Original GLO Record: Set a limestone, 25x10x6 ins. 19 ins. in the ground, for cor. to secs. 27, 28, 33, and 34, marked with 1 notch on the S. and 3 notches on the E. edges; marked 4 bearing trees.

1971 BLM Remonumentation: The cor. of secs. 27, 28, 33, and 34 monumented with a limestone, 20x10x6 ins., set 16 ins. in the ground, marked 1 notch on the S. and 3 notches on the E. edges, and witnessed by the remains of three of the original bearing trees:

At the corner point,

Set an iron post, 30 ins. long, 2½ ins. diam., 8 ins. in the ground, to bedrock, and in a supporting mound of stone, 5½ ft. base, to top, with brass cap marked as shown, from which:

T31N R26W
S28 | S27
S33 | S34
1971

The original bearing trees:

A spruce snag, 10 ins. diam., bears S38°E, 53 lks. dist., marked T31N R26W S34 BT.

A dead spruce, 8 ins. diam., bears S35°W, 26 lks. dist., marked T31N R26W S33 BT. (Record: 46 lks.)

A dead spruce, 8 ins. diam., bears N49°W, 46 lks. dist., marked T31N R26W S28 BT.

The new bearing trees:

A spruce, 7 ins. diam., bears N56°E, 42 lks. dist., marked T31N R26W S27 BT.

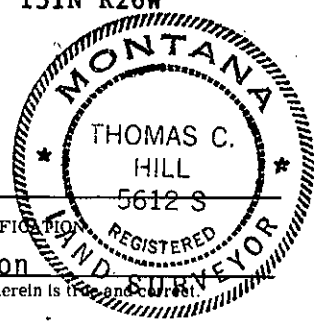
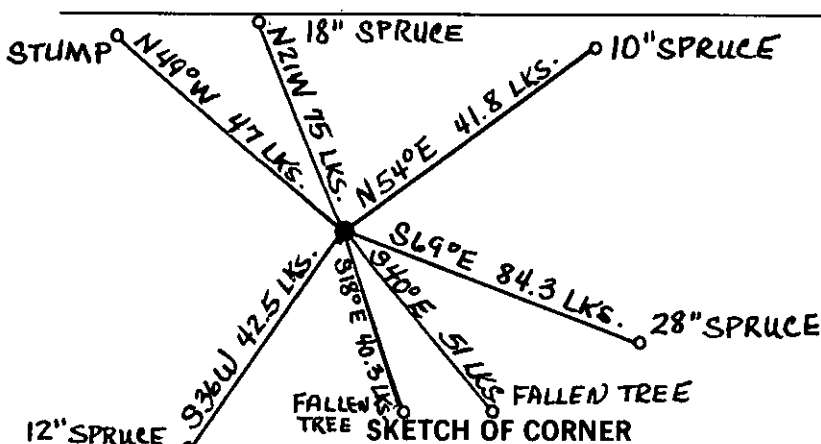
A spruce, 12 ins. diam., bears S17°E, 41 lks. dist., marked T31N R26W S34 BT.

A spruce, 10 ins. diam., bears S35½°W, 42 lks. dist., marked T31N R26W S33 BT.

A spruce, 15 ins. diam., bears N21°W, 75 lks. dist., marked T31N R26W S28 BT.

Bury the original stone alongside the iron post.

(over)



1. Gary C. Crismon
certify the information shown herein is true and correct.

Gary C. Crismon
Signature Ground Party Chief

1. Thomas C. Hill
certify that this Corner Record correctly represents work performed by me or under my direction in compliance with the "Corner Recordation Act", (70-22-101, et seq., M.C.A.)

Thomas C. Hill
Signature of Surveyor & Seal

Date: 1-25-85 Reg. No. 5612S

Employer: U.S.F.S.

Office of Clerk and Recorder, County of Lincoln. This "corner

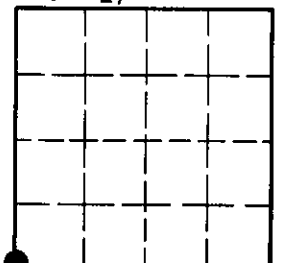
record" was filed for record on Jan 28, 1985

was noted on the cross-index plat and is assigned page No. 2911, in

book No. _____

Janet BF Supel by Bill Basile
County Official Deputy

Sec. 27



• - corner this sheet

Cross Index No. _____ T. _____ R. _____ P.M.M.

Adopted July 1, 1981, Montana Board of Professional Engineers & Land Surveyors

INSTRUCTIONS TO SURVEYORS FOR COMPLETION OF CERTIFIED CORNER RECORDATION FORMS

I. ORIGINAL AND/OR SUBSEQUENT RECORD:

This item should describe or quote those portions of the original or subsequent record which were used in evaluating the corner position. The original record will usually be the General Land Office field notes. Subsequent record can come from several sources: Previously filed corner records, maps and plats, private and public records, etc. Some of the subsequent record, even though not in the public record, but known to have validity by the surveyor, may be quoted and appropriately noted.

The record data helps support the reestablished corner position because it clearly shows what history the surveyor based his corner position on. In some cases, however, the record may be unknown or not pertinent. A statement to that effect should appear on the corner record.

II. DESCRIPTION OF EVIDENCE FOUND OR METHOD OF LOCATING CORNER POSITION:

This item will describe the original or subsequent record evidence found. If portions of the found evidence cannot be reconciled with the record, then the disregarded record should be noted, and, if possible, an opinion as to its cause narrated.

If no physical evidence of the original or subsequent monuments and accessories can be found, then the method used to reestablish the lost or obliterated corner (single proportion, fence intersection, parol evidence, terrain calls, centerline of road, etc.) shall be indicated.

III. DESCRIPTION OF MONUMENTS AND ACCESSORIES SET TO PERPETUATE THE CORNER POSITION:

This item should list all details about the corner and its location which will help exclusively identify the corner position; including size and type of monument, how marked if not shown in sketch, and distinguishing topographic calls which help locate the corner. In many cases, instructions on how to find the corner should be included.

References or ties to other corners are optional and may be drawn on the face or back of the corner record form, or references to Certificate of Survey may be made. Separate drawings may be attached to the corner form.

If state plane coordinate values for the corner position are shown, then the control upon which they are based should be indicated.

IV. SKETCH OF CORNER:

This item will usually show how a found or set corner is marked and may also show topography or accessory monuments found or set and their relation to the corner. There is no stipulated format; the sketch could be transcribed field note entries.

V. CERTIFICATION:

The name and signature of the ground party chief is optional.

The Surveyor who performed or directed the field work which is depicted on the "Certified Corner Record" shall sign and affix his seal in the Certification.

The employer blank is optional but useful in tracking down original field note data or adjacent record if, in the future, questions arise about the corner.

VI.

The Cross Index at the bottom of the page should be completed by the Surveyor. Only the single Township Index where the corner is filed shall be completed.

The lower righthand corner is a corner location diagram and should have the pertinent section filled in at the top and a closed circle indicating the appropriate corner position in the section filled in. This is intended to be an aid in searching the "Record" once it has been filed.

II. I found a BLM brass cap, in a 3½ ft. diam., 2 ft. high mound of stone, from which:

A spruce, 10 ins. diam., bears N54°E, 41.8 lks. dist., scribing visible.

A fallen tree, bears S40°E, 51 lks. dist., scribing visible.

A spruce, 12 ins. diam., bears S36°W, 42.5 lks. dist., scribing visible.

A spruce, 18 ins. diam., bears N21°W, 75 lks. dist., scribing visible.

A fallen tree, bears S18°E, 40.3 lks. dist., scribing visible.

A stump, bears N49°W, 47 lks. dist., scribing visible on a log laying alongside.

III. I set a galvanized steel guard post with a Survey Marker decal attached, bears South, 3 lks. dist. I painted red bands around bearing trees and attached BT and Land Survey Monument signs.

I established one new bearing tree:

A spruce, 28 ins. diam., bears S69°E, 84.3 lks. dist., marked T31N R26W S34 BT.