

**INSTRUCTIONS**

1. Original and/or subsequent record used to evaluate the corner position.
2. Description of evidence found, note discrepancies in the record, state method of establishing lost or obliterated corners.
3. Description of monument and accessories set to perpetuate the corner position.
4. Sketch or corner, show all pertinent data which can best be shown in a sketch example, corner marking, topography ties, position of accessories, etc.
5. Certification must be signed and sealed by Registered Land Surveyor in State of Montana.
6. Fill in Cross Index & Section Diagram at bottom of sheet.

**CERTIFIED CORNER RECORDATION**

Corner N - S 1/64 Sec. 13 T. 31 N., R. 26 W., P.M.M. Lincoln County  
& Flathead County

Record: There is no record of evidence that this corner has been monumented previously.

Set: At the midpoint between the east 1/4 corner of Section 13 and the S. 1/16 corner on the east line of Section 13, a 2½ ins. diam. x 30 ins. long aluminum pipe 24 ins. in the ground, with a 3 ins. diam. aluminum cap marked as shown. From the cap:

A spruce, 8 ins. diam., bears S. 82° W., 86.7 ft. distant, blazed and scribed: "NS 1/64 S. 13 RM."

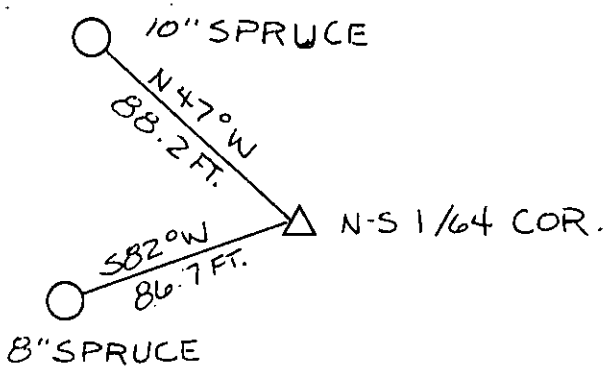
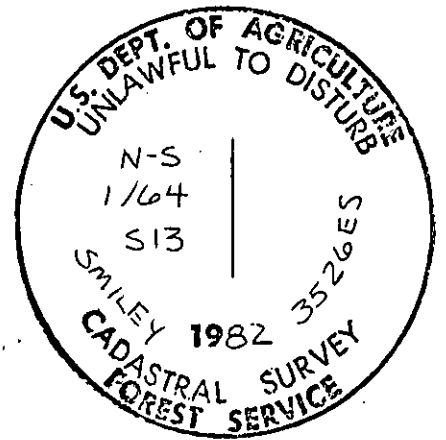
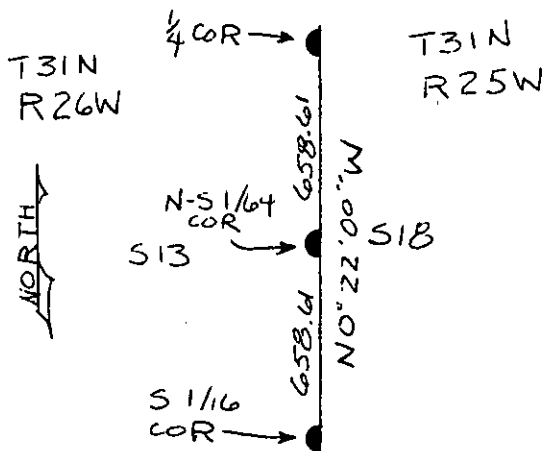
A spruce, 10 ins. diam., bears N. 47° W., 88.2 ft. distant, blazed and scribed: "NS 1/64 S. 13 RM."

A lodgepole pine, 5 ins. diam., with a location poster attached, bears S. 54° W., 16.6 ft. distant.

"BT" and "Attention" signs were attached to the accessories.

Bearings were determined using a Silva compass with declination set at 20° E.

Discussion: A closed, field traverse, utilizing a Kern DKM 2-AE Theodolite and Hewlett-Packard E.D.M., was performed in order to determine the position of this corner. Relative positions are shown below.



**SKETCH OF CORNER**

**CERTIFICATION**

**James L. Carter**

I, James L. Carter, certify the information shown herein is true and correct.

*James L. Carter*  
Signature Ground Party Chief

I, Daniel C. Smiley, certify that this Corner Record correctly represents work performed by me or under my direction in compliance with the "Corner Recordation Act" (70-22-101, et seq., M.D.A.)

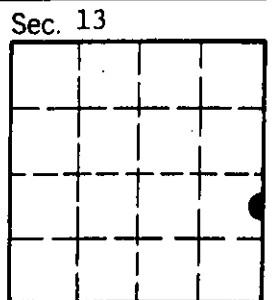
*Daniel C. Smiley*  
Signature of Surveyor & Seal

Date: 3/11/83 Reg. No. 3526 ES

Employer: Flathead National Forest

Office of Clerk and Recorder, County of LINCOLN. This "corner record" was filed for record on the MARCH 15 day of 1983 was noted on the cross-index plat and is assigned page No. 2194, in book No. \_\_\_\_\_

Janet BF Siegel by Betty L. Conces  
County Official deputy



Cross Index No. L/M - 25 T. 31 N. R. 26 W. P.M.M.  
 (L/M - 1 T. 31 N., R. 25 W.)

• corner this sheet