

- INSTRUCTIONS
1. Original and/or subsequent record used to evaluate the corner position.
 2. Description of evidence found, note discrepancies in the record, state method of establishment, lost or obliterated corners.
 3. Description of monument and accessories set to perpetuate the corner position.
 4. Sketch of corner, show all pertinent data which can best be shown in a sketch example, corner marking, topography ties, position of accessories, etc.
 5. Certification must be signed and sealed by Registered Land Surveyor in State of Montana.
 6. Fill in Cross Index & Section Diagram at bottom of sheet.

CERTIFIED CORNER RECORDATION

Corner S 1/16 Sec. 13 T. 31 N., R. 26 W., P.M.M. Lincoln County
& Flathead County

Record: There is no record or evidence that this corner has been monumented previously.

Set: At midpoint between the section corner common to section 13 and 24, and the east 1/4 corner of section 13, a 2½ ins. diam., x 30 ins. long, aluminum pipe 24 ins. in the ground, with a 3 ins. diam. aluminum cap marked as shown. From the cap:

An alpine fir, 8 ins. diam., bears N. 45° W., 19.9 ft. distant, blazed and scribed "S. 1/16 S. 13 RM."

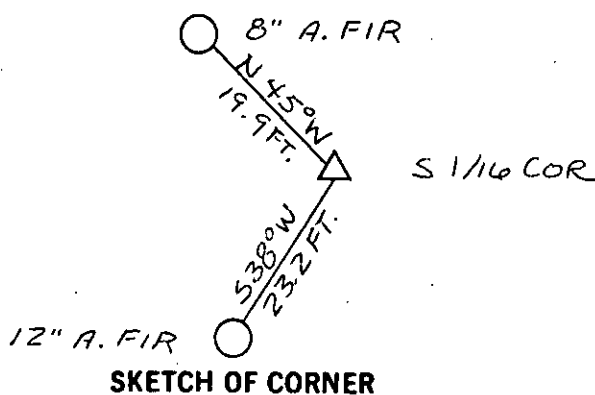
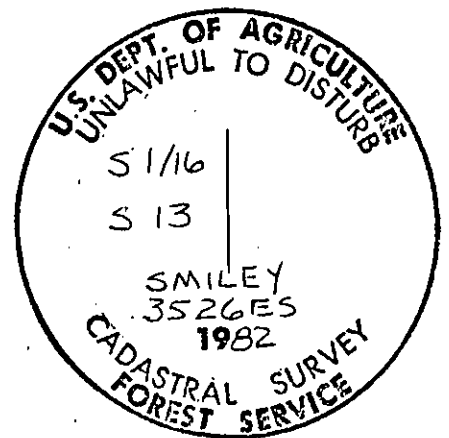
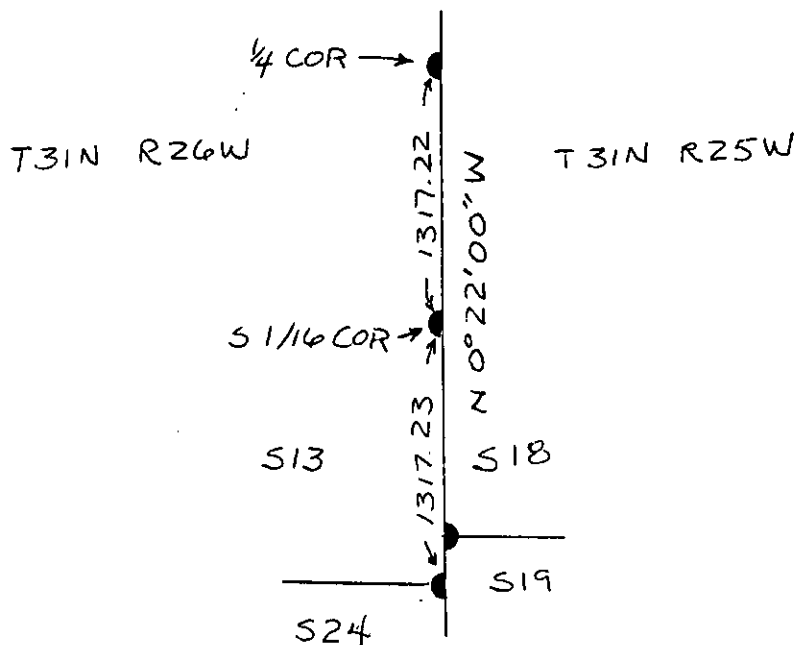
An alpine fir, 12 ins. diam., bears S. 38° W., 23.2 ft. distant, blazed and scribed "S. 1/16 S. 13 RM."

An alpine fir, 7 ins. diam., with a location poster attached, bears N. 82° W., 6.0 ft. distant.

"BT" and "Attention" signs were attached to the accessories. Bearings were determined using a Silva compass with a declination set at 20° E.

Discussion A closed, field traverse, utilizing a Kern DKM 2-AE Theodolite and Hewlett-Packard E.D.M., was performed in order to determine the position for this corner.

Relative positions are shown below.

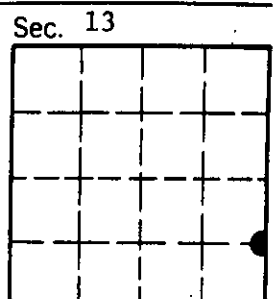


SKETCH OF CORNER

CERTIFICATION
James L. Carter
I, _____, certify the information shown hereth is true and correct.
Signature (Ground Party Chief)
Daniel C. Smiley
I, _____, certify that this Corner Record correctly represents work performed by me or under my direction in compliance with the "Corner Recordation Act" (70-22-101, et seq., M.D.A.)
Signature of Surveyor & Seal
Date: 3/11/83 Reg. No. 3526 ES
Employer: Flathead National Forest

Office of Clerk and Recorder, County of LINCOLN. This "corner record" was filed for record on the MARCH 15 day of 1983 was noted on the cross-index plat and is assigned page No. 2193, in book No. _____
Janet BF Siegel by Betty L. Conces
County Official deputy

Cross Index No. M - 25 T. 31 N., R. 26 W., P.M.M.
(M - 1 T. 31 N., R. 25 W.,



• - corner this sheet