

INSTRUCTIONS

1. Original and/or subsequent record used to evaluate the corner position.
2. Description of evidence found, note discrepancies in the record, state method of establishing lost or obliterated corners.
3. Description of monument and accessories set to perpetuate the corner position.
4. Sketch or corner, show all pertinent data which can best be shown in a sketch example, corner marking, topography ties, position of accessories, etc.
5. Certification must be signed and sealed by Registered Land Surveyor in State of Montana.
6. Fill in Cross Index & Section Diagram at bottom of sheet.

CERTIFIED CORNER RECORDATION

Corner No. 4, H.E.S. 355 T. 31 N., R. 26 W., P.M.M. Lincoln County

Record: H.E.S. Survey by Elmer R. Johnson, October 1915.

Set, for Cor. No. 4, a slate stone, 26 x 15 x 5 ins., 16 ins. in the ground, marked 4 H.E.S. 355 on SW. face, and a cross (x) on top for the exact corner point, from which

A cross (x) on a spruce, 9 ins. dia., bears N.2°30'E., 14 lks. dist.

A cross (x) on a black pine, 14 ins. dia., bears S.39°40'E., 25 lks. dist., each blazed and scribed 4 H.E.S. 355 BT.

Raise a mound of earth, 4 ft. base, 2 ft. high, SW. of corner.

Resurvey by Claude F. Warner and Ernest Parker, 1932.

From this point corner No. 4 of H.E.S. No. 355, bears S.26°15'W., 91 lks. dist.; a limestone 18 x 6 x 10 ins. above ground, firmly set, marked and witnessed as described in the official record; except the SE. bearing tree was dead, I mark another tree for a bearing tree as follows: -

A fir, 8 ins. diam., bears S. 17°45'E., 48 lks. dist., marked Cor 4
H E S 355 B T.

Found: A stone 6" x 14" x 12" above ground, marked 4 HES 355 on S.E. face and X on top, from which

A 9" fir bears S.18°E., 31.8 ft., dead and standing, scribing visible.

A 12" spruce stump bears N.2°E., 9.3 ft., scribing visible.

A root crown bears S.40°E., 16.6 ft., axe marks visible.

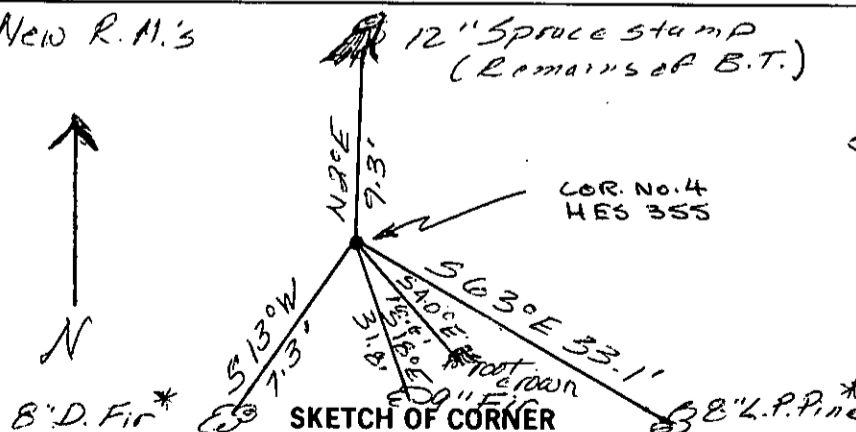
Set: We leave stone as it is in excellent condition; we establish new reference monuments as follows:

An 8" lodgepole pine bears S.63°E., 33.1 ft.
scribed: X 4 HES 355 RM.

An 8" Douglas-fir bears S.13°W., 7.3 ft., scribed:
X 4 HES 355 RM.

We attach appropriate signs.

* New R.M.'s



CERTIFICATION

Linda S. Smith

I, Linda S. Smith, certify the information shown herein is true and correct.

Signature Ground Party Chief

Daniel C. Smiley

I, Daniel C. Smiley, certify that this Corner Record correctly represents work performed by me or under my direction in compliance with the "Corner Recordation Act" (70-22-101, et seq., M.D.A.)

Signature of Surveyor & Seal

Date: 12/21/82 Reg. No. 3526 ES

Employer: Flathead National Forest

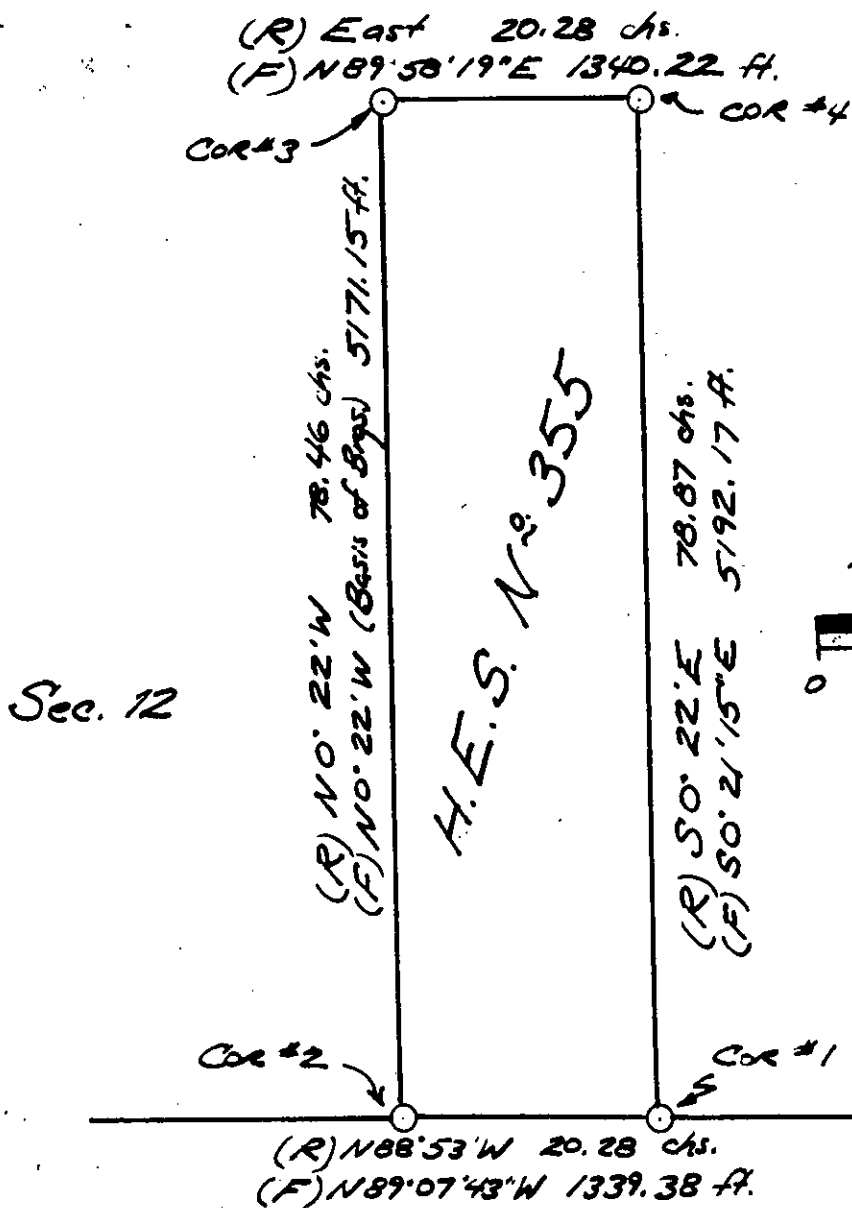
Office of Clerk and Recorder, County of Lincoln. This "corner record" was filed for record on the January 20 day of 1983 was noted on the cross-index plat and is assigned page No. 2152, in book No. _____

Janet B.F. Siegel by Betty L. Conner
County Official deputy

Cross Index No. E - 23 T. 31 N., R. 26 W., P.M.M.

Sec. 12

• corner this sheet



Sec. 13

RECEIVED
 JAN 10
 1910
 U.S. DEPT. OF AGRICULTURE
 BUREAU OF LAND MANAGEMENT