

INSTRUCTIONS

1. Original and/or subsequent record used to evaluate the corner position.
2. Description of evidence found, note discrepancies in the record, state method of establishing lost or obliterated corners.
3. Description of monument and accessories set to perpetuate the corner position.
4. Sketch or corner, show all pertinent data which can best be shown in a sketch example, corner marking, topography ties, position of accessories, etc.
5. Certification must be signed and sealed by Registered Land Surveyor in State of Montana.
6. Fill in Cross Index & Section Diagram at bottom of sheet.

CERTIFIED CORNER RECORDATION

Corner No. 2 H.E.S. 355 T. 31 N., R. 26 W., P.M.M. Lincoln County

Record: H.E.S. Survey by Elmer R. Johnson, October 1915.

Set for Cor. No. 2, a slate stone 28 x 12 x 5 ins., 18 ins. in the ground, marked 2 H.E.S. 355 on NE face, and a cross (x) on top for the exact corner point, from which

A cross (x) on a spruce 20 ins. dia., bears N.55°05'W., 13 lks.

A cross (x) on a spruce 10 ins. dia., bears S.74°10'E., 13 lks. dist., each blazed and scribed 2 H.E.S. 355 BT.

Raise a mound of earth, 4 ft. base, 2 ft. high, NE. of corner.

Resurvey by Claude F. Warner and Ernest Parker, 1933.

Cor. No. 2 of H.E.S. No. 355, which is a limestone 14 x 8 x 4 ins. above ground, firmly set, marked and witnessed as described in the official record.

Found: A stone 4" x 12" x 11" above ground marked 2 HES 355 on N.E. face, and X on top; the stone is in excellent condition, from which

A 30" spruce stump bears N.55°W., 7.5 ft., scribed BT on stump and 2 HES 355 on long butt lying alongside; long butt is also scribed H W on what would be the SW face. *

A 20" spruce snag bears S.62°W., 17.5 ft. scribed H W *

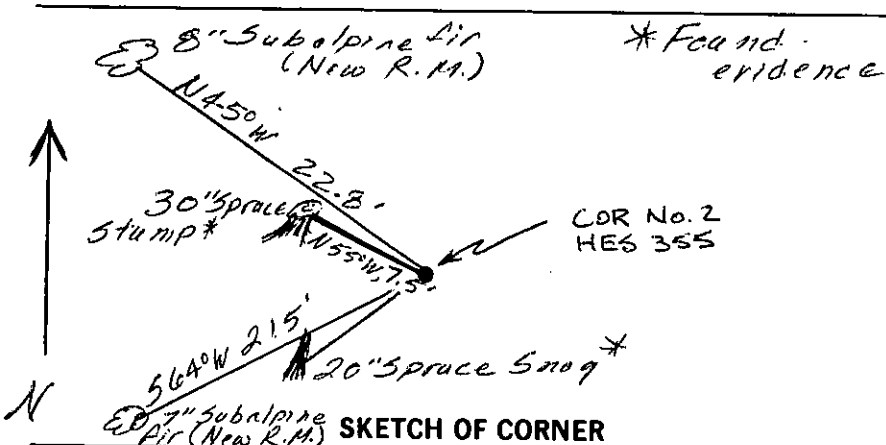
* Origin of this scribing unknown; presumed to be undestroyed evidence of 1st corner.

Set: We leave found stone and establish new R.M.'s:

An 8" subalpine fir bears N.45°W., 22.8 ft., scribed: X 2 HES 355 RM

A 7" subalpine fir bears S.64°W., 21.5 ft., scribed: X 2 HES 355 RM

We attach appropriate signs.



CERTIFICATION

I, Linda S. Smith
 certify the information shown herein is true and correct.

Linda S. Smith
 Signature Ground Party Chief

I, Daniel C. Smiley
 certify that this Corner Record correctly represents work performed by me or under my direction in compliance with the "Corner Recordation Act" (70-22-101, et seq., M.D.A.)

Daniel C. Smiley
 Signature of Surveyor & Seal

Date: 12/21/82 Reg. No. 3526 ES
 Employer: Flathead National Forest

Office of Clerk and Recorder, County of Lincoln. This "corner record" was filed for record on the Jan. 20 day of 1983 was noted on the cross-index plat and is assigned page No. 2150, in book No. _____

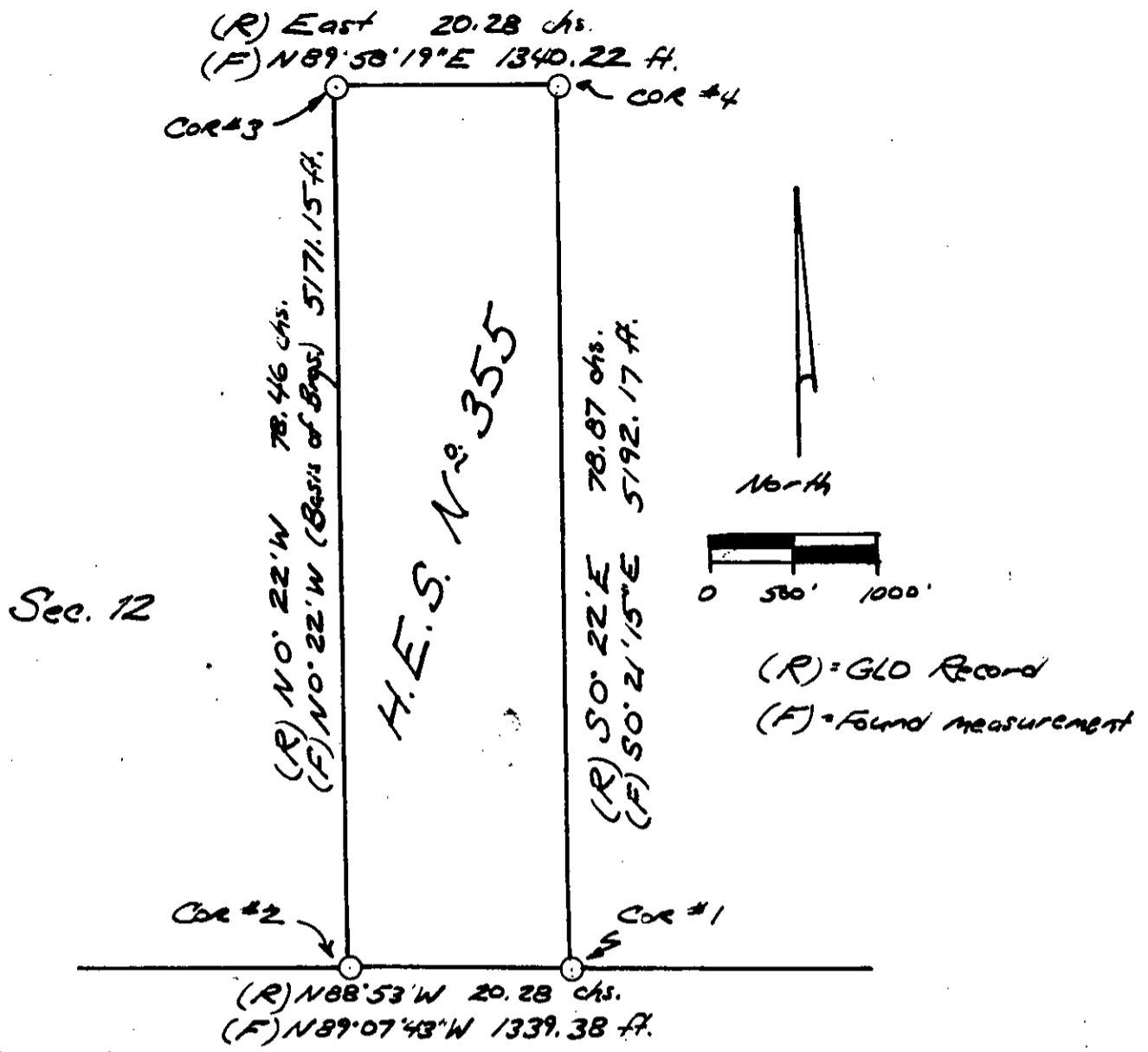
Janet B.F. Siegel by Betty L. Conces
 County Official deputy

Cross Index No. J - 22 T. 31 N., R. 26 W., P.M.M.

Sec. 12

HES 355			

• corner this sheet



Sec. 13

