

INSTRUCTIONS

1. Original and/or frequent record used to evaluate the corner position.
2. Description of evidence found, note discrepancies in the record, state method of establishing lost or obliterated corners.
3. Description of monument and accessories set to perpetuate the corner position.
4. Sketch or corner, show all pertinent data which can best be shown in a sketch example, corner marking, topography ties, position of accessories, etc.
5. Certification must be signed and sealed by Registered Land Surveyor in State of Montana.
6. Fill in Cross Index & Section Diagram at bottom of sheet.

CERTIFIED CORNER RECORDATION

Corner $\frac{1}{4}$ $\frac{12}{13}$ also Cor. No. 1 T. 31N., R. 26 W., P.M.M. Lincoln County
H.E.S. 355

Record: G.L.O. Survey by James S. Keerl and Abram L. Jaqueth, August 1893.

Set a post 3 ft. long, 3 ins. square, 24 ins. in the ground for 1/4 sec. cor., marked 1/4 S. on N. face from which

A fir tree 7 ins. diam. bears N.15°W., 37 lks. distant marked 1/4 S. B.T.

A pine tree 4 ins. diam. bears S.65°W., 42 lks. distant marked 1/4 S. B.T.

H.E.S. Survey by Elmer R. Johnson, October 1915.

Re-establishment of the 1/4 Cor. of Secs. 12 and 13, T. 31 N., R. 26 W.

Set for the legal 1/4 Cor. of Secs. 12 and 13, a pine post 6 x 6 x 42 ins., 30 ins. in the ground, over a stone, marked with a cross (x), marked 1/4 S on N. face, and a nail in top for the exact corner point, from which

A cross (x) on a spruce, 8 ins. dia., bears N.34°05'W., 82 lks. dist., blazed and scribed 1/4 S 12 BT.

A cross (x) on a black pine, 15 ins. dia., bears S.30°10'W., 52 lks. dist., blazed and scribed 1/4 S 13 BT.

Beginning at Cor. No. 1, identical with the 1/4 Cor. of Secs. 12 and 13, heretofore described, Set a stake alongside, marked 1 H.E.S. 355 on NW. face.

From the nail in the Sec. Cor.,

A cross (x) on a spruce, 8 ins. dia., bears N.34°05'W., 82 lks. dist.

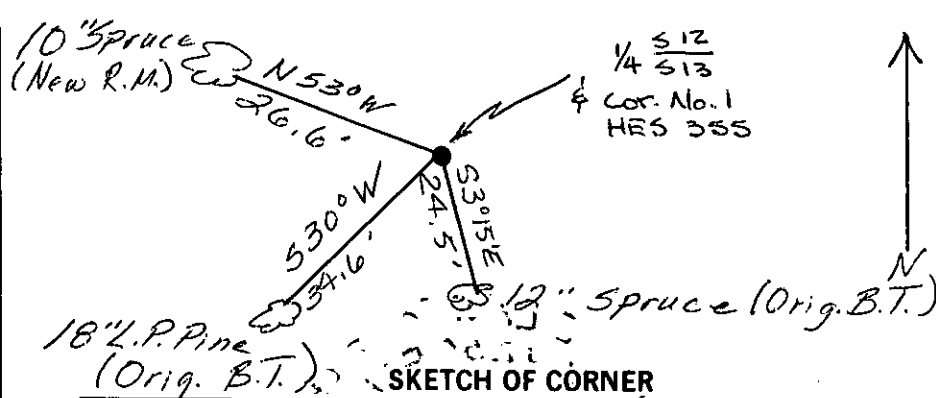
A cross (x) on a black pine 15 ins. dia., bears S.30°10'W., 52 lks. dist., each blazed and scribed 1 H.E.S. 355 BT.

Raise a mound of earth, 4 ft. base, 2 ft. high, NW. of corner.

Resurvey by Claude F. Warner & Ernest Parker, 1933.

The 1/4 sec. cor. of secs. 12 and 13, which is also cor. No. 1 of H.E.S. No. 355, is a pine post, 6 ins. sq. 16 ins. above ground, marked and witnessed as described in the official record; except the SW. bearing tree was dead, I mark a new one as follows: -

A spruce, 6 ins. diam., bears S.3°15'E., 37 lks. dist., marked Cor No 1 H E S 355 1/4 S 13 B T. (over)



CERTIFICATION

I, Linda S. Smith

certify the information shown herein is true and correct.

Linda S. Smith
Signature Ground Party Chief

I, Daniel C. Smiley

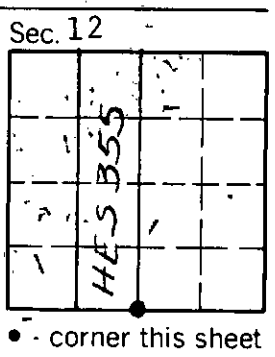
certify that this Corner Record correctly represents work performed by me or under my direction in compliance with the "Corner Recordation Act" (70-22-101, et seq., M.D.A.)

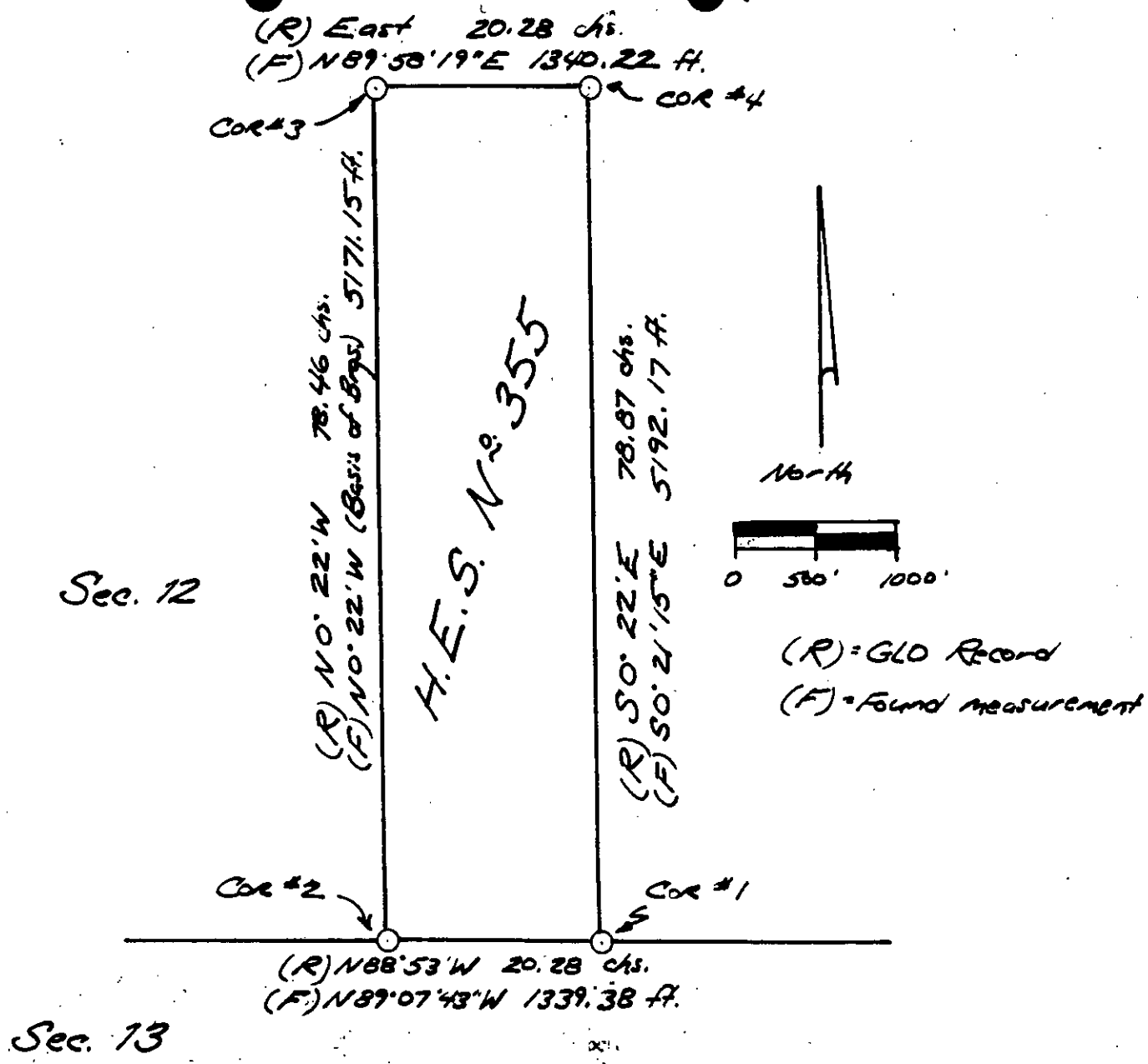
Daniel C. Smiley
Signature of Surveyor & Seal

Date: 12/21/82 Reg. No. 3526 ES
Employer: Flathead National Forest

Office of Clerk and Recorder, County of Lincoln This corner record" was filed for record on the Jan. 20 day of 1983 was noted on the cross-index plat and is assigned page No. 2149, in book No. _____

Janet B.F. Siegel by Betty L. Conces
County Official deputy





Alongside of wooden post

Set an iron post, 3 ft. long, 1 in. diam., 28 ins. in the ground, for the $\frac{1}{4}$ sec. cor. of secs. 12 and 13, with brass cap carked

$\frac{1}{4}$ $\frac{S 12}{S 13}$
1933

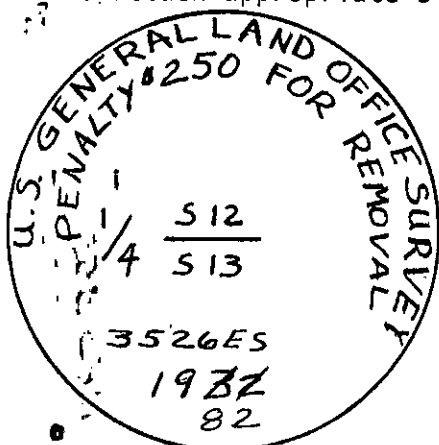
Found: A 6" x 6" x 42" pine post, top decayed and partial scribing visible. We do not find stone with (x). Alongside post we find a G.L.O. 1" diam. pipe with 3" brass cap marked as shown below, from which:

A 12" spruce bears $S3^{\circ}15'E.$, 24.5 ft., live, with scribing overgrown.

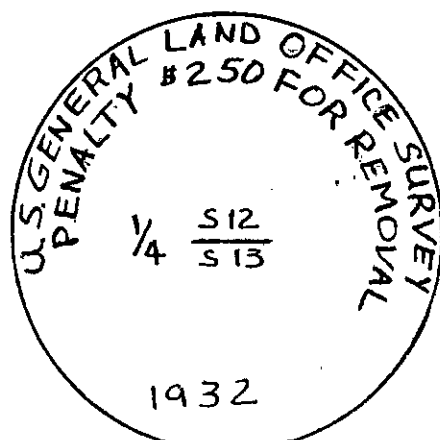
An 18" lodgepole pine bears $S.30^{\circ}W.$, 34.6 ft., "X" chopped into tree at breastheight, scribing chopped out, none visible.

Set: We remove rotting pine post, of which the bottom 34" is in water. We replace the post with G.L.O. monument and establish a new reference monument.

A 10" spruce, bears $N.53^{\circ}W.$, 26.6 ft. scribed; 1 HES 355 $\frac{1}{4}$ S 12 RM.
We remark the G. L. O. monument as shown below.
We attach appropriate signs.



Remarked monument



Found monument