

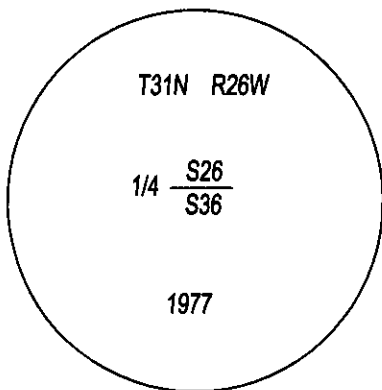
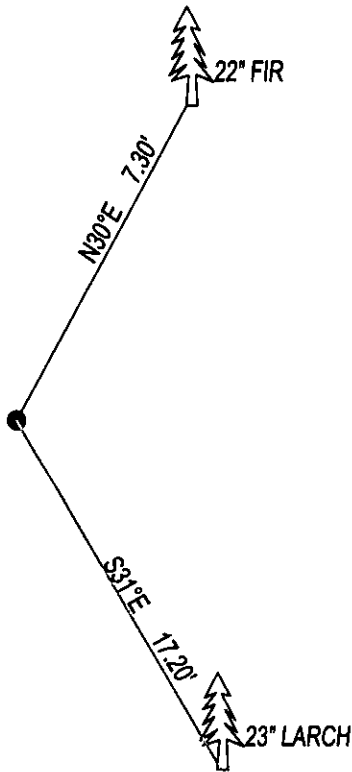
CERTIFIED CORNER RECORDATION

CORNER S1/4 SEC. 26 T. 31N, R. 26W, P.M.M., LINCOLN COUNTY

RECORD B.L.M. 1977: THE 1/4 CORNER FOR SECTIONS 26 MONUMENTED WITH A SANDSTONE 20x12x8", 15 INCHES INTO THE GROUND WITH 1/4 ON NORTH FACE, SET A IRON POST WITH BRASS CAP, FROM WHICH:
 17" FIR BEARS N30°E 11 LKS MARKED 1/4 S BT.
 22" LARCH BEARS S31°E 26 LKS MARKED 1/4 S BT.
 8" PINE BEARS S32°W 37 LKS MARKED X BT.

FOUND: 3 1/4" BRASS CAP STAMPED AS SHOWN, FROM WHICH;
 22" FIR BEARS N30°E 7.30' WITH OVERGROWN SCRIBE.
 23" LARCH BEARS S31°E 17.20' WITH OVERGROWN SCRIBE.

MAINTENANCE: SET 5 FOOT STEEL POSTS 2 FEET NORTH AND 1 FOOT WEST OF CORNER, ATTACHED BT TAG AND PAINTED 6" BAND ON BT.



SKETCH OF CORNER

CERTIFICATION

I, DAN CROFT
 CERTIFY THE INFORMATION SHOWN HEREIN IS TRUE AND CORRECT.

SIGNATURE GROUND PARTY CHIEF

I, MARC J. CARSTENS
 CERTIFY THAT THIS CORNER RECORD CORRECTLY REPRESENTS WORK PERFORMED BY ME OR UNDER MY DIRECTION IN COMPLIANCE WITH THE "CORNER RECORDATION ACT" (70-22-101, ET SEQ., M.C.A.)



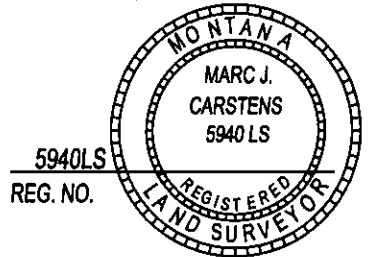
SIGNATURE OF SURVEYOR & SEAL

09-11-14

DATE

CARSTENS SURVEYING

EMPLOYER



5940LS
 REG. NO.

OFFICE OF CLERK AND RECORDER, COUNTY OF LINCOLN

THIS "CORNER RECORD" WAS FILED F 253511 BOOK: CCR CC&R'S PAGE: 12138 Pages: 1

AND IS ASSIGNED PAGE NO. WAS NOT STATE OF MONTANA LINCOLN COUNTY

RECORDED: 09/22/2014 10:20 KOI: CC&R'S

TAMMY D. LAUER CLERK AND RECORDER

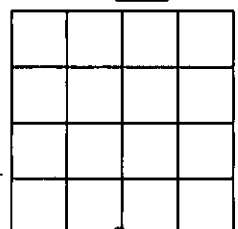
COUNTY OFFICIAL

FEE: \$0.00 BY: Marc J. Carstens Deputy
 FOR: CARSTENS LAND SURVEYING P.O. BOX 1374, POLSON, MONTANA

CROSS INDEX NO. V-19 T. 31N, R. 26W, P.M.M.

ADOPTED JULY 1, 1981, MONTANA BOARD OF PROFESSIONAL ENGINEERS & LAND SURVEYORS

SEC. 26



● CORNER THIS SHEET