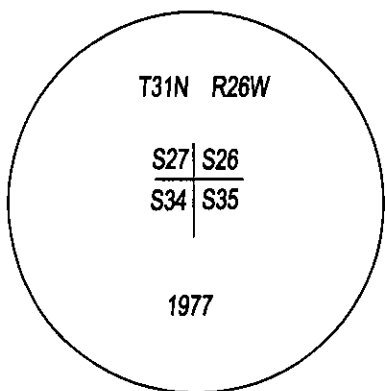
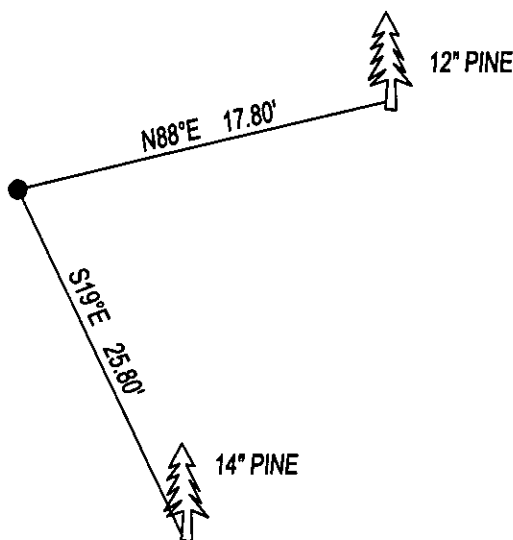


CERTIFIED CORNER RECORDATION

CORNER SW CORNER SEC. 26 T. 31N R. 26W P.M.M., LINCOLN COUNTY

FOUND: 3 1/4' BRASS CAP STAMPED AS SHOWN FROM WHICH;
12" PINE WITH BT TAG BEARS N88°E 17.80' SCRIBED T31N R26W S26 BT.
14" PINE WITH BT TAG BEARS S19°E 25.80' SCRIBED T31N R26W S35 BT.

MAINTENANCE: REMOVED DOWN LOGS AND TREE LIMBS
SET 5 FOOT STEEL POST 1 FOOT EAST OF CORNER.
ATTACHED BT TAG AND PAINTED 6" BAND ON BT.



SKETCH OF CORNER

CERTIFICATION

I, DAN CROFT
CERTIFY THE INFORMATION SHOWN HEREIN IS TRUE AND CORRECT.

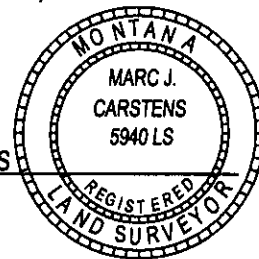
SIGNATURE GROUND PARTY CHIEF

I, MARC J. CARSTENS
CERTIFY THAT THIS CORNER RECORD CORRECTLY REPRESENTS WORK
PERFORMED BY ME OR UNDER MY DIRECTION IN COMPLIANCE WITH THE
"CORNER RECORDATION ACT" (70-22-101, ET SEQ., M.C.A.)

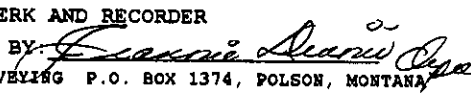

SIGNATURE OF SURVEYOR & SEAL

06-20-13
DATE
CARSTENS SURVEYING
EMPLOYER

5940LS
REG. NO.



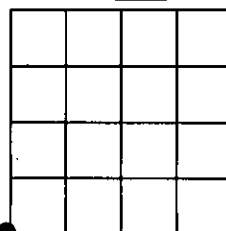
OFFICE OF CLERK AND RECORDER, COUNTY OF LINCOLN

THIS "CORNER RECORD" WAS FILED FOR 253510 BOOK: CCR CC&R'S PAGE: 12137 Pages: 1
AND IS ASSIGNED PAGE NO. WAS NOTED STATE OF MONTANA LINCOLN COUNTY
RECORDED: 09/22/2014 10:15 KOI: CC&R'S
TAMMY D. LAUER CLERK AND RECORDER
FEE: \$0.00 BY: 
FOR: CARSTENS LAND SURVEYING P.O. BOX 1374, POLSON, MONTANA
CROSS INDEX NO. V-17 T. 31N R. 26W P.M.M.

COUNTY OFFICIAL

ADOPTED JULY 1, 1981, MONTANA BOARD OF PROFESSIONAL ENGINEERS & LAND SURVEYORS

SEC. 26



● CORNER THIS SHEET