

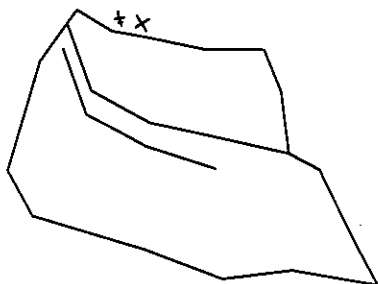
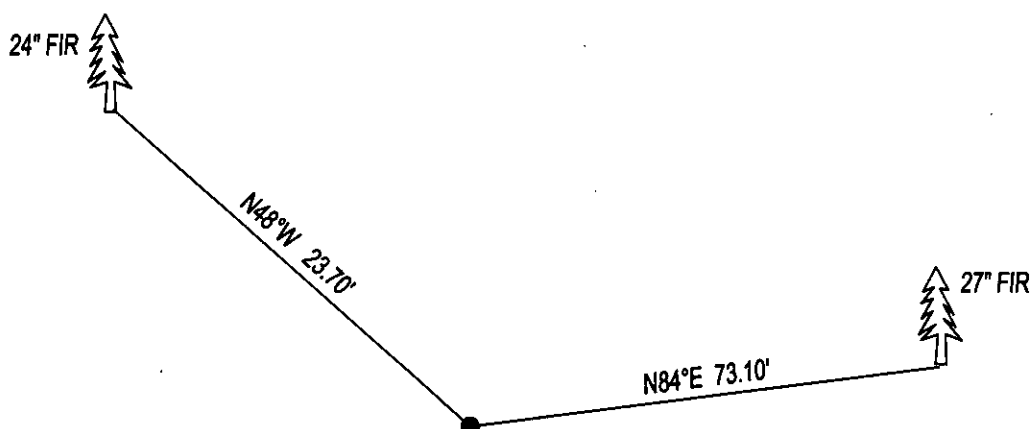
CERTIFIED CORNER RECORDATION

CORNER E1/4 SEC. 26 T. 31N R. 26W P.M.M., LINCOLN COUNTY

RECORD : ON A CLIFF OF ROCK 14' HIGH, MARKED A "X" AND 1/4 WEST OF CROSS, FROM WHICH;
10" FIR BEARS N44°W 23.76' MARKED 1/4 S BT .
14" FIR BEARS N83 1/2°E 73.26' MARKED 1/4 S BT .

FOUND: X ON EDGE OF CLIFF WITH 1/4 WEST OF X, FROM WHICH;
24" FIR BEARS N48°W 23.70' WITH OVERGROWN SCRIBE .
27" FIR BEARS N84°E 73.10' WITH OVERGROWN SCRIBE .

MAINTENANCE: PAINTED A RED CIRCLE AROUND X.
ATTACHED BT TAG AND PAINTED 6" BAND ON BT.



SKETCH OF CORNER

CERTIFICATION

I, DAN CROFT

CERTIFY THE INFORMATION SHOWN HEREIN IS TRUE AND CORRECT.

SIGNATURE GROUND PARTY CHIEF

I, MARC J. CARSTENS

CERTIFY THAT THIS CORNER RECORD CORRECTLY REPRESENTS WORK
PERFORMED BY ME OR UNDER MY DIRECTION IN COMPLIANCE WITH THE
"CORNER RECORDATION ACT" (70-22-101, ET SEQ., M.C.A.)

SIGNATURE OF SURVEYOR & SEAL

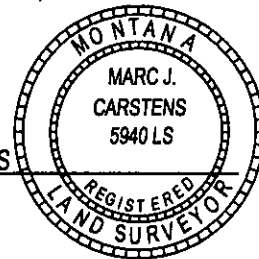
09-11-14

DATE

CARSTENS SURVEYING

EMPLOYER

5940LS
REG. NO.



OFFICE OF CLERK AND RECORDER, COUNTY OF LINCOLN

THIS "CORNER RECORD" WAS FILED FOR 253507 BOOK: CCR CC&R'S PAGE: 12134 Pages: 1

AND IS ASSIGNED PAGE NO. STATE OF MONTANA LINCOLN COUNTY

RECORDED: 09/22/2014 10:00 KOI: CC&R'S

TAMMY D. LAUER CLERK AND RECORDER

FEE: \$0.00

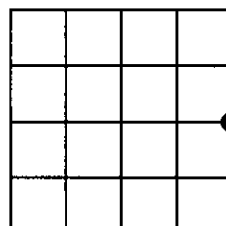
BY:

FOR: CARSTENS LAND SURVEYING P.O. BOX 1374, POLSON, MONTANA

CROSS INDEX NO. T-21 T. 31N R. 26W P.M.M.

ADOPTED JULY 1, 1981, MONTANA BOARD OF PROFESSIONAL ENGINEERS & LAND SURVEYORS

SEC. 26



● CORNER THIS SHEET