

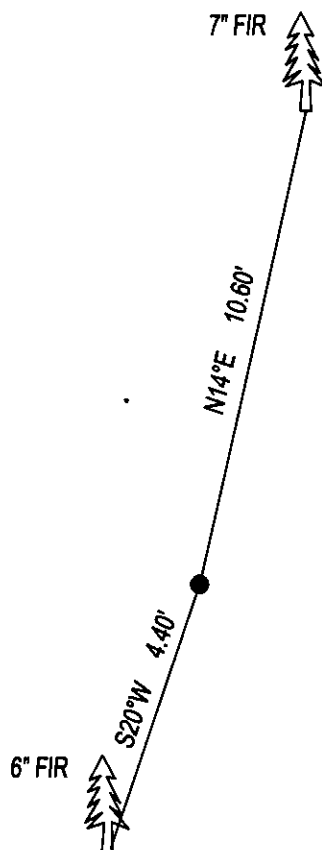
CERTIFIED CORNER RECORDATION

CORNER C1/4 SEC. 26 T. 31N, R. 26W, P.M.M., LINCOLN COUNTY

RECORD: NONE

FOUND: NOTHING

SET: 5/8"x24" REBAR WITH YPC STAMPED AS SHOWN, FROM WHICH;
7" FIR BEARS N14°E 10.60'.
6" FIR BEARS S20°W 4.40'.
SET 5' STEEL POSTS 1 FOOT NORTH AND 2 FEET WEST OF CORNER.
ATTACHED BT TAG AND PAINTED 6" BAND ON BT.



SKETCH OF CORNER

CERTIFICATION

I, DAN CROFT
CERTIFY THE INFORMATION SHOWN HEREIN IS TRUE AND CORRECT.

SIGNATURE GROUND PARTY CHIEF

I, MARC J. CARSTENS
CERTIFY THAT THIS CORNER RECORD CORRECTLY REPRESENTS WORK
PERFORMED BY ME OR UNDER MY DIRECTION IN COMPLIANCE WITH THE
"CORNER RECORDATION ACT" (70-22-101, ET SEQ., M.C.A.)

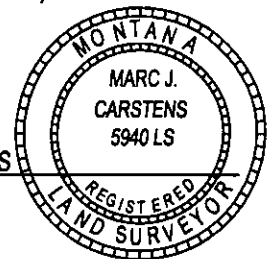

SIGNATURE OF SURVEYOR & SEAL

09-12-14

DATE

CARSTENS SURVEYING
EMPLOYER

5940LS
REG. NO.



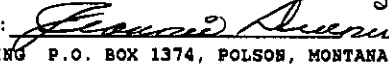
OFFICE OF CLERK AND RECORDER, COUNTY OF LINCOLN

THIS "CORNER RECORD" WAS FILED FOR REC 253506 BOOK: CCR CC&R'S PAGE: 12133 Pages: 1

AND IS ASSIGNED PAGE NO. _____ IN B(STATE OF MONTANA LINCOLN COUNTY

RECORDED: 09/22/2014 9:55 KOI: CC&R'S

TAMMY D. LAUER CLERK AND RECORDER

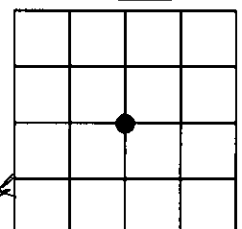
FEE: \$0.00 BY: 
FOR: CARSTENS LAND SURVEYING P.O. BOX 1374, POLSON, MONTANA

COUNTY OFFICIAL

CROSS INDEX NO. T-19 T. 31N R. 26W P.M.M.

ADOPTED JULY 1, 1981, MONTANA BOARD OF PROFESSIONAL ENGINEERS & LAND SURVEYORS

SEC. 26



● CORNER THIS SHEET