

CERTIFIED CORNER RECORDATION

Corner N-E Sec. Cor. S 36 T. 31 N., R. 26 W., P.M.M. Lincoln County

Record :

1893 original GLO notes by James S. Keerl.

"Set a limestone 24 x 8 x 5 ins., 18 ins. in the ground, marked with 1 notch on S. and 5 notches on N. edge, from which:

A fir, 12 ins. diam., bears N. 76°30' E., 6 lks. dist., marked T31N R25W S30 BT.

A fir, 3 ins. diam., bears S. 51°30' E., 43 lks. dist., marked T31N R25W S31 BT.

A fir, 38 ins. diam., bears S. 81° W., 49 lks. dist., marked T31N R26W S36 BT.

A fir, 10 ins. diam., bears N. 45° W., 68 lks. dist., marked T31N R26W S25 BT."

Found Evidence :

Found original stone in place.

Found original Bearing Trees, from which:

A fir bears N. 45° W., 68.0 lks. dist., for Sec. 25. Overgrown face.

A fir bears S. 76°30' W., 6.0 lks. dist., for Sec. 36. Scribing Legible. Tree broke above face blaze.

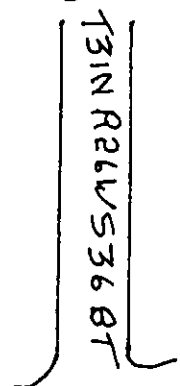
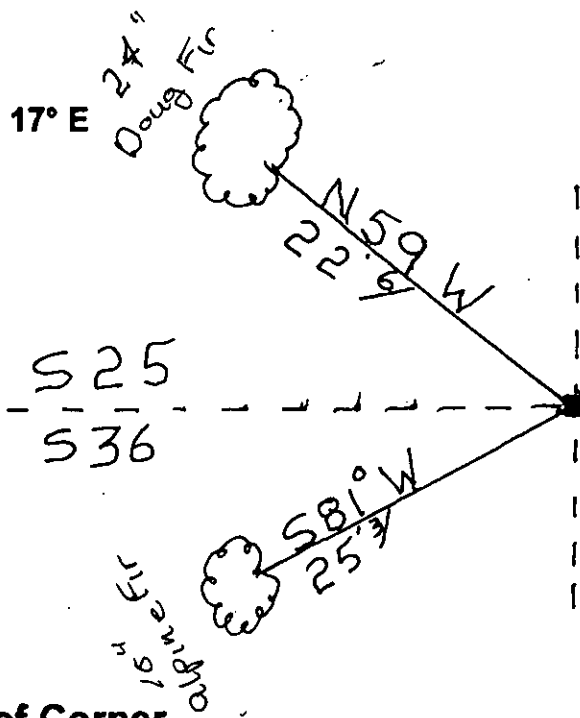
Perpetuation :

Established one (1) new Bearing Tree, from which:

An alpine fir, 10 ins. diam., bears S. 81° W., 25.3 ft. dist., for Sec. 36.

Painted 6 in. wide red bands around Bearing Tree with Bearing Tree and warning signs attached.

Declination: 17° E



CERTIFICATION

I, Ricky E. Shaver

certify the information shown herein is true and correct

Ricky E. Shaver
Signature of Ground Party Chief

I, Ken E. Davis

certify that this Corner Record correctly represents work performed by me or under my direction in compliance with the "Corner Recordation Act"

Kenneth E. Davis
Signature of Surveyor & Seal

Date: 2/28/2000 Reg. No. 4975-5

Employer: Davis Surveying, Inc.

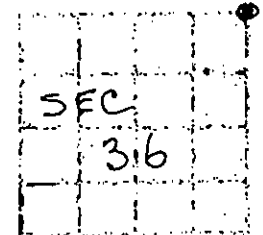
Sketch of Corner

Section

Office of Clerk and Recorder, County of Lincoln

This "corner record" was filed for record on 2/28/2000 10493
was noted on the cross-index plat and is assigned page No. 10493

In book No. Coral M. Cummins B, PEB
County Official



Cross Index No. N-E Sec. Cor. S 36 T. 31 N., R. 26 W., PMM

● THIS CORNER