

CERTIFIED CORNER RECORDATION

Corner E 1/4 S 36 T. 31 N., R. 26 W., P.M.M. Lincoln County

Record :

1893 original GLO notes by James S. Keerl.

Set a limestone 12 x 10 x 7 ins., 8 ins. in the ground, for 1/4 Sec. 36, marked 1/4 on W. face, from which:

A tamarack 24 ins. diam. bears N 88° E, 13 lks. dist. marked 1/4 S B T.
A fir 10 inch dia. bears S88° 40W 14 lks. dist.

Found Evidence :

Found original stone in place.
Both original Bearing Trees are down.

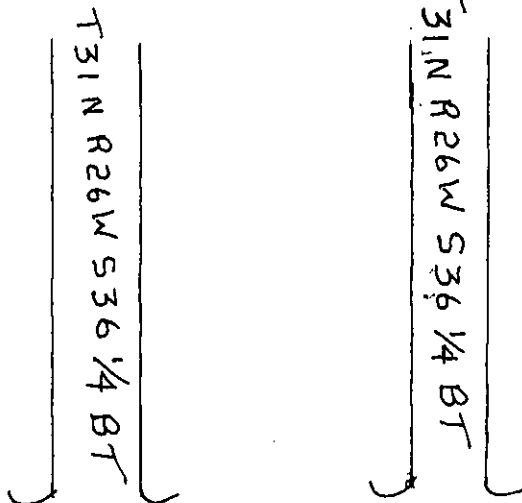
Perpetuation :

Established the following new Bearing Trees:

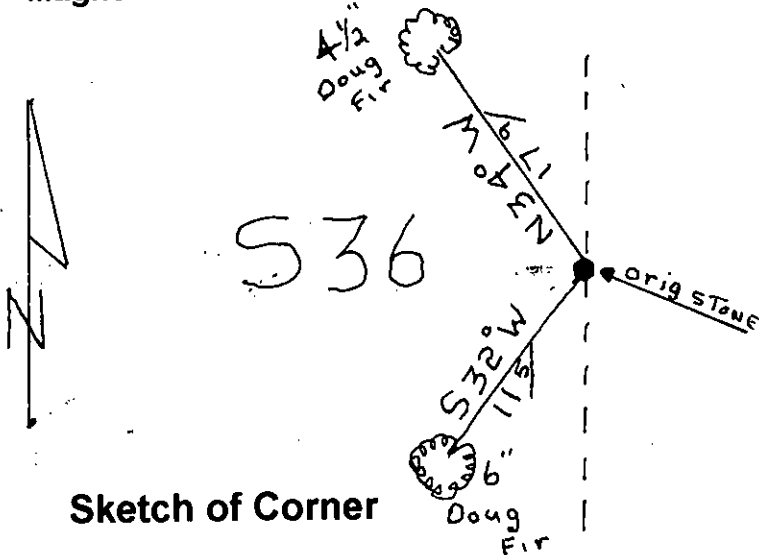
A red fir, 4 1/2 ins. DBH, bears N. 34° W., 17.9 ft. dist., scribed T31N R26W S36 1/4 BT.

A red fir, 6 ins. DBH, bears S. 32° W., 11.5 ft. dist., scribed T31N R26W S36 1/4 BT.

Painted 6 in. wide red bands around both Bearing Trees and attached Bearing Tree and warning signs.



Magnetic Declination: 17° E.



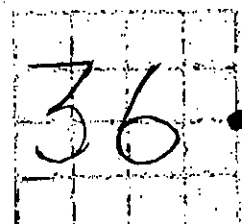
Sketch of Corner

CERTIFICATION

I, George Clark
certify the information shown herein is true and correct
George Clark
Signature of Ground Party Chief
I, Kenneth E. Davis
certify that this Corner Record correctly represents work performed by
me or under my direction in compliance with the "Corner Recordation
Act"
KENNETH E. DAVIS
1022-101, et seq., M.C.A.
4975-S
Signature of Surveyor & Seal
Date 2/28/2000 Reg. No. 4975-S
Employer Davis Surveying, Inc.

Office of Clerk and Recorder, County of Lincoln
This "corner record" was filed for record on 2/28/2000
was noted on the cross-index plat and is assigned page No. 10422
in book No. Coral M. Cumming By DIB
County Official

Section



Cross Index No. E 1/4 S 36 T. 31 N., R. 26 W., PMM

• THIS CORNER