

CERTIFIED CORNER RECORDATION

Corner S 1/4 Sec. 36 T. 31 N., R. 26 W., P.M.M. Lincoln County

Record :

1893 original GLO notes by James S. Keerl.
A limestone 14 x 8 x 12 ins. above ground.
A fir, 16 ins. diam., bears N. 13 1/2 degrees W., 97 lks, dist., marked 1/4 S 36 B T

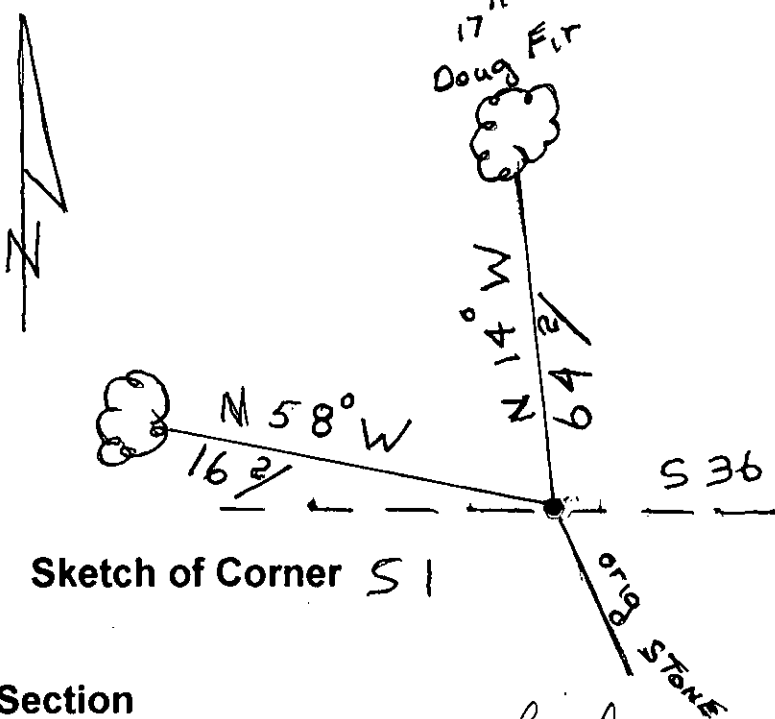
Found Evidence :

Found original stone marked 1/4 on West face.
Found original Douglas Fir Bearing Tree which bears N. 14 degrees W., 64.2 ft. dist., for Sec. 36.

Perpetuation :

Original douglas fir, 17 ins. diam., bears N. 14 degrees W., 64.2 ft. dist., for Sect. 36.
Established the following new Bearing Tree:
A douglas fir, 11 ins. diam., bears N. 58 degrees W., 16.2 ft. dist., for Sec. 36.
Painted 6 in. wide red bands around both Bearing Trees and attached Bearing Tree and warning signs.

Magnetic Declination: 17 degrees E.



Vertical handwritten text: T31 N R26 W S36 1/4 BT

CERTIFICATION

I, Ricky E. Shaver certify the information shown herein is true and correct. Signature of Ground Party Chief, Kenneth E. Davis

Professional seal and signature of Kenneth E. Davis, Surveying, Inc. Includes text: 'I certify that this Corner Record correctly represents work performed by me or under my direction in compliance with the "Corner Recordation Act"'. Seal number: 4975-S.

Section

Office of Clerk and Recorder, County of Lincoln. This "corner record" was filed for record on 2/29/2000 was noted on the cross-index plat and is assigned page No. 10414 in book No. Coral M. Cumming By P/B County Official

