

CERTIFIED CORNER RECORDATION

Corner Northeast 1/16 Cor. Sec 24 T. 31 N., R. 26 W. P.M.M. Lincoln County

Record A thorough search of the records of the Lincoln County Clerk and Recorder's Office yielded no record of this corner having been previously set in accordance with the BLM Manual of Surveying Instructions.

Set At the position for the Northeast 1/16 corner of sections 24, an aluminum rod, 3/4 inch in diam. by 48 inches long, 45 inches in the ground, with a Forest Service aluminum cap, 3 1/4 inches in diam. marked as shown below.

From which:

A fir, 10" d.b.h., bears S. 47° E., 17.5 ft. distant, blazed and scribed "NE1/16 S24 BT".

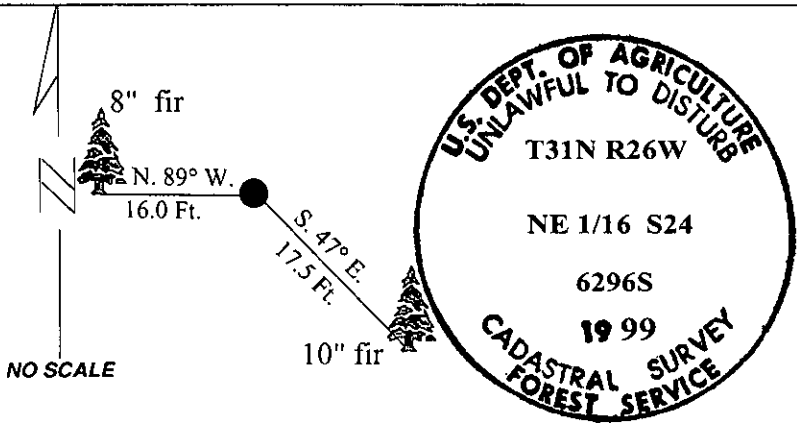
A fir, 8" d.b.h., bears N. 89° W., 16.0 ft. distant, blazed and scribed "X BT".

A fir, 7" d.b.h., with a location poster attached bears N. 70° E., 6.8 ft. distant.

Measurements were made with a hand compass (declination 18° E.) and a steel tape to the center of the root crowns of all trees. Distances are horizontal.

We attach "BEARING TREE" and "LAND SURVEY MONUMENT" signs to the bearing trees.

National Forest boundary posts are placed 3 ft. north and 3 ft. east of the corner.



SKETCH OF CORNER

CERTIFICATION

I, Marc Burkhart, Ron Krueger
certify the information shown herein is true and correct.

Marc Burkhart Ron Krueger
Signature Ground Party Chief

I, Linda S. Smith
certify that this Corner Record correctly represents work performed by me or under my direction in compliance with the "Corner Recordation Act" (70-22-101, et seq., M.C.A.)

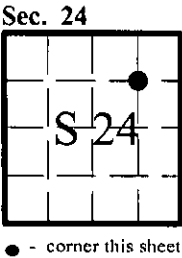
Linda S. Smith
Signature Registered Professional Land Surveyor

Date: 1/2000

Reg. No.: 6296S

Employer: U.S. FOREST SERVICE

Office of Clerk and Recorder, County of Lincoln. This "corner record" was filed for record on 1-24-2000 was noted on the cross-index plat and is assigned page No. _____, in book No. 10406 Coral M. Cumming by DEB
County Official



• - corner this sheet