

- INSTRUCTIONS
1. Original and/or supplement record used to evaluate the corner position.
 2. Description of existing monument found, note discrepancies in the record, state method of reestablishing lost or obliterated corners.
 3. Description of monument and accessories set to perpetuate the corner position.
 4. Sketch or corner, show all pertinent data which can best be shown in a sketch example, corner marking, topography ties, position of accessories, etc.
 5. Certification must be signed and sealed by Registered Land Surveyor in State of Montana.
 6. Fill in Cross Index & Section Diagram at bottom of sheet.

CERTIFIED CORNER RECORDATION

Corner Sec. Cor. 18, 19 T. 31 N. R. 25 W. P.M.M. Flathead County
& Lincoln County

Record: G.L.O. Survey by Lyman, Parker, and Warner, 1932.

"Set an iron post, 3 ft long, 2 ins. diam., 28 ins. in the ground, for cor. of secs. 18 and 19, with brass cap marked:

T 31 N	T 31 N
R 26 W	S18
S13	S19
	R 25 W

1932

from which:

A fir, 8 ins. diam., bears N. $72-3/4^{\circ}$ E., 18 lks. dist., marked T. 31 N., R. 25 W., S. 18 BT.

A spruce, 12 ins. diam., bears S. $52\frac{1}{2}^{\circ}$ E., 20 lks. dist., marked T. 31 N., R. 25 W., S. 19 BT."

Found: A 2 ins. diam. iron pipe, 10 ins. above ground with a $2\frac{1}{2}$ " brass cap marked as shown above. From the cap:

An alpine fir snag, 12 ins. diam., $3\frac{1}{2}$ ft. tall, bears N. 69° E., 11.5 ft. distant with the scribing "T. 31 N., R. 25 W., S. 18 BT" visible.

A spruce snag, 21 ins. diam., 3 ft. tall bears S. 50° E., 12.6 ft. distant, with the scribing "T. 31 N., R. 25 W., S. 19 BT" visible.

Discussion: We accept this pipe as the true corner of sections 18 and 19.

New R.M.'s: We establish new reference monuments as follows:

From the cap

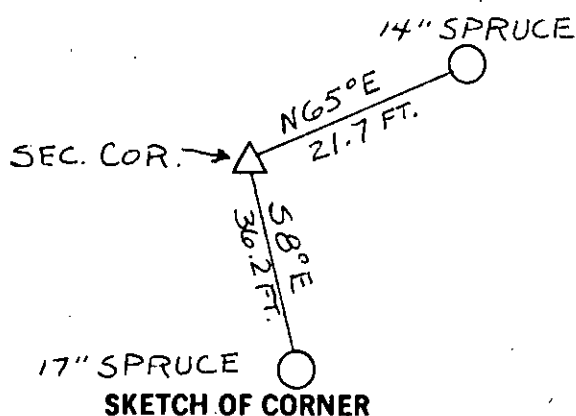
A spruce, 14 ins. diam., bears N. 65° E., 21.7 ft. distant, blazed and scribed "T. 31 N., R. 25 W., S. 18 RM."

A spruce, 17 ins. diam., bears S. 8° E., 36.2 ft. distant, blazed and scribed "T. 31 N., R. 25 W., S. 19 RM."

A spruce, 6 ins. diam., with location poster attached, bears N. 42° W., 16.2 ft. distant.

We attached "BT" and "Attention" signs to the new R.M.'s.

Bearings were determined using a Silva compass with declination set at 20° E.



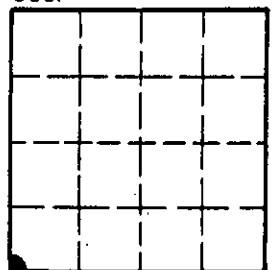
CERTIFICATION

I, James L. Carter
certify the information shown herein is true and correct.
James L. Carter
Signature Ground Party Chief
I, Daniel C. Smiley
certify that this Corner Record correctly represents work performed by me or under my direction in compliance with the "Corner Recordation Act" (70-22-101, et seq., M.D.A.)
Daniel C. Smiley
Signature of Surveyor & Seal
Date: 3/11/83 Reg. No. 3526 ES
Employer: Flathead National Forest

Office of Clerk and Recorder, County of LINCOLN. This "corner record" was filed for record on the MARCH 15 day of 1983 was noted on the cross-index plat and is assigned page No. 2192, in book No. _____
Janet BF Siegel by Betty L. Conner
County Official deputy

Cross Index No. N - 1 31 N., 25 W.,
(N - 25 T. 31 N., R. 26 W.) P.M.M.

Sec. 18



• corner this sheet