

## INSTRUCTIONS

1. Original and/or subsequent record used to evaluate the corner position.
2. Description of evidence found, note discrepancies in the record, state method of establishing lost or obliterated corners.
3. Description of monument and accessories set to perpetuate the corner position.
4. Sketch of corner, show all pertinent data which can best be shown in a sketch example, corner marking, topography ties, position of accessories, etc.
5. Certification must be signed and sealed by Land Surveyor registered in the State of Montana.
6. Fill in Cross Index & Section Diagram at bottom of sheet.

## CERTIFIED CORNER RECORDATION

Corner W 1/4 cor. Sec. 6 T. 30 N. R. 33 W. P.M.M. Lincoln County

- I. 1893 G.L.O. original record by Daniel P. Mumbrue: "Set a post 3 ft. long, 3 ins. square, 24 ins. in the ground for 1/4 Sec. Cor., marked 1/4 S. on W. face; from which

A tamarack, 20 ins. diam., bears N 13 1/2° E, 35 lks. distance, marked 1/4 S B.T.

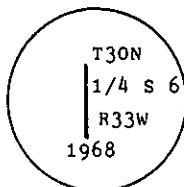
A tamarack, 18 ins. diam., bears S 40 3/4° W, 11 lks. distance, marked 1/4 S B.T."

1910 Resurvey by Lewellyn D. Lyman and Royston C. Durnford: "The old 1/4 sec. cor. is in poor condition, therefore I set a granite stone, 16 X 10 X 6 ins., 11 ins. in the ground for 1/4 sec. cor. of sec. 6 only, marked 1/4 on the E. face, the cor. is witnessed as described by the surveyor general.

1968 B.L.M. Remonumentation record by Woodrow E. Damm et al: "The 1/4 sec. cor. of sec. 6, on the W. bdy. of the Tp., monumented with a granite stone, 16 X 10 X 6 ins., firmly set, mkd. 1/4 on the E. face, and witnessed by the remains of the original NE bearing tree.

At the corner point

Set an iron post, 30 ins. long, 2 1/2 ins. diam., 24 ins. in the ground, with brass cap mkd.



from which the original bearing tree:

A stump, 24 ins. diam., bears N 13 1/2° E, 35 lks. dist., mkd. 1/4 S BT.(Record)

The new bearing trees:

A larch, 6 ins. diam., bears N 45° E, 17 lks. dist., mkd. 1/4 S6 BT.

A larch, 6 ins. diam., bears S 62° E, 29 lks. dist., mkd. X BT.

Bury the original stone alongside the iron post.

- II. Found a 2 1/2 ins. diam. iron pipe, 6 ins. above the ground, firmly set with 3 1/4 ins. diam., B.L.M. brass cap, marked as shown above, from which

A larch, 9 ins. diam., bears N 45° E, 12.1 ft. (18.3 lks.) dist., healed face. (Rec. 17 lks.)

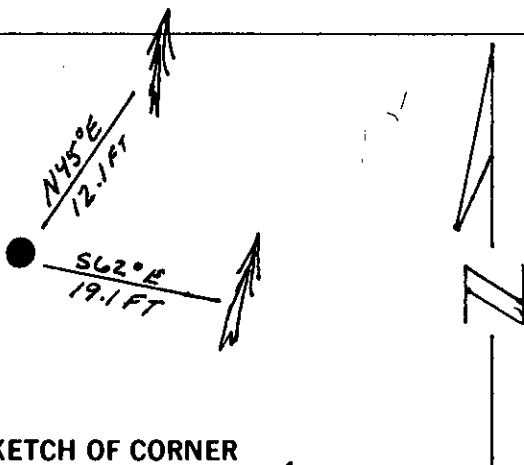
A larch, 6 ins. diam., bears S 62° E, 19.2 ft. (29 lks.) dist., healed face.

- III. Painted red bands around the bearing trees and attached Land Survey Monument and Bearing Tree signs.

No guard post established.

Magnetic Declination: 20° East

## SKETCH OF CORNER



## CERTIFICATION

Kenneth R. Kern

I, \_\_\_\_\_  
certify the information shown herein is true and correct.

Signature Ground Party Chief

Alvah F. Hughes

I, \_\_\_\_\_  
certify that this Corner Record correctly represents work performed by me or under my direction in compliance with the "Corner Recordation Act" (70-22-101, et seq., M.C.A.)

Signature of Surveyor & Seal

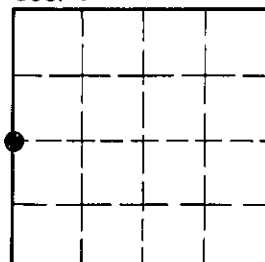
Date: 12/16/93 Reg. No. 7322LS

Employer: U.S. FOREST SERVICE

Office of Clerk and Recorder, County of Lincoln. This "corner record" was filed for record on Jan 12, 1994 was noted on the cross-index plat and is assigned page No. 6080, in book No. \_\_\_\_\_

Cross Index No. C-1 T. 30 N R. 33 W P.M.M.

Sec. 6



• - corner this sheet