

INSTRUCTIONS

1. Original and/or subsequent record used to evaluate the corner position.
2. Description of evidence found, note discrepancies in the record, state method of establishing lost or obliterated corners.
3. Description of monument and accessories set to perpetuate the corner position.
4. Sketch of corner, show all pertinent data which can best be shown in a sketch example, corner marking, topography ties, position of accessories, etc.
5. Certification must be signed and sealed by Land Surveyor registered in the State of Montana.
6. Fill in Cross Index & Section Diagram at bottom of sheet.

CERTIFIED CORNER RECORDATION

Corner 2 of MS 7655 T. 30 N. R. 34 W. Lincoln County

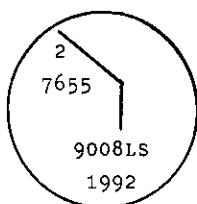
I. 1905 MS original record by E.P. Harrison: "A post, 5x5 ins., 5 ft. long, set 2 ft. deep, scribed 2-7655. Raised a mound of earth around post.

- A blazed fir tree, 20 ins. in diam., scribed BT 2-7655, bears N80° E, 10 ft.
- A blazed fir tree, 14 ins. in diam., scribed BT 2-7655, bears N10° W, 14 ft."

II. No evidence of the original corner monument was found.

- A rotten fir stump, 20 ins. diam., with a face and faint scribing. (Original NE BT)
- A larch, 21 ins. diam., mkd. "T2 765" (No record)

III. At the position determined by record bearing-distance from found original BT, set a 3/4 in. diam., 30 ins. long, alum. rod 26 ins. in the ground with alum. cap mkd. as shown.

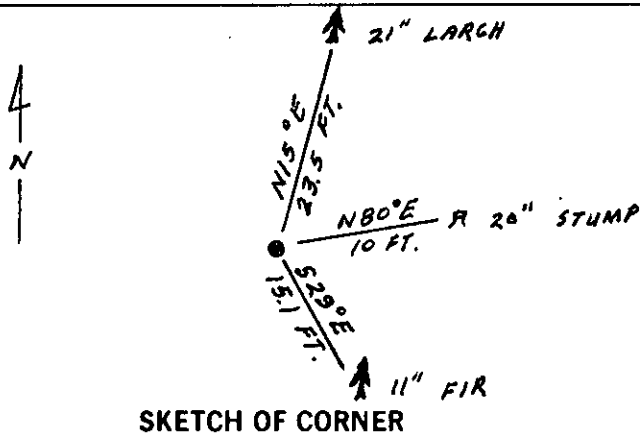


From which:

- A larch, 21 ins. diam., bears N15° E, 23.5 ft. dist., mkd. "T2 765" (Found unrecorded BT)
- A fir, 11 ins. diam., bears S29° E, 15.1 ft. dist., mkd. 2 7655 BT. (New BT)

Painted red bands around the bearing trees and attached "Land Survey Monument" and "Bearing Tree" signs.

Set a galvanized steel guard post with "Land Survey Marker" and "Property Boundary" decals, N59° W, 3 ft. Magnetic declination: 20° East



SKETCH OF CORNER

CERTIFICATION

I, Kevin A. Todd
 certify the information shown herein is true and correct.
Kevin A. Todd
 Signature Ground Party Chief

I, Ronald A. Pearson
 certify that this Corner Record correctly represents work performed by me or under my direction in compliance with the "Corner Recordation Act" (70-22-101, et seq., M.C.A.)
Ronald A. Pearson
 Signature of Surveyor & Seal

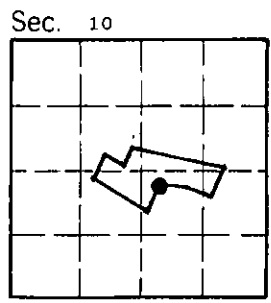
Date: 11/23/92 Reg. No. 9008 LS
 Employer: U. S. FOREST SERVICE

Office of Clerk and Recorder, County of Lincoln. This "corner record" was filed for record on 12-15-92 was noted on the cross-index plat and is assigned page No. 5174, in book No. _____

Coral M. Cummings by B.B.
 County Official

2 MS 7655 30 N 34 W

Cross Index No. _____ T. _____ R. _____ PMM



• - corner this sheet