

INSTRUCTIONS

1. Original and/or subsequent record used to evaluate the corner position.
2. Description of evidence found, note discrepancies in the record, state method of establishing lost or obliterated corners.
3. Description of monument and accessories set to perpetuate the corner position.
4. Sketch of corner, show all pertinent data which can best be shown in a sketch example, corner marking, topography ties, position of accessories, etc.
5. Certification must be signed and sealed by Land Surveyor registered in the State of Montana.
6. Fill in Cross Index & Section Diagram at bottom of sheet.

**CERTIFIED CORNER RECORDATION**

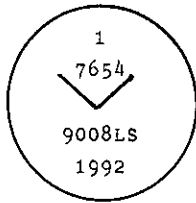
Corner 1 of MS 7654 T. 30 N. R. 34 W. P.M.M. Lincoln County

I. 1905 MS original record by E.P. Harrison: "A post, 5x5 ins., 5 ft. long, 2 ft. deep, scribed 1-7654. Raised a mound of stone around post.

- A blazed fir tree, 20 ins. in diam., scribed BT 1-7654, bears N69°10'E, 55 ft.
- A blazed fir tree, 24 ins. in diam., scribed BT 1-7654, bears S3°W, 30 ft.

II. No evidence of the original corner was found.

III. At the calculated position, (See certificate of survey filed in Lincoln County courthouse) set a 3/4 in. diam., 30 ins. long, alum. rod 24 ins. in the ground with alum. cap mkd. as shown.

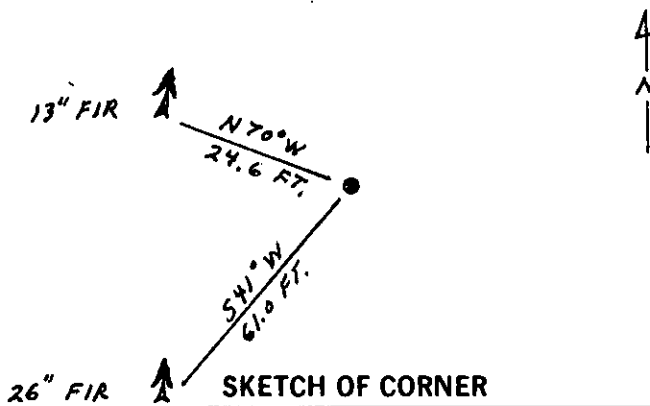
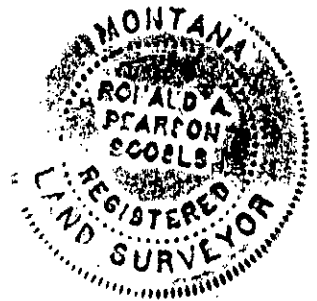


From which:

- A fir, 26 ins. diam., bears S41°W, 61.0 ft. dist., mkd. 1 7654 BT.
- A fir, 13 ins. diam., bears N70°W, 24.6 ft. dist., mkd. 1 7654 BT.

Painted red bands around the bearing trees and attached "Land Survey Monument" and "Bearing Tree" signs.

Set a galvanized steel guard post with "Land Survey Marker" and "Property Boundary" decals, N32°E, 3 ft. Magnetic declination: 20° East



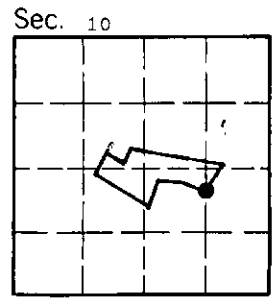
CERTIFICATION

I, Kevin A. Todd  
certify the information shown herein is true and correct.  
Kevin A. Todd  
Signature Ground Party Chief

I, Ronald A. Pearson  
certify that this Corner Record correctly represents work performed by me or under my direction in compliance with the "Corner Recordation Act" (70-22-101, et seq., M.C.A.)  
Ronald A. Pearson  
Signature of Surveyor & Seal

Date: 11/23/92 Reg. No. 9008 LS  
Employer: U.S. FOREST SERVICE

Office of Clerk and Recorder, County of Lincoln. This "corner record" was filed for record on 12-15-92 was noted on the cross-index plat and is assigned page No. 5171, in book No. \_\_\_\_\_  
Coral M. Cummings by TCB  
County Official



1 MS 7654 30 N 34 W  
Cross Index No. \_\_\_\_\_ T. \_\_\_\_\_ R. \_\_\_\_\_ PMM