

INSTRUCTIONS

1. Original and/or subsequent record used to evaluate the corner position.
2. Description of evidence found, note discrepancies in the record, state method of establishing lost or obliterated corners.
3. Description of monument and accessories set to perpetuate the corner position.
4. Sketch of corner, show all pertinent data which can best be shown in a sketch example, corner marking, topography ties, position of accessories, etc.
5. Certification must be signed and sealed by Land Surveyor registered in the State of Montana.
6. Fill in Cross Index & Section Diagram at bottom of sheet.

CERTIFIED CORNER RECORDATION

Corner 2 of MISSOULA MS 10337A T. 30 N. R. 34 W. Lincoln County

I. 1921 MS original record by James L. Sinclair: "A fir post 5 ft. long, 4 ins. square, set 2 ft. in the ground with a mound of earth and stone, scribed M 2-10337A."

II. A mound of stone, 3 ft. base, 1 ft. high, with rotten remains of a 4x5 in. post.

III. At the position of the original post hole, set a 3/4 in. diam., 30 ins. long, alum. rod 24 ins. in the ground with alum. cap mkd. as shown.



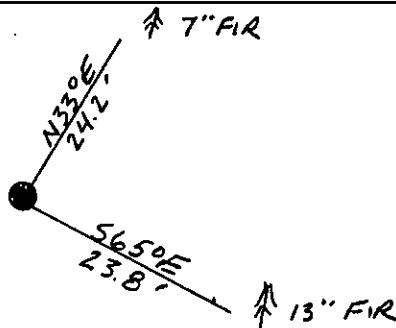
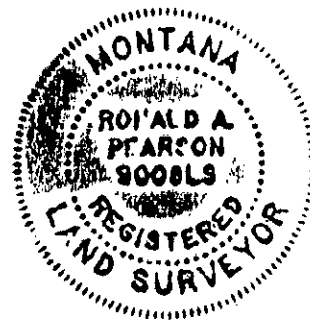
From which:

A fir, 7 ins. diam., bears N33° E, 24.2 ft. dist., mkd. M2 MS10337A BT.

A fir, 13 ins. diam., bears S65° E, 23.8 ft. dist., mkd. M2 MS10337A BT.

Painted red bands around the bearing trees and attached "Land Survey Monument" and "Bearing Tree" signs.

Set a galvanized steel guard post with "Land Survey Marker" and "Property Boundary" decals, S54° E, 3 ft. Magnetic declination: 20° East



SKETCH OF CORNER

CERTIFICATION

I, Kevin A. Todd
certify the information shown herein is true and correct.
Kevin A. Todd
Signature Ground Party Chief

I, Ronald A. Pearson
certify that this Corner Record correctly represents work performed by me or under my direction in compliance with the "Corner Recordation Act" (70-22-101, et seq., M.C.A.)
Ronald A. Pearson
Signature of Surveyor & Seal

Date: 11/23/92 Reg. No. 9008 LS

Employer: U.S. FOREST SERVICE

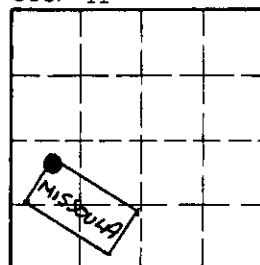
Office of Clerk and Recorder, County of Lincoln. This "corner record" was filed for record on 12-15-92 was noted on the cross-index plat and is assigned page No. 5169, in book No. Coral M. Cummings by BFB

County Official

M2 MS 10337A 30 N 34 W

Cross Index No. _____ T. _____ R. _____ PMM

Sec. 11



• - corner this sheet