

**INSTRUCTIONS**

1. Original and/or subsequent record used to evaluate the corner position.
2. Description of evidence found, note discrepancies in the record, state method of establishing lost or obliterated corners.
3. Description of monument and accessories set to perpetuate the corner position.
4. Sketch of corner, show all pertinent data which can best be shown in a sketch example, corner marking, topography ties, position of accessories, etc.
5. Certification must be signed and sealed by Land Surveyor registered in the State of Montana.
6. Fill in Cross Index & Section Diagram at bottom of sheet.

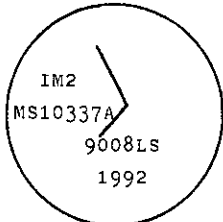
**CERTIFIED CORNER RECORDATION**

Corner 2 of IRON MASK MS 10337A T. 30 N. R. 34 W. Lincoln County

I. 1921 MS original record by James L. Sinclair: "A fir post 5 ft. long, 4 ins. square, set 2 ft. in the ground with a mound of earth and stone, scribed I, 2-10337A."

II. No evidence of the original corner was found.

III. At the calculated position, (See certificate of survey filed in Lincoln County courthouse) set a 3/4 in. diam., 30 ins. long, alum. rod 24 ins. in the ground with alum. cap mkd. as shown.

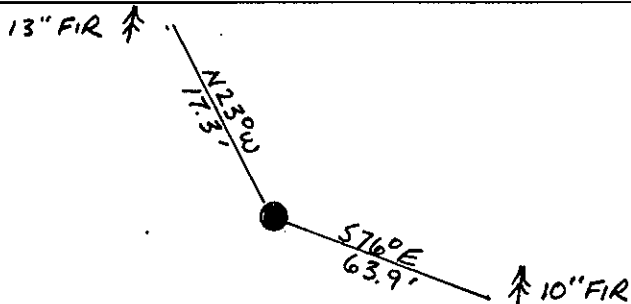
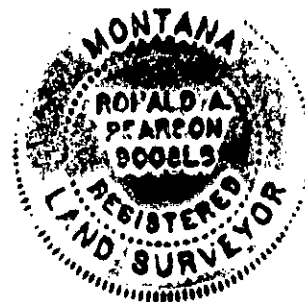


From which:

- A fir, 10 ins. diam., bears S76° E, 63.9 ft. dist., mkd. IM2 MS10337A BT.
- A fir, 13 ins. diam., bears N23° W, 17.3 ft. dist., mkd. IM2 MS10337A BT.

Painted red bands around the bearing trees and attached "Land Survey Monument" and "Bearing Tree" signs.

Set a galvanized steel guard post with "Land Survey Marker" and "Property Boundary" decals, N34° W, 3 ft. Magnetic declination: 20° East



**SKETCH OF CORNER**

**CERTIFICATION**

I. Kevin A. Todd  
 certify the information shown herein is true and correct.  
*Kevin A. Todd*  
 Signature Ground Party Chief

I. Ronald A. Pearson  
 certify that this Corner Record correctly represents work performed by me or under my direction in compliance with the "Corner Recordation Act" (70-22-101, et seq., M.C.A.)  
*Ronald A. Pearson*  
 Signature of Surveyor & Seal

Date: 11/23/92 Reg. No. 9008 LS  
 Employer: U. S. FOREST SERVICE

Office of Clerk and Recorder, County of Lincoln. This "corner record" was filed for record on 12-15-92 was noted on the cross-index plat and is assigned page No. 5167, in book No. \_\_\_\_\_ Coral M. Cummings by B.B.  
 County Official



IM2 MS 10337A 30 N 34 W  
 Cross Index No. \_\_\_\_\_ T. \_\_\_\_\_ R. \_\_\_\_\_ PMM

• - corner this sheet