

## INSTRUCTIONS

1. Original and/or subsequent record used to evaluate the corner position.
2. Description of evidence found, note discrepancies in the record, state method of establishing lost or obliterated corners.
3. Description of monument and accessories set to perpetuate the corner position.
4. Sketch of corner, show all pertinent data which can best be shown in a sketch example, corner marking, topography ties, position of accessories, etc.
5. Certification must be signed and sealed by Land Surveyor registered in the State of Montana.
6. Fill in Cross Index & Section Diagram at bottom of sheet.

## CERTIFIED CORNER RECORDATION

Corner 3 of IRON CAP MS 10337A T. 30 N. R. 34 W. P.M.M. Lincoln County

- I. 1921 MS original record by James L. Sinclair: "A fir post 5 ft. long, 4 ins. square, set 2 ft. in the ground with a mound of earth and stone, scribed I.C. 3-10337A."

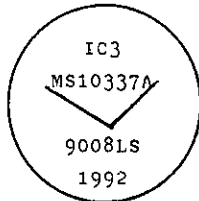
A fir tree, 14 ins. diam., bears  $N74^{\circ}14'W$ , 13.51 ft.  
A fir tree, 12 ins. diam., bears  $S78^{\circ}04'W$ , 24.46 ft.

.Both trees are blazed and scribed IC 3-10337A BT."

- II. No evidence of the original corner was found.

A pine, 29 ins. diam., mkd. IC3 10337A BT. (No record)

- III. At the calculated position. (See certificate of survey filed in Lincoln County courthouse) set a  $3/4$  in. diam., 30 ins. long, alum. rod 24 ins. in the ground with alum. cap mkd. as shown.

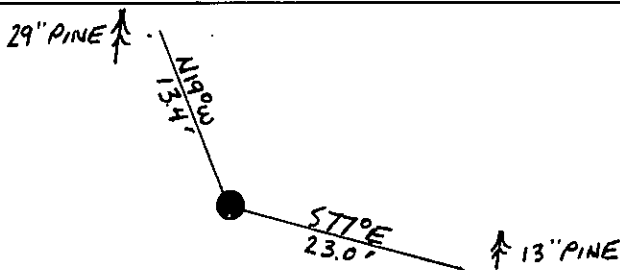


From which:

- A pine, 13 ins. diam., bears  $S77^{\circ}E$ , 23.0 ft. dist., mkd. IC3 MS10337A BT. (New BT)  
A pine, 29 ins. diam., bears  $N19^{\circ}W$ , 13.4 ft. dist., mkd. IC3 MS10337A BT. (Found unrecorded BT)

Painted red bands around the bearing trees and attached "Land Survey Monument" and "Bearing Tree" signs.

Set a galvanized steel guard post with "Land Survey Marker" and "Property Boundary" decals,  $N42^{\circ}W$ , 3 ft.  
Magnetic declination:  $20^{\circ}$  East



SKETCH OF CORNER

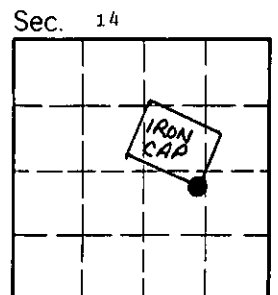
CERTIFICATION	
I, <u>Kevin A. Todd</u>	
certify the information shown herein is true and correct.	
<u>Kevin A. Todd</u>	
Signature Ground Party Chief	
I, <u>Ronald A. Pearson</u>	
certify that this Corner Record correctly represents work performed by me or under my direction in compliance with the "Corner Recordation Act" (70-22-101, et seq., M.C.A.)	
<u>Ronald A. Pearson</u>	
Signature of Surveyor & Seal	
Date: <u>11/23/92</u>	Reg. No. <u>9008 LS</u>
Employer: <u>U.S. FOREST SERVICE</u>	

Office of Clerk and Recorder, County of Lincoln. This "corner record" was filed for record on 12-15-92 was noted on the cross-index plat and is assigned page No. 5165, in book No. Coral M. Cummings by B.B.

County Official

IC3 MS 10337A 30 N 34 W

Cross Index No. T. R. PMM



• - corner this sheet