

INSTRUCTIONS

1. Original and/or subsequent record used to evaluate the corner position.
2. Description of evidence found, note discrepancies in the record, state method of establishing lost or obliterated corners.
3. Description of monument and accessories set to perpetuate the corner position.
4. Sketch of corner, show all pertinent data which can best be shown in a sketch example, corner marking, topography ties, position of accessories, etc.
5. Certification must be signed and sealed by Land Surveyor registered in the State of Montana.
6. Fill in Cross Index & Section Diagram at bottom of sheet.

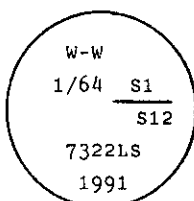
CERTIFIED CORNER RECORDATION

Corner W-W 1/64 Secs. 1 & 12 T. 30 N. R. 34 W. P.M.M. Lincoln County

I. No records found at Lincoln County Courthouse.

II. No found evidence on the ground.

III. At the determined corner position by survey, set a 3/4 ins. dia. aluminum rod, 30 ins. long, 24 ins. in the ground with attached 3 1/4 ins. dia. U.S.D.A. Forest Service aluminum cap, marked as shown:



from which

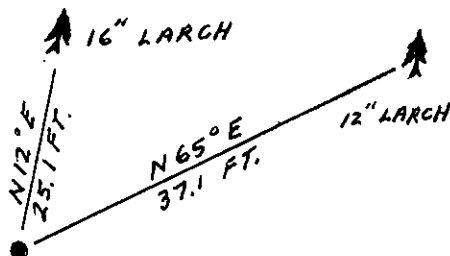
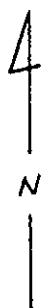
A larch, 16 ins. dia., bears N12° E, 25.1 ft. dist., mkd. WW 1/64 S1 BT.

A larch, 12 ins. dia., bears N65° E, 37.1 ft. dist., mkd. WW 1/64 S1 BT.

Set a 6 ft. galvanized steel guard post with "Survey Marker" and "Property Boundary" decals attached, 3 ft., North.

Painted a red band around each bearing tree and attached "Land Survey Monument" & "Bearing Tree" signs.

Magnetic Declination: East, 20°



SKETCH OF CORNER

CERTIFICATION

I, Kenneth Kern

certify the information shown herein is true and correct.

Kenneth R Kern
Signature Ground Party Chief

I, Alvah F. Hughes

certify that this Corner Record correctly represents work performed by me or under my direction in compliance with the "Corner Recordation Act" (70-22-101, et seq., M.C.A.)

Alvah F. Hughes
Signature of Surveyor & Seal

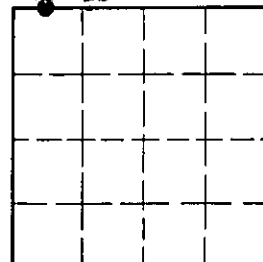
Date: 11/13/91 Reg. No. 7322LS

Employer: U.S. FOREST SERVICE

Office of Clerk and Recorder, County of Lincoln. This "corner record" was filed for record on 4-22-92 was noted on the cross-index plat and is assigned page No. 5072, in book No. ---

County Official
E21.5 30 N 34 W
Cross Index No. _____ T. _____ R. _____ PMM

Sec. 12



• - corner this sheet