

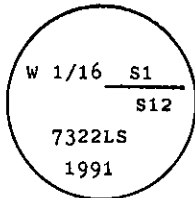
INSTRUCTIONS

1. Original and/or subsequent record used to evaluate the corner position.
2. Description of evidence found, note discrepancies in the record, state method of establishing lost or obliterated corners.
3. Description of monument and accessories set to perpetuate the corner position.
4. Sketch of corner, show all pertinent data which can best be shown in a sketch example, corner marking, topography files, position of accessories, etc.
5. Certification must be signed and sealed by Land Surveyor registered in the State of Montana.
6. Fill in Cross Index & Section Diagram at bottom of sheet.

CERTIFIED CORNER RECORDATION

Corner W 1/16 of Secs. 1 & 12 T. 30 N. R. 34 W. P.M.M. Lincoln County

- I. No records found at Lincoln County Courthouse.
- II. No found evidence on the ground.
- III. At the determined corner position by survey, set a 3/4 ins. dia. aluminum rod, 30 ins. long, 20 ins. in the ground with attached 3 1/4 ins. dia. U.S.D.A. Forest Service aluminum cap, marked as shown:



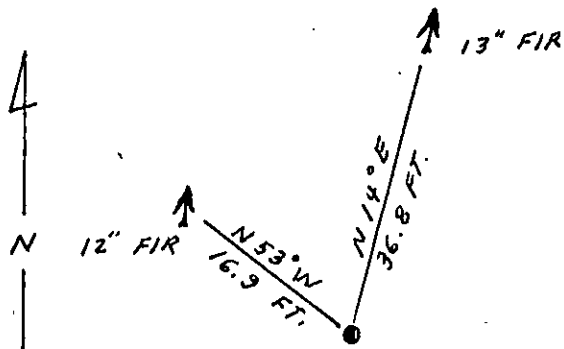
from which

- A fir, 12 ins. dia., bears N53° W, 16.9 ft. dist., mkd. W 1/16 S1 BT.
- A fir, 13 ins. dia., bears N14° E, 36.8 ft. dist., mkd. W 1/16 S1 BT.

Set a 6 ft. galvanized steel guard post with "Survey Marker" and "Property Boundary" decals attached, 3 ft., West.

Painted a red band around each bearing tree and attached "Land Survey Monument" & "Bearing Tree" signs.

Magnetic Declination: East, 20°



SKETCH OF CORNER

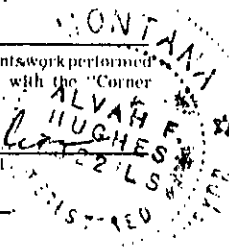
CERTIFICATION

I, Kenneth Kern
 certify the information shown herein is true and correct.
Kenneth R Kern
 Signature Ground Party Chief

I, Alvah F. Hughes
 certify that this Corner Record correctly represents work performed
 by me or under my direction in compliance with the "Corner
 Recordation Act" (70-22-101, et seq., M.C.A.)
Alvah F. Hughes
 Signature of Surveyor & Seal

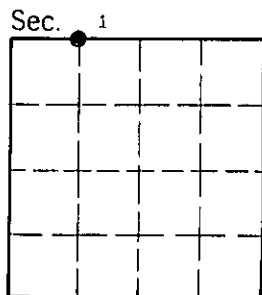
Date: 11/13/91 Reg. No. 7322LS

Employer: U.S. FOREST SERVICE



Office of Clerk and Recorder, County of Lincoln. This "corner record" was filed for record on 4-22-92 was noted on the cross-index plat and is assigned page No. 5071 in book No. _____

Carol M. [Signature]
 County Official



E22 30 N. 34 W
 Cross Index No. _____ T. _____ R. _____ P.M.M.

• - corner this sheet