

INSTRUCTIONS

1. Original and/or subsequent record used to evaluate the corner position.
2. Description of evidence found, note discrepancies in the record, state method of establishing lost or obliterated corners.
3. Description of monument and accessories set to perpetuate the corner position.
4. Sketch of corner, show all pertinent data which can best be shown in a sketch example, corner marking, topography ties, position of accessories, etc.
5. Certification must be signed and sealed by Land Surveyor registered in the State of Montana.
6. Fill in Cross Index & Section Diagram at bottom of sheet.

CERTIFIED CORNER RECORDATION

Corner SE 1/16 Sec. 2 T. 30 N. R. 34 W. P.M.M. Lincoln County

I. No record found at Lincoln County Courthouse

II. No evidence on the ground

III. At the determined corner position by survey, set a 3 1/4 ins. dia. U.S.D.A. Forest Service aluminum rock cap marked as shown:

SE 1/16 S2
7322LS
1991

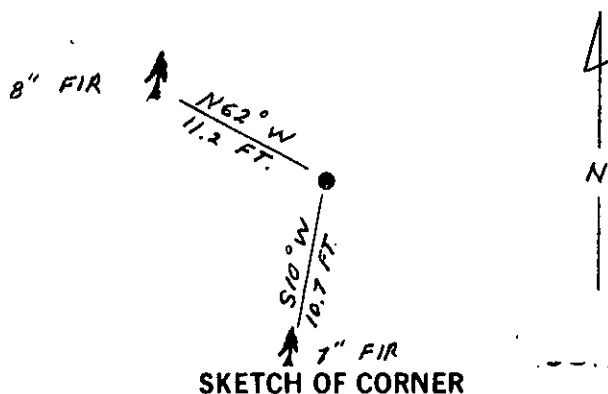
from which

- A douglas fir, 7 ins. dia., bears S10° W, 10.7 ft. dist., mkd. SE 1/16 S2 BT.
A douglas fir, 8 ins. dia., bears N62° W, 11.2 ft. dist., mkd. SE 1/16 S2 BT.

Set a 6 ft. galvanized steel guard post with "Survey Marker" and "Property Boundary" decals attached, 12 ft. North.

Painted a red band around each bearing tree and attached "Land Survey Monument" and "Bearing Tree" signs.

Magnetic Declination: East, 20°



CERTIFICATION

I, Kenneth Kern
certify the information shown herein is true and correct.

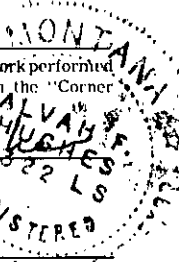
Kenneth R. Kern
Signature Ground Party Chief

I, Alvah F. Hughes
certify that this Corner Record correctly represents work performed by me or under my direction in compliance with the "Corner Recordation Act" (70-22-101, et seq., M.C.A.)

Alvah F. Hughes
Signature of Surveyor & Seal

Date: 11/13/91 Reg. No. 7322 LS

Employer: U.S. FOREST SERVICE



Office of Clerk and Recorder, County of Lincoln. This "corner record" was filed for record on 4-22-92 was noted on the cross-index plat and is assigned page No. 5070 in book No.

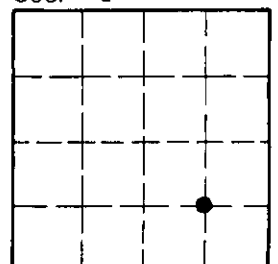
Carol M. C.
County Official

D20

30 N 34 W

Cross Index No. T. R. PMM

Sec. 2



• - corner this sheet