

INSTRUCTIONS

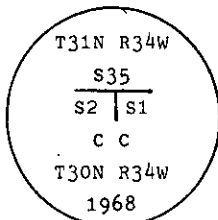
1. Original and/or subsequent record used to evaluate the corner position.
2. Description of evidence found, note discrepancies in the record, state method of establishing lost or obliterated corners.
3. Description of monument and accessories set to perpetuate the corner position.
4. Sketch of corner, show all pertinent data which can best be shown in a sketch example, corner marking, topography ties, position of accessories, etc.
5. Certification must be signed and sealed by Land Surveyor registered in the State of Montana.
6. Fill in Cross Index & Section Diagram at bottom of sheet.

CERTIFIED CORNER RECORDATION

Corner CC Cor. of Secs. 1 & 2 T. 30 N. R. 34 W. P.M.M. Lincoln County

I. 1913 original, G.L.O. record by Lewellyn D. Lyman et al: Set a stone monument with two bearing trees.

1968 B.L.M. remonumentation by Woodrow E. Damm et al: "The closing cor. of secs. 1 and 2, monumented with a slate stone, 16x12x6 ins., firmly set, mkd. with 1 notch on the E. and 5 notches on the W. edges. CC on the S. face, and witnessed by the remains of the original bearing trees. At the corner point, set an iron post, 30 ins. long, 2 1/2 ins. diam., 16 ins. in the ground and in a mound of stone, 4 ft. base to top, with brass cap mkd.



from which

The original bearing trees:

A rotted stump, bears S38 1/4° E, 84 lks. dist., with a fallen log mkd. T30N R34W S1 BT.
(Record)

A rotted stump, bears S54° W, 129 lks. dist., mkd. T30N R34W S2 BT. (Record)

The new bearing trees:

A fir, 6 ins. diam., bears S46 3/4° E, 42 lks. dist., mkd. T30N R34W S1 CC BT.

A fir, 8 ins. diam., bears S75° W, 55 lks. dist., mkd. T30N R34W S2 CC BT.

Bury the original stone alongside the iron post."

II. Found a 2 1/2 ins. diam. pipe, 12 ins. out of the ground, with B.L.M. brass cap mkd. as shown above, from which

A rotten fir root crown, bears S38° E, 55.5 ft. (84 lks.) dist. (G.L.O. red.)

A fir stump, 44 ins. diam., bears S54° W, 84.2 ft. (128 lks.) dist. mkd. "T30N R34W BT"
(G.L.O. red.)

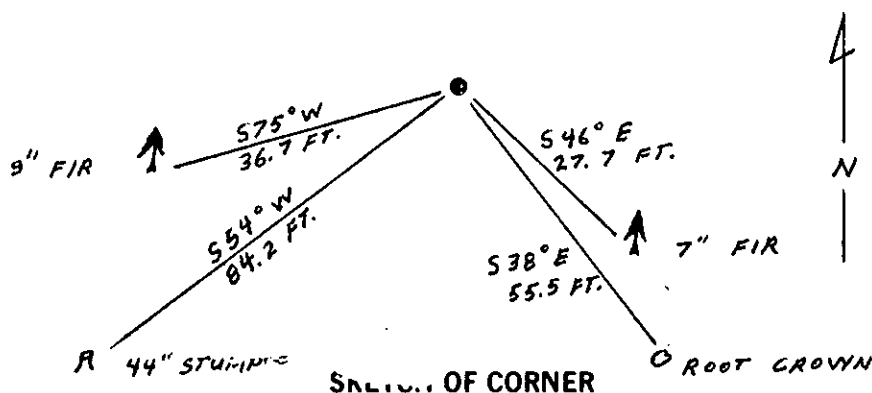
A fir, 7 ins. diam., bears S46° E, 27.7 ft. (42 lks.) dist., scribe overgrown (B.L.M. red.)

A fir, 9 ins. diam., bears S75° W, 36.7 ft. (56 lks.) dist., scribe overgrown (B.L.M. red.)

III. Rebuild mound of stone around monument.

Painted a red band around each bearing tree and attached "Land Survey Monument" & "Bearing Tree" signs.

Magnetic Declination: East, 20°



CERTIFICATION

Steve Boyer

I, Steve Boyer certify the information shown herein is true and correct.

Steve A. Boyer
Signature Ground Party Chief

Alvah F. Hughes

I, Alvah F. Hughes certify that this Corner Record correctly represents work performed by me or under my direction in compliance with the "Corner Recordation Act" (70-22-101, et seq., M.C.A.)

Alvah F. Hughes
Signature of Surveyor & Seal: 7322 L.S.

Date: 11/6/91 Reg. No. 7322 L.S.

Employer: U.S. FOREST SERVICE

Office of Clerk and Recorder, County of Lincoln. This "corner record" was filed for record on 4-22-92 was noted on the cross-index plat and is assigned page No. 5064 in book No. Corral M. Cummings

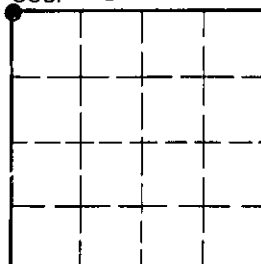
County Official

A21

30 N. 34 W.

Cross Index No. T. R. PMM

Sec. 1



• - corner this sheet