

INSTRUCTIONS

1. Original and/or subsequent record used to evaluate the corner position.
2. Description of evidence found, note discrepancies in the record, state method of establishing lost or obliterated corners.
3. Description of monument and accessories set to perpetuate the corner position.
4. Sketch of corner, show all pertinent data which can best be shown in a sketch example, corner marking, topography ties, position of accessories, etc.
5. Certification must be signed and sealed by Land Surveyor registered in the State of Montana.
6. Fill in Cross Index & Section Diagram at bottom of sheet.

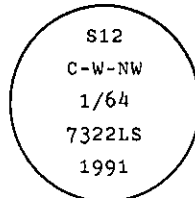
CERTIFIED CORNER RECORDATION

Corner C-W-NW 1/64 Sec. 12 T. 30 N. R. 34 W. P.M.M. Lincoln County

I. No record found at Lincoln County Courthouse

II. No evidence on the ground

III. At the determined corner position by survey, set a 3/4 ins. dia. aluminum rod, 30 ins. long, 24 ins. in the ground with attached 3 1/4 ins. dia. U.S.D.A. Forest Service aluminum cap, marked as shown:



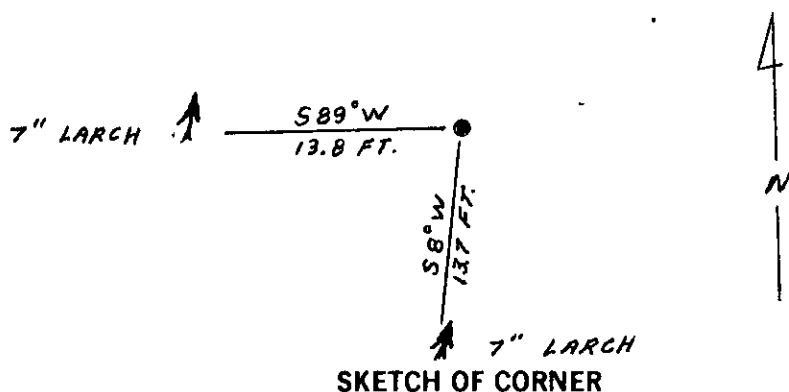
from which

A cedar, 4 ins. dia., bears S89°W, 13.8 ft. dist., mkd. X BT.

A larch, 7 ins. dia., bears S8°W, 13.7 ft. dist., mkd. C-W-NW-1/64 BT.

Painted a red band around each bearing tree and attached "Land Survey Monument" and "Bearing Tree" signs.

Magnetic Declination: East, 20°



CERTIFICATION

1. Tom Hommel

certify the information shown herein is true and correct.

Signature Ground Party Chief

1. Alvah F. Hughes

certify that this Corner Record correctly represents work performed by me or under my direction in compliance with the "Corner Recordation Act" (70-22-101, et seq., M.C.A.).

Signature of Surveyor & Seal

Date: 11/13/91

Reg. No. 7322

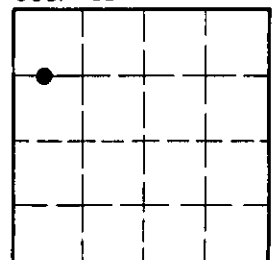
Employer: U.S. FOREST SERVICE

Office of Clerk and Recorder, County of Lincoln. This "corner record" was filed for record on 4-22-92 was noted on the cross-index plat and is assigned page No. 5063 in book No. —

County Official

F21.5 30 N 34 W
Cross Index No. T. R. PMM

Sec. 12



• corner this sheet