

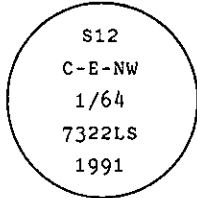
**INSTRUCTIONS**

1. Original and/or subsequent record used to evaluate the corner position.
2. Description of evidence found, note discrepancies in the record, state method of establishing lost or obliterated corners.
3. Description of monument and accessories set to perpetuate the corner position.
4. Sketch of corner, show all pertinent data which can best be shown in a sketch example, corner marking, topography ties, position of accessories, etc.
5. Certification must be signed and sealed by Land Surveyor registered in the State of Montana.
6. Fill in Cross Index & Section Diagram at bottom of sheet.

**CERTIFIED CORNER RECORDATION**

Corner C-E-NW 1/64 Sec. 12 T. 30 N. R. 34 W. P.M.M. Lincoln County

- I. No record found at Lincoln County Courthouse
- II. No evidence on the ground
- III. At the determined corner position by survey, set a 3/4 ins. dia. aluminum rod, 30 ins. long, 27 ins. in the ground with attached 3 1/4 ins. dia. U.S.D.A. Forest Service aluminum cap, marked as shown:



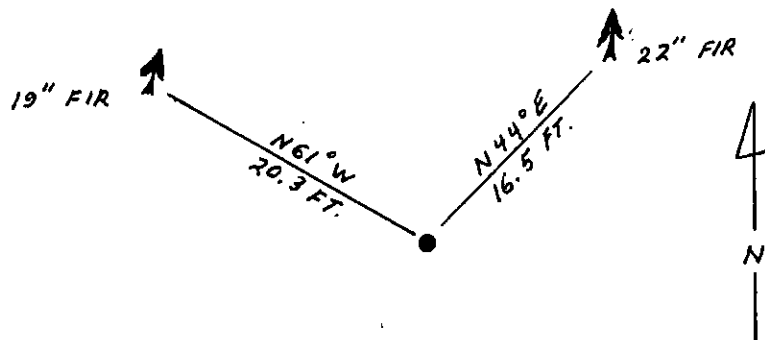
from which

- A douglas fir, 22 ins. dia., bears N44° E, 16.5 ft. dist., mkd. C-E-NW 1/64 S12 BT.
- A douglas fir, 19 ins. dia., bears N61° W, 20.3 ft. dist., mkd. C-E-NW 1/64 S12 BT.

Set a 6 ft. galvanized steel guard post with "Survey Marker" and "Property Boundary" decals attached, 3.5 ft. South.

Painted a red band around each bearing tree and attached "Land Survey Monument" and "Bearing Tree" signs.

Magnetic Declination: East, 20°



**SKETCH OF CORNER**

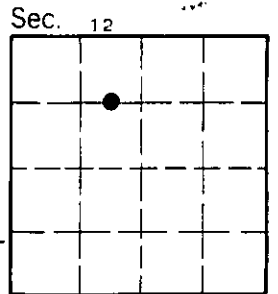
**CERTIFICATION**

I, Kenneth Kern  
 certify the information shown herein is true and correct.  
Kenneth R. Kern  
 Signature Ground Party Chief

I, Alvah F. Hughes  
 certify that this Corner Record correctly represents work performed by me or under my direction in compliance with the "Corner Recordation Act" (70-22-101, et seq., M.C.A.)  
Alvah F. Hughes  
 Signature of Surveyor  
 Date: 11/13/91 Reg. No. 7322 LS  
 Employer: U.S. FOREST SERVICE

Office of Clerk and Recorder, County of Lincoln This "corner record" was filed for record on 4-22-92 was noted on the cross-index plat and is assigned page No. 5059, in book No. \_\_\_\_\_

Carol M. [Signature]  
 County Official  
 Cross Index No. P22.5 T. 30 N R. 34 W P.M.M.



• - corner this sheet