

INSTRUCTIONS

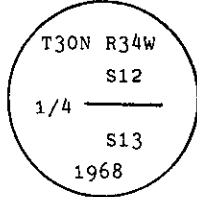
1. Original and/or subsequent record used to evaluate the corner position.
2. Description of evidence found, note discrepancies in the record, state method of establishing lost or obliterated corners.
3. Description of monument and accessories set to perpetuate the corner position.
4. Sketch of corner, show all pertinent data which can best be shown in a sketch example, corner marking, topography ties, position of accessories, etc.
5. Certification must be signed and sealed by Land Surveyor registered in the State of Montana.
6. Fill in Cross Index & Section Diagram at bottom of sheet.

CERTIFIED CORNER RECORDATION

Corner 1/4 Cor. of Secs. 12 & 13 T. 30 N. R. 34 W. Lincoln County

I. 1913 original G.L.O. record by Lewellyn D. Lyman et al: Set a stone monument raise a mound of stone.

1968 B.L.M. remonumentation record by Woodrow E. Damm et al: "The 1/4 sec. cor. of secs. 12 and 13, monumented with a limestone, 14x10x4 ins., firmly set, mkd. 1/4 on the N. face, and witnessed by a mound of stone on the N. At the corner point, set an iron post, 30 ins. long, 2 1/2 ins. diam., 24 ins. in the ground, with brass cap mkd.



from which

- A larch 10 ins. diam., bears S23 3/4° W, 111 lks. dist., mkd. 1/4 S13 BT.
- A fir, 7 ins. diam., bears N61° W, 108 lks. dist., mkd. 1/4 S12 BT.

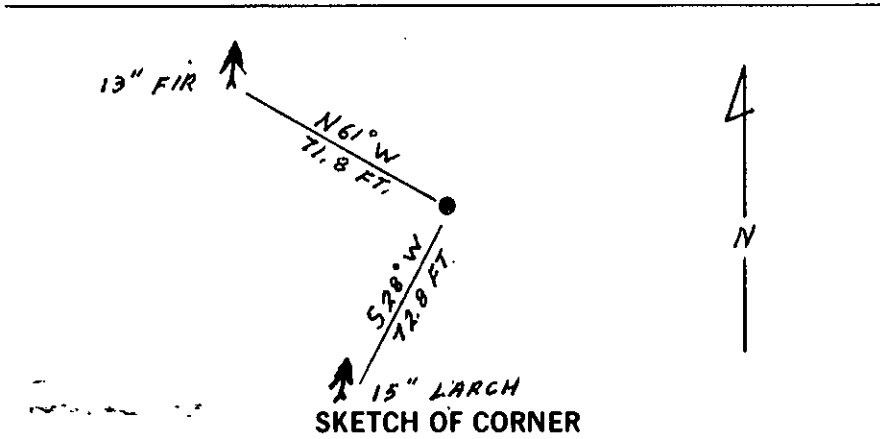
Bury the original stone alongside the iron post."

II. Found a 2 1/2 ins. diam. iron pipe, in a collar of stone, with B.L.M. brass cap mkd. as shown above, from which

- A larch, 15 ins. diam., bears S28° W, 72.8 ft. (110 lks.) dist., scribe overgrown.
- A fir, 13 ins. diam., bears N61° W, 71.8 ft. (108 lks.) dist., scribe overgrown.

III. Set a 6 ft. galvanized steel guard post with "Survey Marker" decal attached and painted a red band around each bearing tree and attached "Land Survey Monument" & "Bearing Tree" signs.

Magnetic Declination: East, 20°



CERTIFICATION

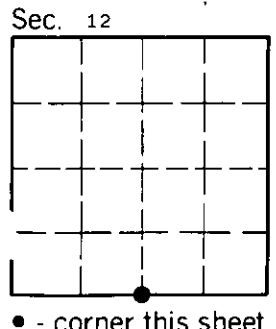
I. Steve Boyer
certify the information shown herein is true and correct.
Steve A. Boyer
Signature Ground Party Chief

I. Alvah F. Hughes
certify that this Corner Record correctly represents work performed by me or under my direction in compliance with the "Corner Recordation Act" (70-22-101, et seq., M.C.A.)
Alvah F. Hughes
Signature of Surveyor & Seal

Date: 11/7/91 Reg. No. 7322
Employer: U.S. FOREST SERVICE

Office of Clerk and Recorder, County of Lincoln This "corner record" was filed for record on 4-22-92 was noted on the cross-index plat and is assigned page No. 5056, in book No. _____

Carol Ann Cummings
County Official



J23 30 N 34 W
Cross Index No. _____ T. _____ R. _____ PMM