

INSTRUCTIONS

1. Original and/or subsequent record used to evaluate the corner position.
2. Description of evidence found, note discrepancies in the record, state method of establishing lost or obliterated corners.
3. Description of monument and accessories set to perpetuate the corner position.
4. Sketch of corner, show all pertinent data which can best be shown in a sketch example, corner marking, topography ties, position of accessories, etc.
5. Certification must be signed and sealed by Land Surveyor registered in the State of Montana.
6. Fill in Cross Index & Section Diagram at bottom of sheet.

CERTIFIED CORNER RECORDATION

Corner 1/4 Cor. of Secs. 1 & 2 T. 30 N. R. 34 W. P.M.M. Lincoln County

- I. 1913 original, G.L.O. record by Lewellyn D. Lyman et al: "A balsam fir, 10 ins. diam. for 1/4 sec. cor., I mark 1/4 S2 on W. side, and S1 on E. side, from which

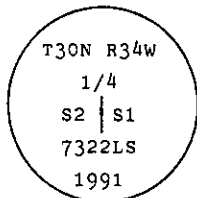
A hemlock, 8 ins. diam., bears N36 1/2° E. 20 lks. dist., marked 1/4 S1 BT.

A hemlock, 11 ins. diam., bears S63 1/2° W. 35 lks. dist., marked 1/4 S2 BT."

- II. Found a rotten fir stump, mkd. "1" on E. face other scribe destroyed by rot, from which

A rotten hemlock stump, 14 ins. dia., bears N37° E. 14.7 ft. (22 lks.) dist., mkd "S1 BT".

- III. In center of stump, set a 2 1/2 ins. dia. aluminum pipe, 30 ins. long, 24 ins. in the ground with attached 3 1/4 ins. dia. U.S.D.A. Forest Service aluminum cap, marked as shown:



Establish two new bearing tree:

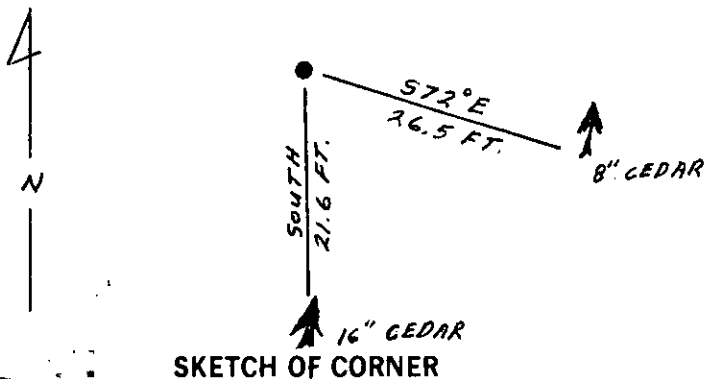
A cedar, 8 ins. dia., bears S72° E. 26.5 ft. dist., mkd. 1/4 S1 BT.

A cedar, 16 ins. dia., bears South, 21.6 ft. dist., mkd. 1/4 S2 BT.

Set a 6 ft. galvanized guard post with "Survey Marker" and "Property Boundary" decals attached, 3 ft. East.

Painted a red band around each bearing tree and attached "Land Survey Monument" & "Bearing Tree" signs

Magnetic Declination: East, 20°



SKETCH OF CORNER

CERTIFICATION

I, Kevin A. Todd

certify the information shown herein is true and correct.

Kevin A. Todd
Signature Ground Party Chief

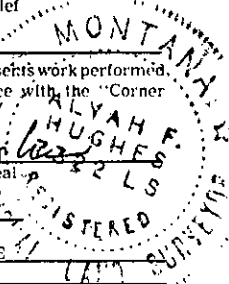
I, Alvah F. Hughes

certify that this Corner Record correctly represents work performed by me or under my direction in compliance with the "Corner Recordation Act" (70-22-101, et seq., M.C.A.)

Alvah F. Hughes
Signature of Surveyor & Seal

Date: 11/6/91 Reg. No. 7322 LS

Employer: U.S. FOREST SERVICE



Office of Clerk and Recorder, County of Lincoln. This "corner record" was filed for record on 4-22-92 was noted on the cross-index plat and is assigned page No. 5952 in book No. Corral Fl. Comm. Maps

County Official

C21

30 N

34 W

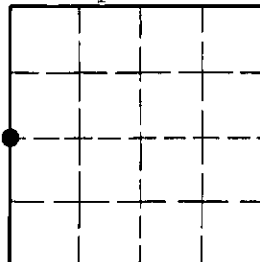
Cross Index No.

T.

R.

PMM

Sec. 1



• - corner this sheet