

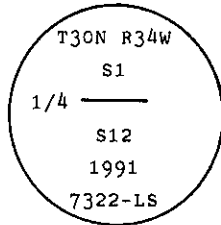
INSTRUCTIONS

1. Original and/or subsequent record used to evaluate the corner position.
2. Description of evidence found, note discrepancies in the record, state method of establishing lost or obliterated corners.
3. Description of monument and accessories set to perpetuate the corner position.
4. Sketch of corner, show all pertinent data which can best be shown in a sketch example, corner marking, topography ties, position of accessories, etc.
5. Certification must be signed and sealed by Land Surveyor registered in the State of Montana.
6. Fill in Cross Index & Section Diagram at bottom of sheet.

CERTIFIED CORNER RECORDATION

Corner 1/4 Cor. of Secs. 1 & 12 T. 30 N. R. 34 W. P.M.M. Lincoln County

- I. 1913 original, G.L.O. record by Lewellyn D. Lyman et al: "Set a limestone, 14x9x7 ins., 10 ins. in the ground, for 1/4 sec. cor., marked 1/4 on N. face and raise a mound of stone, 2 ft. base, 1 1/2 ft. high N. of cor."
- II. Found a set stone, 14x7x3 ins., mkd. 1/4 on N. face, from which
- A mound of stone, bears North, 1 ft. dist.
- III. In place of stone monument, set a 2 1/2 ins. dia. aluminum pipe, 30 ins. long, 24 ins. in the ground with attached 3 1/4 ins. dia. U.S.D.A. Forest Service aluminum cap, marked as shown:



Establish two new bearing tree:

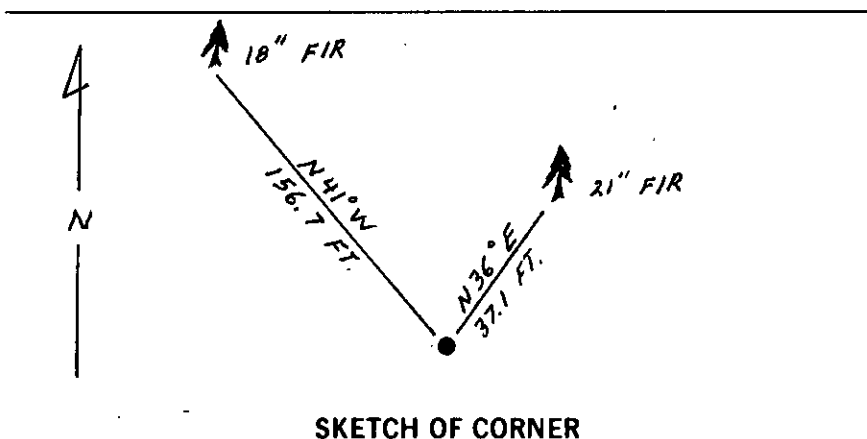
- A fir, 21 ins. dia., bears N36° E, 37.1 ft. dist., mkd. 1/4 S1 BT.
- A fir, 18 ins. dia., bears N41° W, 156.7 ft. dist., mkd. 1/4 S1 BT.

Set a 6 ft. galvanized guard post with "Survey Marker" and "Property Boundary" decals attached, 4 ft. South.

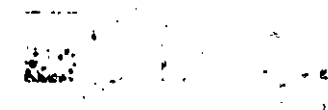
Painted a red band around each bearing tree and attached "Land Survey Monument" & "Bearing Tree" signs.

Bury original stone monument alongside aluminum pipe.

Magnetic Declination: East, 20°



SKETCH OF CORNER



CERTIFICATION

I, Kenneth Kern
certify the information shown herein is true and correct.

Kenneth R. Kern
Signature Ground Party Chief

I, Alvah F. Hughes
certify that this Corner Record correctly represents work performed by me or under my direction in compliance with the "Corner Recordation Act" (70-22-101, et seq., M.C.A.)

Alvah F. Hughes
Signature of Surveyor Seal

Date: 11/6/91 Reg. No. 7322-LS

Employer: U.S. FOREST SERVICE

Office of Clerk and Recorder, County of Lincoln This "corner record" was filed for record on 4-22-92 was noted on the cross-index plat and is assigned page No. 5051 in book No. _____

County Official _____

E23 30 N 34 W
Cross Index No. _____ T. _____ R. _____ PMM

