

INSTRUCTIONS

1. Original and/or subsequent record used to evaluate the corner position.
2. Description of monument found, note discrepancies in the record, state method of establishing lost or obliterated corners.
3. Description of monument and accessories set to perpetuate the corner position.
4. Sketch or corner, show all pertinent data which can best be shown in a sketch example, corner marking, topography ties, position of accessories, etc.
5. Certification must be signed and sealed by Registered Land Surveyor in State of Montana.
6. Fill in Cross Index & Section Diagram at bottom of sheet.

CERTIFIED CORNER RECORDATION

Corner W 1/16 Sec. 24 T. 30N R. 34W P.M.M. LINCOLN County

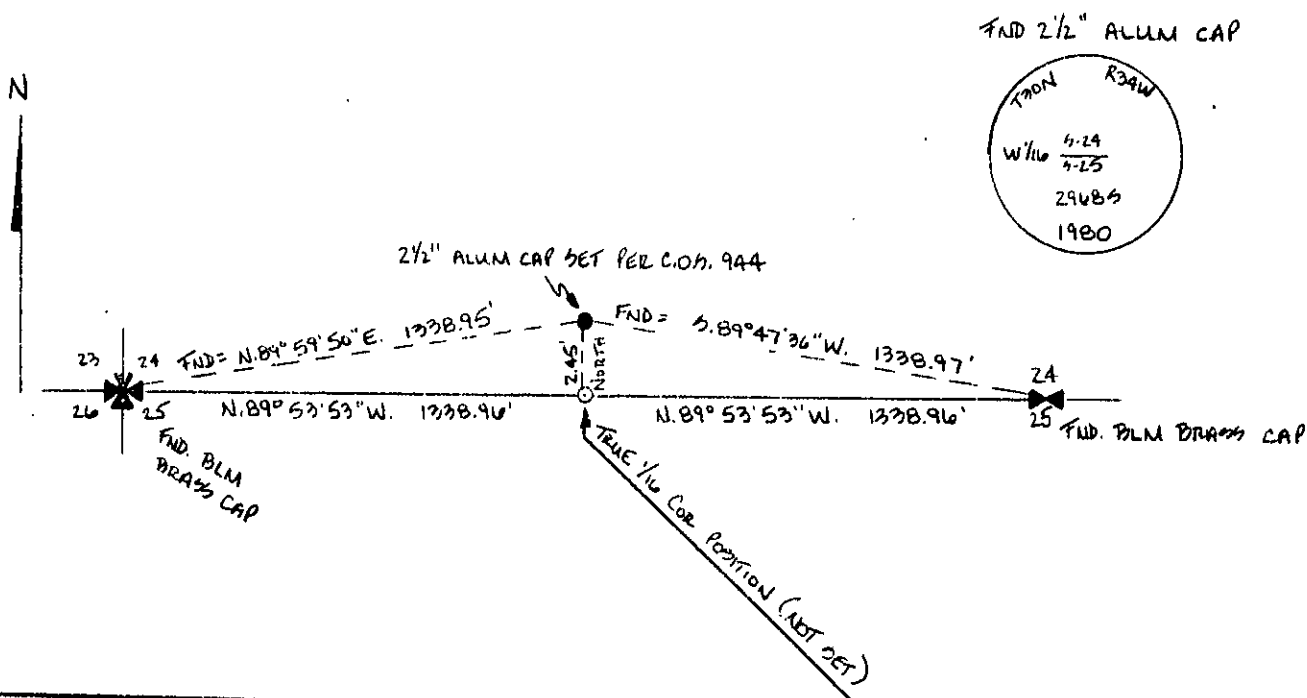
I. 2 1/2" alum. cap set per COS #944

- ? " cedar bears N.85 E., 84.2'
- ? " spruce bears S.52 W., 39.4'
- ? " cedar bears N.88 W., 27.3'

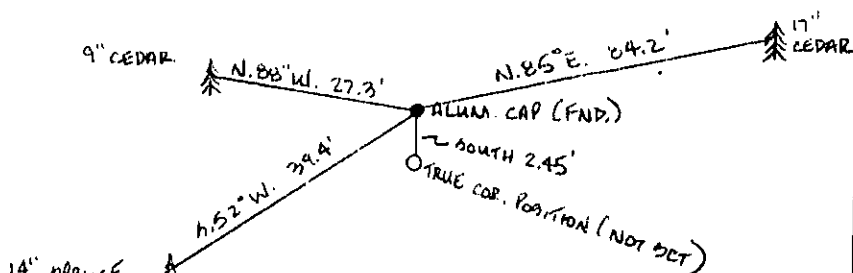
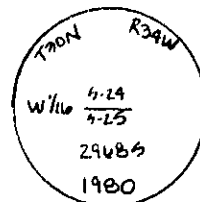
II. Found 2 1/2" alu. cap from which:

- A 17" cedar bears N.85 E., 84.2' with scribing
 - A 14" spruce bears S.52 W., 39.4' with scribing
 - 1 9" cedar bears N.88 W., 27.3' with scribing
- Corner was found to be erroneously set 2.45 feet to far North from the true position. This was determined by directly tying into the controlling SW and S 1/4 corners of Section 24.

III. Existing monument was left in place and no new monument was set to perpetuate the true corner position.



FND 2 1/2" ALUM CAP



SKETCH OF CORNER

CERTIFICATION

I, GLENN KNODLE
 certify the information shown herein is true and correct.

Glenn Knodle
 Signature of Grant Party Chief

I, H. GENE WARDEN
 certify that this Corner Record correctly represents work performed by me or under by direction in compliance with the "Corner Recordation Act" (70-22-101, et seq., M.D.A.)

H. Gene Warden
 Signature of Surveyor & Seal

Date: 9/84 Reg. No. 27345

Employee: ROCKY MOUNTAIN SURVEYORS

Office of Clerk and Recorder, County of LINCOLN. This "corner record" was filed for record on the NOV 30 day of 1984 was noted on the cross-index plat and is assigned page No. 2796, in book No. _____

Janet BF Sigel by Betty Conner
 County Official deputy

