

INSTRUCTIONS

1. Original and/or subsequent record used to evaluate the corner position.
2. Description of evidence found, note discrepancies in the record, state method of establishing lost or obliterated corners.
3. Description of monument and accessories set to perpetuate the corner position.
4. Sketch of corner, show all pertinent data which can best be shown in a sketch example, corner marking, topography ties, position of accessories, etc.
5. Certification must be signed and sealed by Land Surveyor registered in the State of Montana.
6. Fill in Cross Index & Section Diagram at bottom of sheet.

CERTIFIED CORNER RECORDATION

Corner Cor. 8 HES 577 T. 30N R. 34W P.M.M. Lincoln County

- I. Original 1917 GLO Record: Set a small stone, mkd. with a cross(x) under a quartzite stone 26x12x6ins. 16 ins. in the ground, mkd. 8 HES 577 on W. face, with a cross(X) on top for exact corner point, from which:

A cross(x) on a pine, 4 ins. diam., bears N.23½°E., 84 lks. dist.

A cross(X) on a pine, 6 ins. diam., bears S.70½°W., 88 lks. dist.

Each blazed and scribed 8 HES 577 BT.

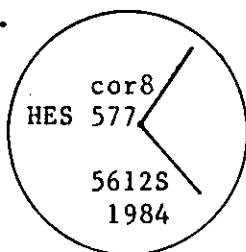
Raise a mound of earth 4 ft. base and 2 ft. high W. of corner.

- II. No evidence of corner was found. Corner position falls in the cutbank of an old logging road.

from which the remaining original bearing tree:

A pine snag, 12 ins. diam., bears S.70¼°W., 58.1 ft. visible scribe (HES 577 BT).

- III. At N.70½°E., 58.1 ft. from the original bearing tree, I set a 3/4in. diam. by 30in. long aluminum rod with a 3/4in. diam. aluminum cap mkd. as shown and surrounded by a stone collar.



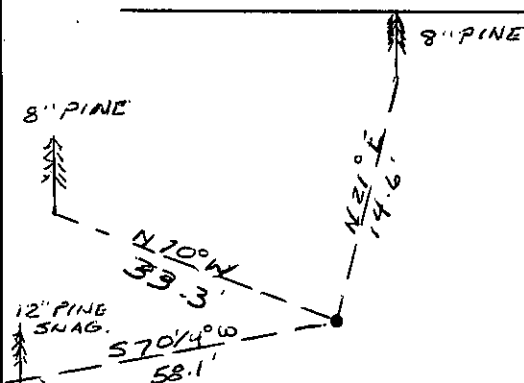
from which the new bearing trees:

A 1p pine, 8ins. diam., bears N.70°W., 33.3 ft. dist., scribed Cor 8 HES 577 BT.

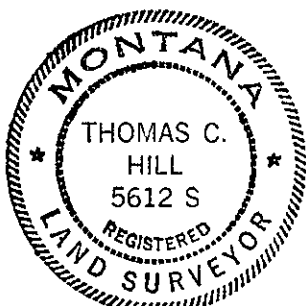
A 1p pine, 8ins. diam., bears N.21°E., 14.6 ft. dist., scribed Cor 8 HES 577 BT.

Painted red bands around the BT's and attached signs.

Set a 6 ft. galvanized post with a survey marker decal 1 ft. S. of corner.



SKETCH OF CORNER



CERTIFICATION

I, James W. Reed

certify the information shown herein is true and correct.

James W. Reed
Signature Ground Party Chief

I, Thomas C. Hill

certify that this Corner Record correctly represents work performed by me or under my direction in compliance with the "Corner Recordation Act" (70-22-101, et seq., M.C.A.)

Thomas C. Hill
Signature of Surveyor & Seal

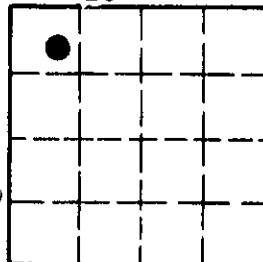
Date: 6/14/84 Reg. No. 5612S

Employer: U.S.F.S.

Office of Clerk and Recorder, County of Lincoln. This "corner record" was filed for record on July 12, 1984 was noted on the cross-index plat and is assigned page No. 2682, in book No. _____

Janet B. Sigel Jeanne Dennis
County Official Deputy

Sec. 23



• corner this sheet

Cross Index No. _____ T. 30N R. 34W P.M.M.

Adopted July 1, 1981, Montana Board of Professional Engineers & Land Surveyors