

INSTRUCTIONS

1. Original and/or subsequent record used to evaluate the corner position.
2. Description of evidence found, note discrepancies in the record, state method of establishing lost or obliterated corners.
3. Description of monument and accessories set to perpetuate the corner position.
4. Sketch of corner, show all pertinent data which can best be shown in a sketch example, corner marking, topography ties, position of accessories, etc.
5. Certification must be signed and sealed by Land Surveyor registered in the State of Montana.
6. Fill in Cross Index & Section Diagram at bottom of sheet.

CERTIFIED CORNER RECORDATION

HES

Corner Cor. 4 HES 581, Cor. 9 577 T. 30N R. 34W P.M.M. Lincoln County

1917 GLO Record: For cor. # 4 HES 581, set a small stone, mkd. with a cross(x), under a quartzite stone 26x10x6in., 16in. in the ground, mkd. 4 HES 581 on S. face, and a cross(x) on top for exact corner point.

from which:

A cross(X) on a black pine, 4in. diam., bears N.71½°W., 14 lks. distant.
 A cross(X) on a black pine, 4in. diam., bears S.25½°W., 20 lks. distant.
 Each blazed and scribed 4 HES 581 BT.
 Raise mound of earth 4 ft. base, 2 ft. high, S. of corner.

1917 GLO Record: For cor. # 9 HES 577 identical with cor. # 4 HES 581, which is a quartzite stone 10X10X6ins. above ground as set by me May 19, 1917. I adopt this cor. for cor. # 9 of this survey and mark it 9 HES 577 on W. face.

from the cross(X) on corner:

A cross(X) on a pine tree 4in. diam., bears N.24½°E., 19 lks. dist.
 A cross(X) on a pine tree 4in. diam., bears N.80°45'W., 20 lks. dist.
 Each blazed and scribed 9 HES 577 BT.
 Raise a mound of earth 4 ft. base, 2 ft. high, W. of corner.

- II. I found a slate stone 8X10in. 10in. above ground with a chiseled X on top, HES 577 on N. face, a 9 on the E. face and 4 HES 581 on the S. face, with a galvanized post 2 ft. above ground.

from which:

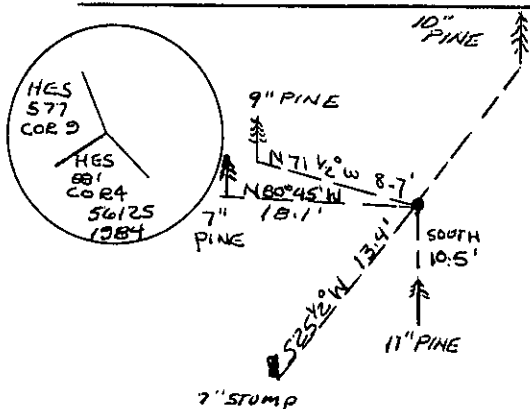
A pine, 9in. diam., bears N.71½°W., 8.7 ft., healed face.
 A stump, 7in. diam., bears S.25½°W., 13.4 ft., healed face.
 A pine, 10in. diam., bears N.25½°E., 12 ft., healed face.
 A pine, 7in. diam., bears N.80°45'W., 18.1 ft., healed face.

- III. Set a 2in. diam. X 30in. long aluminum pipe with a ¾in. diam. aluminum cap, 6in. above ground and mkd. as shown. buried original stone alongside pipe.

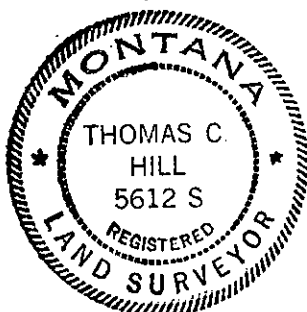
from which the new BT:

A pine, 11in. diam., bears south, 10.5 ft. dist., scribed Cor 4 HES 581 BT.

Set a 6 ft. galvanized post 2 ft. in the ground, 3 ft. N. of corner.
 Painted red bands around BT's and put up new BT signs.



SKETCH OF CORNER



CERTIFICATION

I, James W. Reed

certify the information shown herein is true and correct.

James W. Reed
 Signature Ground Party Chief

I, Thomas C. Hill

certify that this Corner Record correctly represents work performed by me or under my direction in compliance with the "Corner Recordation Act" (70-22-101, et seq., M.C.A.)

Thomas C. Hill
 Signature of Surveyor & Seal

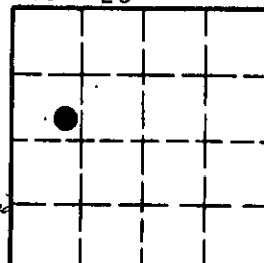
Date: 6/21/84 Reg. No. 5612S

Employer: U.S.F.S.

Office of Clerk and Recorder, County of Lincoln. This "corner record" was filed for record on July 12, 1984 was noted on the cross-index plat and is assigned page No. 2681, in book No. _____

Janet B. Sigel
 County Official

Sec. 23



• - corner this sheet

Cross Index No. _____ T. 30N R. 34W PMM

Adopted July 1, 1981, Montana Board of Professional Engineers & Land Surveyors