

INSTRUCTIONS

1. Original and/or subsequent record used to evaluate the corner position.
2. Description of evidence found, note discrepancies in the record, state method of establishing lost or obliterated corners.
3. Description of monument and accessories set to perpetuate the corner position.
4. Sketch of corner, show all pertinent data which can best be shown in a sketch example, corner marking, topography ties, position of accessories, etc.
5. Certification must be signed and sealed by Land Surveyor registered in the State of Montana.
6. Fill in Cross Index & Section Diagram at bottom of sheet.

CERTIFIED CORNER RECORDATION

Corner CC Cor. 11 HES 577 T. 30N R. 34W P.M.M. Lincoln County

1917 GLO Record: Set a small stone mkd. with a cross(x), under a quartzite stone 24x9x5in., 14ins. in the ground, mkd. CC 11 HES 577 on SE face and a cross(x) on top for the exact corner point.
from which:

A cross(x) on a spruce, 12in. diam., bears N.12½°W., 24 lks. dist.
A cross(x) on a balsam, 10in. diam., bears N.45½°W., 21 chs. dist.
Each blazed and scribed 11 HSE 577 BT.
Raise a mound of earth 4 ft. base and 2 ft. high, SE of corner.

1957 Dependant Resurvey: Point for cor. 11 as determined from orig. BT's.

A dead spruce, 12in. diam., bears N.12½°W., 24lks. mkd. 11 HES 577 BT.
A rotted spruce stump hole, bears N.45½°W., 21lks. (Record: 21ch.)

No trace of the original stone monument or the stone sub-surface deposit were found. The point falls in the flood plain of Keeler Creek and is subject to heavy erosion.

At the corner point: Set an iron post, 2½in. diam., 30in. long, 28ins. in the ground, with a brass cap mkd., from which:

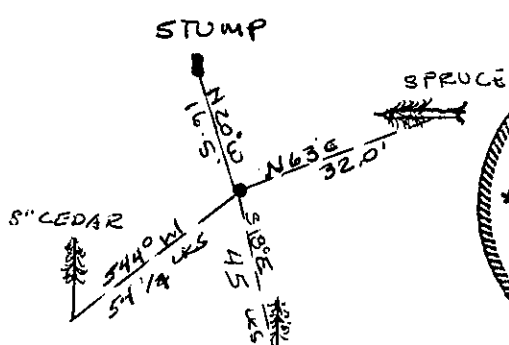
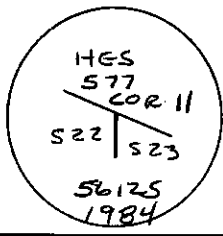
A spruce, 12ins. diam., bears N.63½°E., 49 lks. dist., mkd. 11 HES 577 BT.
A spruce, 10ins. diam., bears N.21½°W., 25 lks. dist., mkd. 11 HES 577 BT.

II. Monument was washed away by Keeler Creek, 2 BT's found.

A downed spruce bears N.63°E., 32 ft., scribing visible.
A rotten stump, bears N.20°W., 16.5 ft., scribing visible.

III. I set ¾in. diam. x 30 in. long aluminum rod with a ¾in. diam. aluminum cap, 6ins. exposed, surrounded by stone collar and mkd. as shown, from which the new BT's:

A cedar, 14in. diam., bears S.18°E., 45 lks. dist., mkd. 11 HES 577 BT.
A cedar, 8in. diam., bears S.44°W., 54½ lks. dist., mkd. 11 HES 577 BT.
Set a 6 ft. carsonite post 1 ft. S. of cor., painted red bands around all BT's. and attached new BT signs.



SKETCH OF CORNER

CERTIFICATION

I, James W. Reed
certify the information shown herein is true and correct.
James W. Reed
Signature Ground Party Chief

I, Thomas C. Hill
certify that this Corner Record correctly represents work performed by me or under my direction in compliance with the "Corner Recordation Act" (70-2-101, et seq., M.C.A.)
Thomas C. Hill
Signature of Surveyor & Seal

Date: 6/21/84 Reg. No. 5612S
Employer: USFS

Office of Clerk and Recorder, County of Lincoln. This "corner record" was filed for record on July 12, 1984 was noted on the cross-index plat and is assigned page No. 2679, in book No. _____

Janet R. Sigel by *Jeanne Alamo*
County Official Deputy

Sec. 22
