

CERTIFIED LAND CORNER RECORDATION
(REFERENCE FSM 7153.53)

DESCRIPTION OF CORNER EVIDENCE FOUND, AND ORIGINAL RECORD (IF KNOWN)

Shale stone Mkd 1/4 on N face (No evidence) " 1903 "

18" Pine N. 63° E. 53 Lks. Found Alive & standing
26" Pine S. 54° W. 24 Lks. Found Alive & standing

DESCRIPTION OF MONUMENT AND ACCESSORIES ESTABLISHED
TO PERPETUATE THE ORIGINAL LOCATION OF THIS CORNER:

Date of work: 10/6/80

Set standard aluminum post & cap 24" in the ground at position of record distance from original BTs.

New BTs;

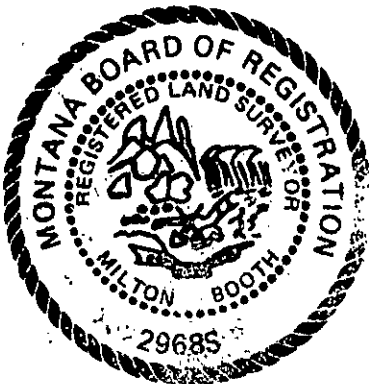
9" Pine N. 8° W. 30.5 feet Mkd. T 30 N R 34 W 1/4 S 35 BT
14" Pine N. 25° E. 46.8 feet Mkd. T 30 N R 34 W 1/4 S 35 BT

Bearing tree tags affixed & location poster
Brass tags # 2968 set at base of BTs at root crown distance from corner.

SKETCH, WITH COURSE AND DISTANCE TO ADJACENT CORNERS IF DETERMINED IN THIS SURVEY.
(MAY SKETCH OR PASTE REPRODUCTION ON REVERSE SIDE.)

See Survey Plat, South Fork Keeler, T. 30 N., R. 34 W., P.M.

Surveyor's Seal



I, _____
certify that the information shown herein is true and correct.

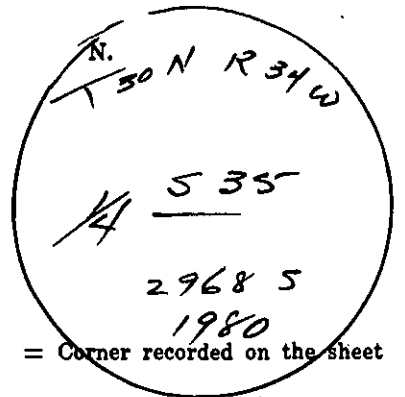
Signature of Ground Party Chief

Milton I. Booth

I, _____
certify that I have carefully performed or reviewed the work done on the diagrammed corner as reported on this recordation form and approve the same.

Milton I Booth
Signature of Surveyor

DIAGRAM OF CORNER:



Registration Number

Office of Clerk and Recorder, County of Lincoln

This "corner record" was filed for record on the 1st day of September, 1981, was noted on the cross-index plat and is assigned page No. 1210, in book No. 1

Charles L. Taugher
County Official

Cross Index No. 2-18 T. 30 N R. 34 W P. Mer. 2-19