

**CERTIFIED LAND CORNER RECORDATION**  
(REFERENCE FSM 7153.53)

DESCRIPTION OF CORNER EVIDENCE FOUND, AND ORIGINAL RECORD (IF KNOWN)

Granite Stone 16 x 10 x 8 ( Found )  
16" Fir N. 12° E. 113 Lks. ( No evidence )  
18" Pine S. 53° E. 80 Lks. ( Found alive & standing )  
12" Fir S. 65° W. 84 Lks. ( Found stump with scribing )  
30" Fir N. 7° W. 125 Lks. Found )

DESCRIPTION OF MONUMENT AND ACCESSORIES ESTABLISHED  
TO PERPETUATE THE ORIGINAL LOCATION OF THIS CORNER:

Date of work: 7/27/80

Set standard aluminum post & cap, buried original rock alongside.

New BTs;

6" Doug. Fir S. 52° W. 32.8 feet Mkd. T30N R34W S27BT  
6" Doug. Fir S. 33° E. 49.9 feet Mkd. T30N R34W S26BT

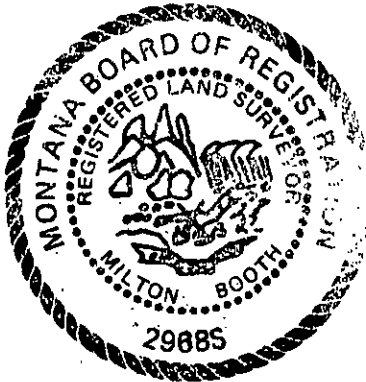
Bearing tree tags affixed

Brass tags # 2968 S set at base of BTs at root crown distance from corner.

SKETCH, WITH COURSE AND DISTANCE TO ADJACENT CORNERS IF DETERMINED IN THIS SURVEY.  
(MAY SKETCH OR PASTE REPRODUCTION ON REVERSE SIDE.)

See Survey Plat, South Fork Keeler, T. 30 N., R. 34 W., P.M.

Surveyor's Seal



I, \_\_\_\_\_  
certify that the information shown herein is true and correct.

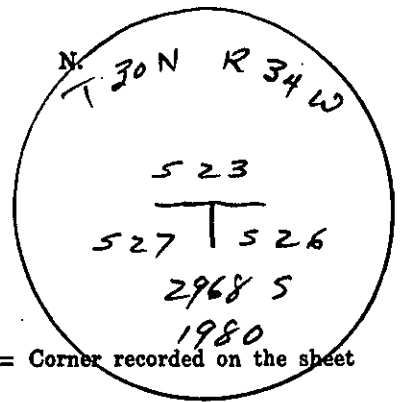
Signature of Ground Party Chief

Milton I. Booth

I, \_\_\_\_\_  
certify that I have carefully performed or reviewed the work done on the diagrammed corner as reported on this recordation form and approve the same.

*Milton I Booth*  
Signature of Surveyor

DIAGRAM OF CORNER:



= Corner recorded on the sheet

2968 S  
Registration Number

Office of Clerk and Recorder, County of Lincoln

This "corner record" was filed for record on the 1st day of September, 1981, was noted on the cross-index plat and is

assigned page No. 1191, in book No. 1

*Klaus L. Tugler* by *Betty Bell*  
County Official Deputy

Cross Index No. R-17 T. 30 N. R. 34 W. P. Mer.