

CERTIFIED LAND CORNER RECORDATION

SECTION 29 TWP. 30 N., R. 33 W., P.M.M.

DESCRIPTION OF CORNER EVIDENCE FOUND, AND ORIGINAL RECORD (IF KNOWN)

Corners set as objective of this survey were not previously established. Corners found are shown on diagram REVERSE SIDE.

DESCRIPTION OF MONUMENT AND ACCESSORIES ESTABLISHED TO PERPETUATE THE ORIGINAL LOCATION OF THIS CORNER:

Date of work: 8/80

Corners set on south line of Section 29 shown and described on diagram on REVERSE SIDE.

SKETCH, WITH COURSE AND DISTANCE TO ADJACENT CORNERS IF DETERMINED IN THIS SURVEY. (MAY SKETCH OR PASTE REPRODUCTION ON REVERSE SIDE.)

SEE REVERSE SIDE

Surveyor's Seal

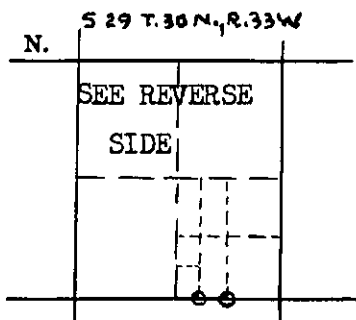
I, David Stanley
certify that the information shown herein is true and correct.

David B. Stanley
Signature of Ground Party Chief

I, Jack H. Ninneman
certify that I have carefully performed or reviewed the work done on the diagrammed corner as reported on this recordation form and approve the same.

Jack H. Ninneman
Signature of Surveyor

DIAGRAM OF CORNER:



○ = Corner recorded on the sheet

4661 S.

Registration Number

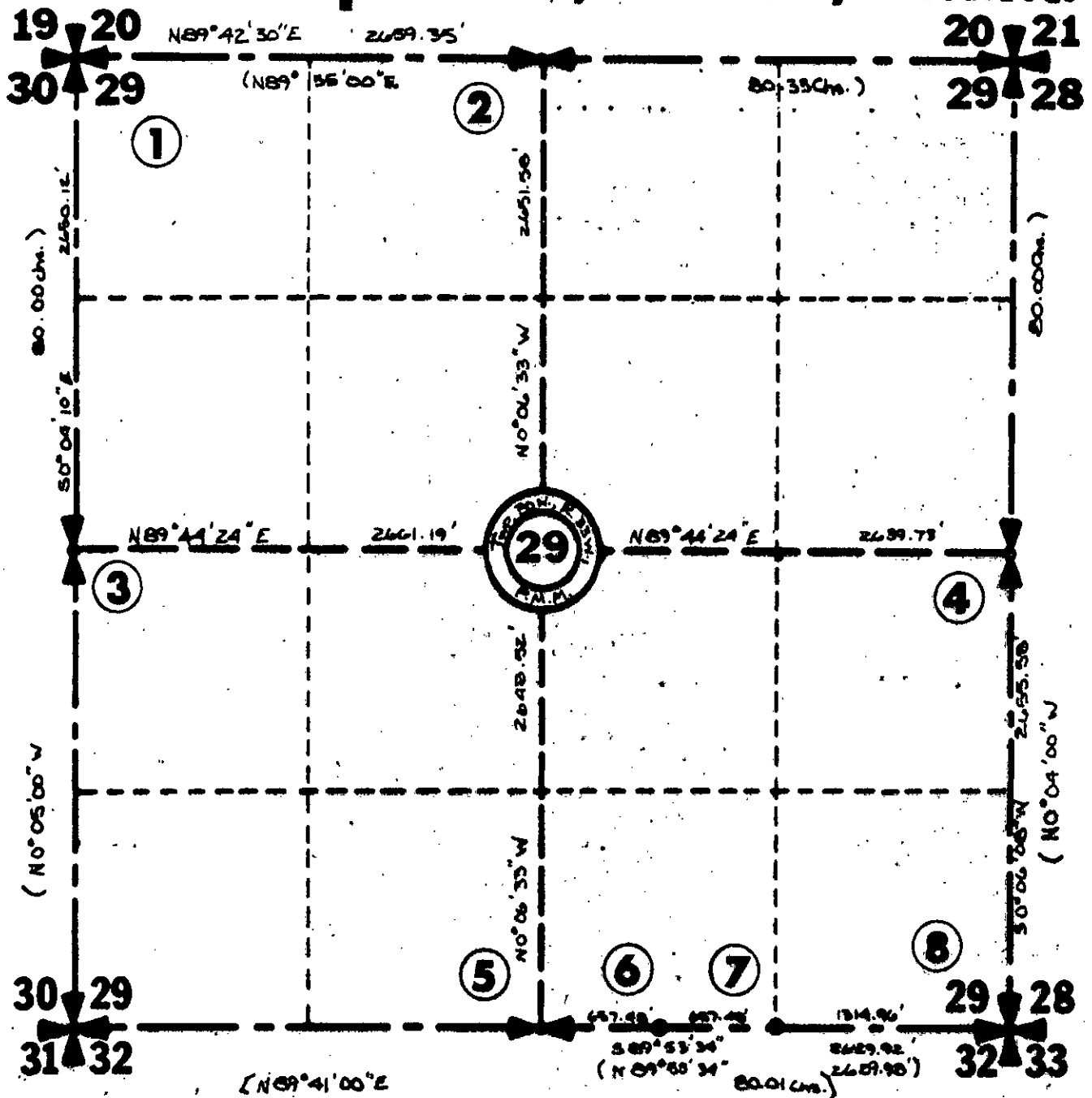
Office of Clerk and Recorder, County of Lincoln

This "corner record" was filed for record on the 2nd day of December, 1980, was noted on the cross-index plat and is assigned page No. 934, in book No. 1

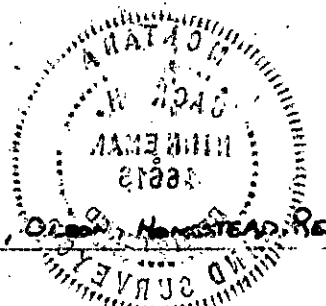
Eleanor L. Thompson, by Betty Keel
County Official

Sec. 29 Twp. 30 N., R. 33 W., P.M.M.

96



- 1) Found Brass Cap
- 2) Found Brass Cap by M.L. 42328.
- 3) Found Brass Cap by others.
- 4) Found Stone with "X" on top
scribed 1 on west side, 1 B.T.
- 5) Found B.L.N. Brass Cap
- 6) Set 5/8" x 24" Steel rod with
yellow cap stamped: J.H.N. 46618.
- 7) Set 5/8" x 24" Steel Rod with
Yellow Cap stamped: J.H.N. 46618.
- 8) Found B.L.N. Brass Cap.



SAMPSON, FAHLAND, OGDON, HANSTEAD, REALTY