

CERTIFIED LAND CORNER RECORDATION

PART OF SECTION 7 TOWNSHIP 30 NOTYH, RANGE 33 WEST, M.P.M.

DESCRIPTION OF CORNER EVIDENCE FOUND, AND ORIGINAL RECORD (IF KNOWN)

Diagram on other side shows corner information.

DESCRIPTION OF MONUMENT AND ACCESSORIES ESTABLISHED
TO PERPETUATE THE ORIGINAL LOCATION OF THIS CORNER:

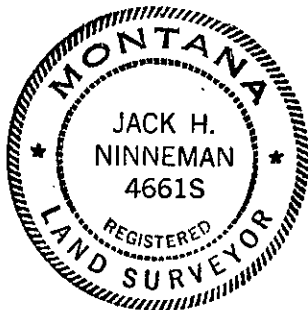
Date of work: July, 1977

Corner descriptions noyrf on diagram on other side.

SKETCH, WITH COURSE AND DISTANCE TO ADJACENT CORNERS IF DETERMINED IN THIS SURVEY.
(MAY SKETCH OR PASTE REPRODUCTION ON REVERSE SIDE.)

SEE DIAGRAM ON OTHER SIDE

Surveyor's Seal



I, Jack H. NINNEMAN
certify that the information shown herein is true and correct.

Jack H. Ninneman
Signature of Ground Party Chief

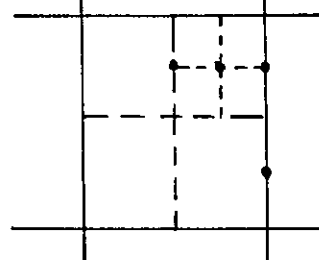
I, Jack H. Ninneman
certify that I have carefully performed or reviewed the work done on the diagrammed corner as reported on this recordation form and approve the same.

Jack H. Ninneman
Signature of Surveyor

DIAGRAM OF CORNER:

See reverse side

N. 7-30-33



• = Corner recorded on the sheet

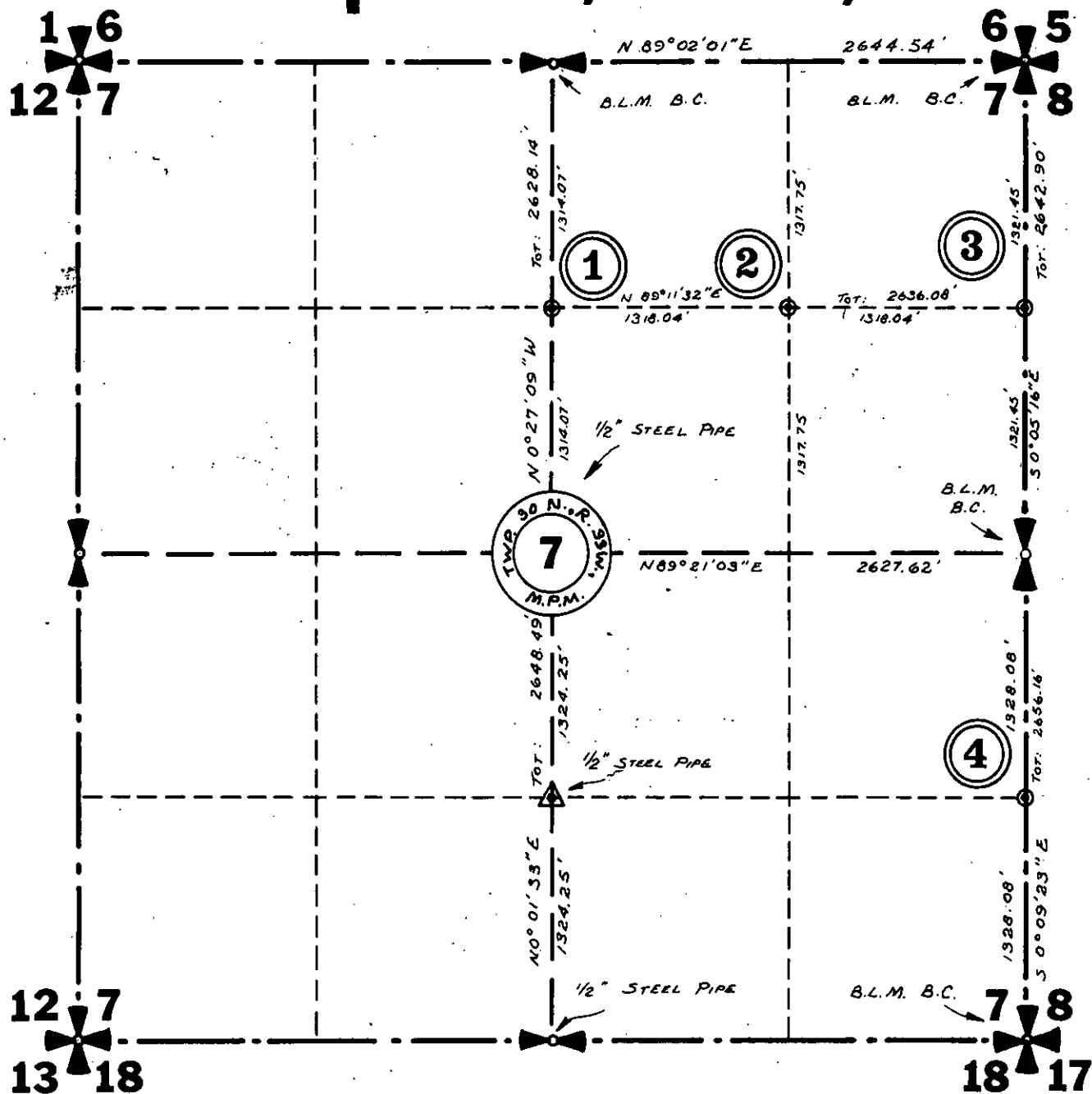
4661 S
Registration Number

Office of Clerk and Recorder, County of Lincoln

This "corner record" was filed for record on the 17th day of May 1978, was noted on the cross-index plat and is assigned page No. 526, in book No. 1

Eleanor L. Vaughan by Dorothy Martin
County Official

Sec. 7 Twp. 30 N., R. 33 W., M.P.M.



- (1) Set a Capped 5/8" X 24" Steel Rod
Cap Stamped: J.H.N. 4661 S.
- (2) Set a Capped 5/8" X 24" Steel Rod
Cap Stamped: J.H.N. 4661 S.
- (3) Set a Capped 5/8" X 24" Steel Rod
Cap Stamped: J.H.N. 4661 S.
- (4) Set a Capped 5/8" X 24" Steel Rod
Cap Stamped: J.H.N. 4661 S.