

- INSTRUCTIONS**
1. Original and/or subsequent record used to evaluate the corner position.
 2. Description of evidence found, note discrepancies in the record, state methods establishing lost or obliterated corners.
 3. Description of monument and accessories set to perpetuate the corner position.
 4. Sketch of corner, show all pertinent data which can best be shown in a sketch example, corner marking, topography etc., position of accessories, etc.
 5. Certification must be signed and sealed by Land Surveyor registered in the State of Montana.
 6. Fill in Cross Index & Section Diagram at bottom of sheet.

CERTIFIED CORNER RECORDATION

Corner E 1/16 Section 20 T. 30 N R. 33 W P.M.M. Lincoln County

I. DAVIS SURVEYING, INC. 1992

I set a 5/8 inch dia. x 24 inch long rebar with 1 1/4 inch dia. plastic cap stamped: KED 4975 S

FROM WHICH:

A 6 inch dia. DBH Pine bears S 54°E 9.75 feet from the center of the tree, scribed: E 1/16 S 20 BT (Notch at Root Crown)

A 7 inch dia. Grand Fir bears S 49°W 44.75 feet from the center of the tree, scribed: E 1/16 S 20 BT (Notch at Root Crown)

MAINTENANCE:

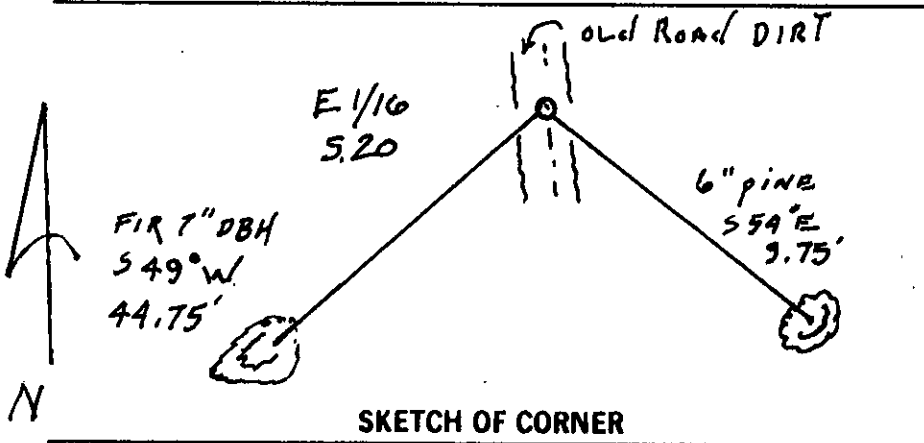
Painted BT and Land Survey Monument Signs.

Painted blazes red.

Painted a red band around the tree above the BT sign.

Set a steel post with Land Survey Sticker 1 foot North of the corner.

Declination = 20° E



CERTIFICATION

1. Kent Davis
certify the information shown herein is true and correct.

Kent Davis
Signature Ground Party Chief

1. Kent Davis
certify that this Corner Record correctly represents work performed by me, or under my direction in compliance with the "Corner Recordation Act" (70-22-101 et seq., M.C.A.)

Kenneth E. Davis
Signature of Surveyor & Seal

Date: 10/12/92 Reg. No. 4975 S
Employer: Davis Surveying, Inc.

Office of Clerk and Recorder, County of Lincoln. This "corner record" was filed for record on Oct 14, 1992 was noted on the cross-index plat and is assigned page No. 5099, in book No. _____

Coral M. Cummings by Bill Swadlow
County Official

