

- INSTRUCTIONS
1. Original or subsequent record used to evaluate the corner position.
 2. Description of evidence found, note discrepancies in the record, state method establishing lost or obliterated corners.
 3. Description of monument and accessories set to perpetuate the corner position.
 4. Sketch of corner, show all pertinent data which can best be shown in a sketch example, corner marking, topography lies, position of accessories, etc.
 5. Certification must be signed and sealed by Land Surveyor registered in the State of Montana.
 6. Fill in Cross Index & Section Diagram at bottom of sheet.

CERTIFIED CORNER RECORDATION

Corner N $\frac{1}{4}$ Section 20 T. 30 N. R. 33 W. P.M.M. Lincoln County

RECORD: 1893 Daniel Munbrun

Set a post 36 inch long 3 feet square, 24 inch in the ground

From Which:

A 14 inch dia. Pine which bears N 39°E 16 links (10.56 ft.) dist., marked $\frac{1}{4}$ S20 BT (Notch at Root Crown)

An 8 inch dia. Pine which bears S 33 $\frac{1}{4}$ °E 40 links (26.40 ft.) dist., marked $\frac{1}{4}$ S 20 BT (Notch at Root Crown)

FOUND:

No evidence of the existing mounument

I found a T bar and cap

MAINTENANCE:

At the corner position I set a 5/8 inch dia. rebar with a 1 $\frac{1}{4}$ inch plastic cap stamped: KED 4975 S

From which:

A 16 inch Tamarack bears N 10° E 51.16 feet from the center of the tree, cut out face, no scribe visible.

A 20 inch Spruce bears S 22°E 40.08 feet from the center of the tree, cut out face no scribe visible.

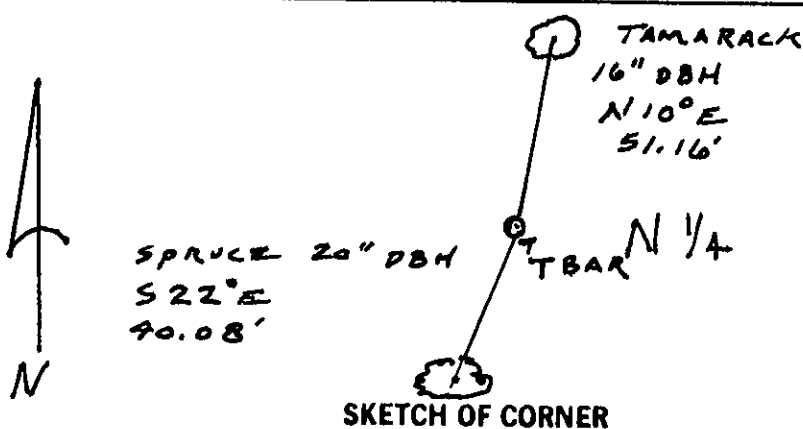
Painted BT and Land Survey Monument signs.

Painted blazes red.

Painted a red band around the tree above the BT sign.

Set a steel post with Land Survey Marker Sticker 1 foot North of the corner.

Declination = 20° E



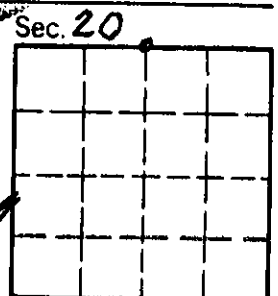
CERTIFICATION	
I, <u>Kent Davis</u>	
certify the information shown herein is true and correct.	
<u>Kent Davis</u> Signature Ground Party Chief	
I, <u>Kent Davis</u>	
certify that this Corner Record correctly represents work performed by me or under my direction in compliance with the "Corner Recordation Act" (70-22-101, et seq., M.C.A.)	
<u>Kent Davis</u> Signature of Surveyor & Seal	
Date: <u>6/12/92</u>	Reg. No. <u>4975 S</u>
Employer: <u>Davis Surveying, Inc.</u>	

Office of Clerk and Recorder, County of Lincoln. This "corner record" was filed for record on OCT 14, 1992 was noted on the cross-index plat and is assigned page No. 5098, in book No. _____

Coral M. Cummings by Bill Busch
County Official

Cross Index No. _____ T. _____ R. _____ P.M.M.

Adopted July 1, 1981, Montana Board of Professional Engineers & Land Surveyors



• - corner this sheet