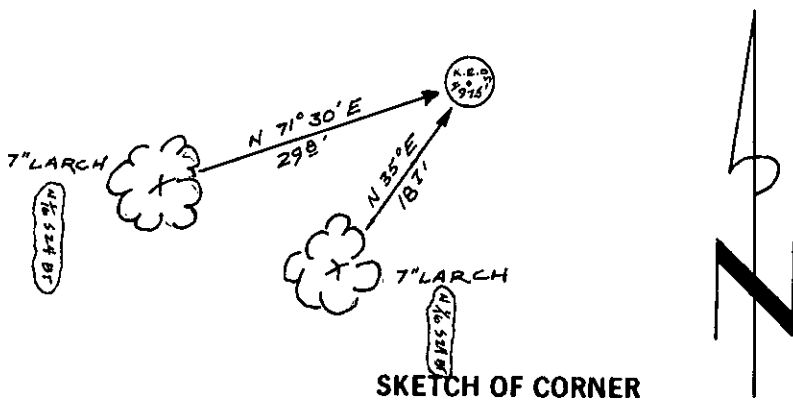


1. Original and/or subsequent record used to evaluate the corner position.
2. Description of evidence found, note discrepancies in the record, state method of establishing lost or obliterated corners.
3. Description of monument and accessories set to perpetuate the corner position.
4. Sketch of corner, show all pertinent data which can best be shown in a sketch example, corner marking, topography ties, position of accessories, etc.
5. Certification must be signed and sealed by Registered Land Surveyor in State of Montana.
6. Fill in Cross Index & Section Diagram at bottom of sheet.

Corner N 1/16 th. Sec. 19 T. 30 N. R. 33 W. P.M.M. Lincoln County

- 1) A larch 7 inches in diam. bears N 71°31'E 29.8 feet in distance, scribed N 1/16 Sec. 24 Bt.
- 2) A larch 7 inches in dia. bears N 35° E, 18.7 feet in distance, scribed N 1/16 Sec. 24 Bt. Painted the face scribe and red bands around each bearing tree and attached bearing tree signs on each.



Employer: Davis Surveying

County Official Grant D. Sugil by Bill Buckley

Cross Index No. _____ T. _____ R. _____ PMM

Sec.

SEC.
19

- - corner this sheet