

CERTIFIED LAND CORNER RECORDATION

SECTION 20 TWP. 30 N., R. 33 W., M.P.M.

DESCRIPTION OF CORNER EVIDENCE FOUND, AND ORIGINAL RECORD (IF KNOWN)

Original W $\frac{1}{4}$ Cor. - post with two B.T.s described in G.L.O. notes Steel "T" Bar set by #649 S
Original NW Cor.- post with marked stone and 2 B.T.s described in G.L.O. notes replaced by # 649 S with steel "T" bar - 4 B.T.s
North $\frac{1}{4}$ Corner is a steel "T" bar with 2 B.T. s - set by others
East $\frac{1}{4}$ Corner is a steel rod set by others
South $\frac{1}{4}$ Corner is a steel rod set by others

DESCRIPTION OF MONUMENT AND ACCESSORIES ESTABLISHED TO PERPETUATE THE ORIGINAL LOCATION OF THIS CORNER:

Date of work: July, '74 & Jan. '75

Corners set by this survey are $\frac{1}{2}$ "x24" steel rods with caps stamped JN 534 E.S.

SEE DIAGRAM ON REVERSE SIDE

SKETCH, WITH COURSE AND DISTANCE TO ADJACENT CORNERS IF DETERMINED IN THIS SURVEY. (MAY SKETCH OR PASTE REPRODUCTION ON REVERSE SIDE.)

SEE DIAGRAM ON REVERSE SIDE

Surveyor's Seal

I, Jack H. Ninneman

certify that the information shown herein is true and correct.

Jack H. Ninneman
Signature of Ground Party Chief

Jack W. Ninneman

I, certify that I have carefully performed or reviewed the work done on the diagrammed corner as reported on this recordation form and approve the same.

Jack W. Ninneman
Signature of Surveyor

DIAGRAM OF CORNER:

N. See reverse side

= Corner recorded on the sheet

#534 E.S.
Registration Number

Office of Clerk and Recorder, County of Lincoln

This "corner record" was filed for record on the 14th day of October 1975, was noted on the cross-index plat and is assigned page No. 389, in book No. 1

Eleanor L. Vaughn, Mrs. Watson, Deputy
County Official

T-Bar Steel

Set By

No. 649 S

4 B.T.s

18 17
19 20

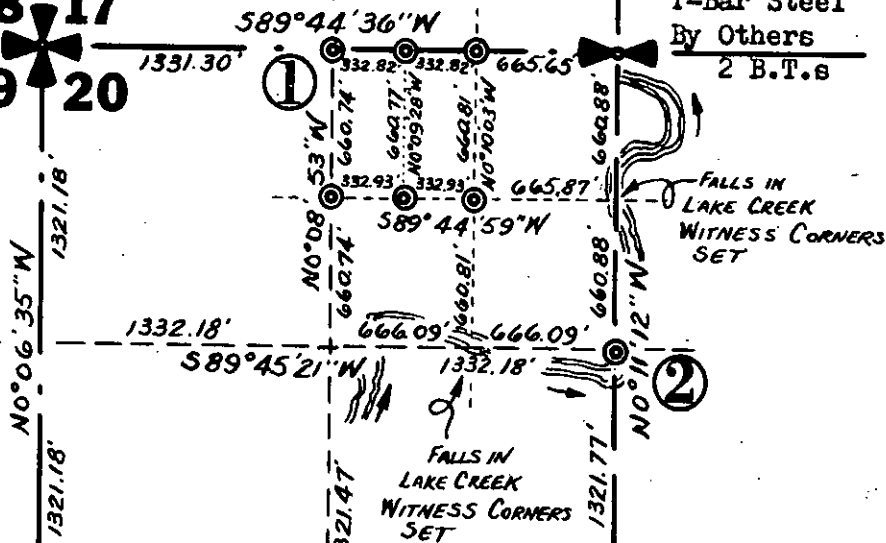
T. 30N., R. 33W.

T-Bar Steel

By Others

2 B.T.s

17 16
20 21



T-Bar Steel

Set By No.

649 S

1 B.T.

19 20
30 29

1333.06'

589°46'07\"W

1333.06'



2652.94'

589°46'07\"W

Steel Rod

Found

2632.38'
N0°11'12\"W

Steel Rod

Found 2 B.T.s

1. Set a $\frac{1}{2}$ "x24" Steel Rod
With Cap Stamped
J.N. 534 E.S.

2. Set A $\frac{1}{2}$ "x24" Steel Rod
With Cap Stamped
J.N. 534 E.S.

A 14" White Fir Bears N 55°W 27.70 Ft.
Scribed N 1/16 W & Posted
A 10" Fir Bears N 21°E 23.40 Ft.
Scribed N 1/16 W & Posted
Location Poster on Fence Post North 11.80 Ft.

Near Northwestern Bank of Lake Creek
No B.T.s Scribed or Posted.

- © Set $\frac{1}{2}$ "x24" Steel Rods
With Caps Stamped J.N. 534 E.S.

At Remaining Subdivision Corner Designated
(No B.T.s Scribed or Posted)

MORTON - RAAN - RAMSAY