

- INSTRUCTIONS
1. Original and subsequent record used to evaluate the corner position.
  2. Description of evidence found, note discrepancies in the record, state method of establishing lost or obliterated corners.
  3. Description of monument and accessories set to perpetuate the corner position.
  4. Sketch of corner, show all pertinent data which can best be shown in a sketch example, corner marking, topography ties, position of accessories, etc.
  5. Certification must be signed and sealed by Land Surveyor registered in the State of Montana.
  6. Fill in Cross Index & Section Diagram at bottom of sheet.

## CERTIFIED CORNER RECORDATION

Corner CN 1/16 Section 7 T. 30 N R. 33 W P.M.M. Lincoln County

- I. I found a 5/8" dia. rebar marked JHN 4661 S. out of position per C. of S. No. 357.  
(See detail below)
- II. Davis Surveying, Inc. 1987

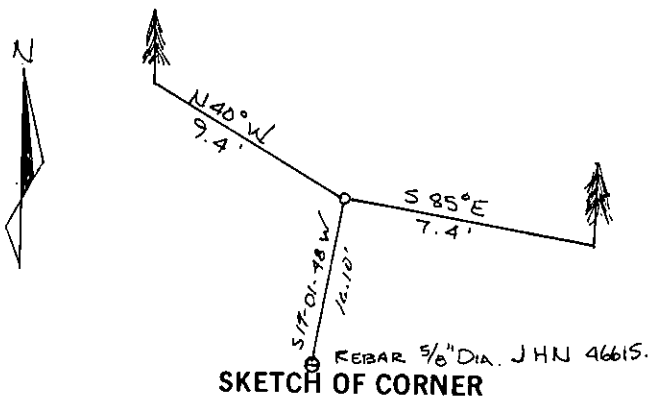
I set a 5/8" dia. x 2' long rebar with yellow PVC cap stamped: K.E.D. 4975 S from which;

A 10 inch white fir bears N 40° W 9.40 feet from center of tree scribed:  
S 7 CN 1/16 BT.

A 7" pine bears S 85° E 7.4 feet from center of tree scribed: S 7 CN 1/16 BT.  
Notched trees at root crown.

Painted a 6 inch red band around trees and placed location signs on front of both.

A 5/8 inch dia. rebar bears S 17° 01' 48" E 16.10 feet from corner marked JHN 4661 S.



CERTIFICATION

1. KEN E. DAVIS  
certify the information shown herein is true and correct.

Signature of Party Chief

1. KEN E. DAVIS  
certify that this Corner Record correctly represents work performed by me or under my direction in compliance with the "Corner Recordation Act" (70-22-101, et seq., M.C.A.)

Signature of Surveyor & Seal

Date: 9/87 Reg. No. 49755

Employer: DAVIS SURVEYING INC.

Office of Clerk and Recorder, County of Lincoln. This "corner record" was filed for record on Sept. 30, 1987 was noted on the cross-index plat and is assigned page No. 3661, in book No. \_\_\_\_\_

Janet BF Sugilly Bill Busch  
County Official Deputy

Sec. 7


• - corner this sheet