

- INSTRUCTIONS
1. Original and subsequent record used to evaluate the corner position.
 2. Description of evidence found, note discrepancies in the record, state method of establishing lost or obliterated corners.
 3. Description of monument and accessories set to perpetuate the corner position.
 4. Sketch of corner, show all pertinent data which can best be shown in a sketch example, corner marking, topography ties, position of accessories, etc.
 5. Certification must be signed and sealed by Land Surveyor registered in the State of Montana.
 6. Fill in Cross Index & Section Diagram at bottom of sheet.

CERTIFIED CORNER RECORDATION

Corner $\frac{1}{4}$ Section 7 (only) T. 30 N R. 33 W P.M.M. Lincoln County

I. 1893 GLO records Daniel Mumbrue

Set a post 3 ft. long 3 ins. square, 24 ins. in the ground for $\frac{1}{4}$ Sec. Corner marked $\frac{1}{4}$ S on W. face from which;

A fir tree 18 ins. diam. bears N 2° E 72 lks. distance marked $\frac{1}{4}$ S.B.T..

A fir tree 18 ins. dia. bears N 30.25° W. 16 lks. distance marked $\frac{1}{4}$ S.B.T.

II. 1910 G.L.O. Retracement Lewellyn D. Lyman

Set a lime stone 14 x 12 x 5 ins., 9 ins. in the ground for $\frac{1}{4}$ Sec. Cor. of Sec. 12 only marked $\frac{1}{4}$ on W. face, from which;

A tamarack 16 ins. in dia. bears N 47° W, 23 lks. dist. marked $\frac{1}{4}$ S 12 B.T.

A tamarack, 10 ins. in dia. bears S 42.25° W, 16 lks. dist. marked $\frac{1}{4}$ S 12 B.T.

The old $\frac{1}{4}$ Sec. Cor. post is in poor condition, there I

Set a lime stone, 18 x 15 x 10 ins. 12 ins. in the ground for $\frac{1}{4}$ Sec. Cor. of Sec. 7 (only) marked $\frac{1}{4}$ on E. Face, the Cor. is witnessed as described by the surveyor general.

III. I found the limestone marked $\frac{1}{4}$ on W. side for Section 12 only. I also found a stump hole bearing S 42.25° W 10.56 feet.

IV. Davis Surveying, Inc. 1987

I set a $3\frac{1}{2}$ ins. dia. aluminum monument on a 2' long rebar. (For Section 7 only) marked;

from which;

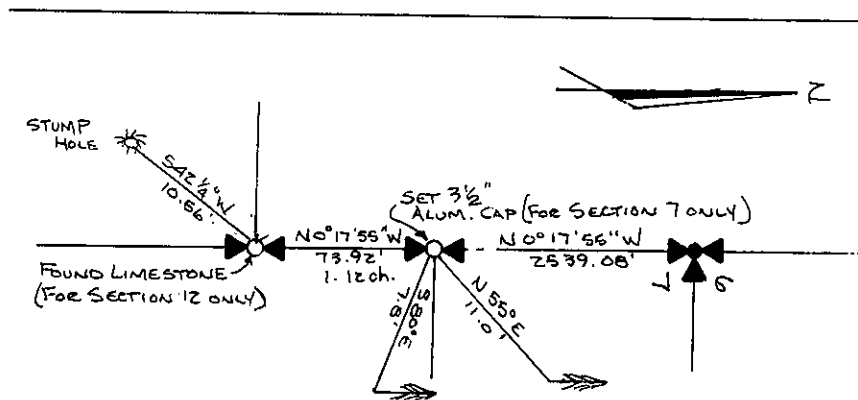
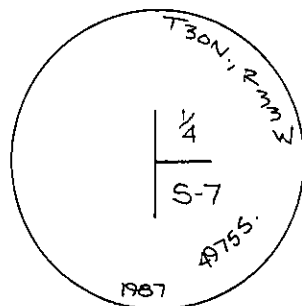
A 10 ins. pine tree bears N 55° W 11.0 feet from center of tree
Scribed $\frac{1}{4}$ S 7 BT.

An 8 ins. pine tree bears S 80° E 7.8 feet from center of tree
Scribed $\frac{1}{4}$ S 7 BT.

Notched BT's at root crown and painted a 6 ins. red band around trees.

Set an aluminum post 1 ft. SW of corner.

Placed location sign on front and warning sign No. 54.9 on back of trees.



SKETCH OF CORNER

CERTIFICATION

I, KENE DAVIS
certify the information shown herein is true and correct.

Tom DAVIS
Signature Ground Party Chief

I, KEN E. DAVIS
certify that this Corner Record correctly represents work performed by me or under my direction in compliance with the "Corner Recordation Act" (70-22-101, et seq., M.C.A.)

Ken E. Davis
Signature of Surveyor & Seal

Date: 9/87 Reg. No. 4975 S.

Employer: DAVIS SURVEYING INC.

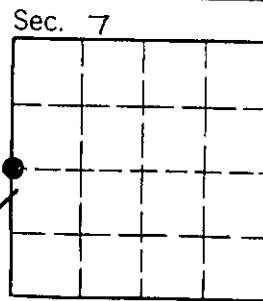
Office of Clerk and Recorder, County of Lincoln. This "corner

record" was filed for record on Sept 17, 1987

was noted on the cross-index plat and is assigned page No. 3657, in

book No. _____

Janet B. Siegelby
County Official Deputy



• - corner this sheet