

## INSTRUCTIONS

1. Original and/or subsequent record used to evaluate the corner position.
2. Description of evidence found, note discrepancies in the record, state method of establishing lost or obliterated corners.
3. Description of monument and accessories set to perpetuate the corner position.
4. Sketch or corner, show all pertinent data which can best be shown in a sketch example, corner marking, topography ties, position of accessories, etc.
5. Certification must be signed and sealed by Registered Land Surveyor in State of Montana.
6. Fill in Cross Index & Section Diagram at bottom of sheet.

## CERTIFIED CORNER RECORDATION

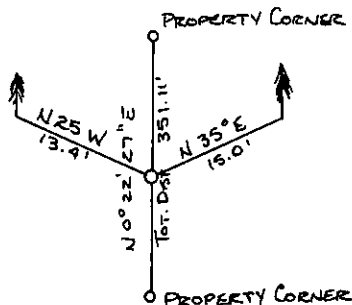
Corner NESE 1/64 Section 29 T. 30N. R. 33W. P.M.M. Lincoln County

I. 1986 Davis Surveying Inc.

I set a 5/8 inch dia. x 24 inch long rebar with Yellow PVC Cap, stamped: K.E.D. 4975S. from which;

A pine, 10" DBH, bears N.35°E. 15.0 feet from center of tree, Scribed S29 BT.  
A fir, 8" DBH, bears N.25°W., 13.4 feet from center of tree. Scribed S29 BT.

Painted a 6 inch wide red band around BTs with BT signs on front and warning sign #54.9 on back.



SKETCH OF CORNER

CERTIFICATION

I, Ken E. Davis  
certify the information shown herein is true and correct.

Ken E. Davis  
Signature of Party Chief

I, Ken E. Davis  
certify that this Corner Record correctly represents work performed by me or under my direction in compliance with the "Corner Recordation Act" of 1924.

Ken E. Davis  
Signature of Surveyor & Seal

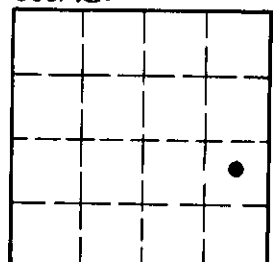
Date: 9/86 Reg. No. 4975 S.  
Employer: Davis Surveying Inc.

Office of Clerk and Recorder, County of Lincoln. This "corner record" was filed for record on the Sept 4 day of 1986 was noted on the cross-index plat and is assigned page No. 3341, in book No. \_\_\_\_\_

Janet E. Sugilby  
County Official Deputy

Cross Index No. \_\_\_\_\_ T. \_\_\_\_\_ R. \_\_\_\_\_ PMM

Sec. 29



• - corner this sheet