

CERTIFIED LAND CORNER RECORDATION

DESCRIPTION OF CORNER EVIDENCE FOUND, AND ORIGINAL RECORD (IF KNOWN)

Points described below were not set at the time of the original survey because these points are interior corners.

DESCRIPTION OF MONUMENT AND ACCESSORIES ESTABLISHED TO PERPETUATE THE ORIGINAL LOCATION OF THIS CORNER:

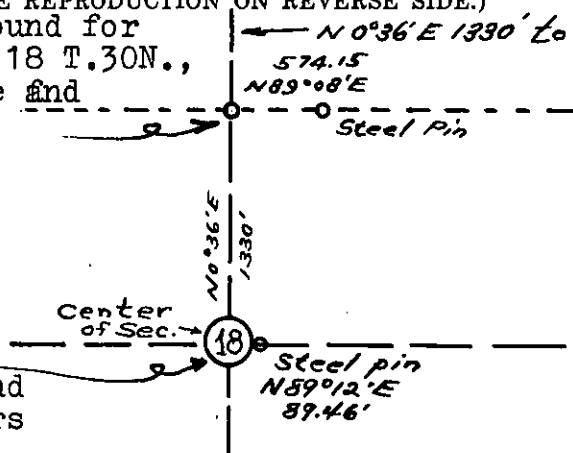
Date of work:.....

July 1963.

SKETCH, WITH COURSE AND DISTANCE TO ADJACENT CORNERS IF DETERMINED IN THIS SURVEY.

(MAY SKETCH OR PASTE REPRODUCTION ON REVERSE SIDE.)

Set a stone 14"x11"x7" - 10 " in ground for N1/16 cor on N-S centerline of Sec. 18 T.30N., R.33W., M.P.M. marked 1/16 on W. face and x on top from which a 5" Pine bears S70 E 4.0 feet marked 1/16



Set a stone 18x13x8" - 14 " in ground x on top from which a 16" Larch bears N62 1/2 E 41.0 feet marked S18 center

Tagged with U.S.B.T. sign

Surveyor's Seal

DIAGRAM OF CORNER:

N.
See above

I, J.W.Ninneman
certify that the information shown herein is true and correct.

Jack Ninneman
Signature of Ground Party Chief

I, J.W.Ninneman
certify that I have carefully performed or reviewed the work done on the diagrammed corner as reported on this recordation form and approve the same.

Jack Ninneman
Signature of Surveyor

= Corner recorded on the sheet

K-3
L-3

534 E.S.
Registration Number

Office of Clerk and Recorder, County of Lincoln

This "corner record" was filed for record on the 14th day of October 1963, was noted on the cross-index plat and is assigned page No. 2, in book No. 1

M. M. MANSFIELD, *Mae Watson*
County Official Deputy