

CERTIFIED LAND CORNER RECORDATION

DESCRIPTION OF CORNER EVIDENCE FOUND, AND ORIGINAL RECORD (IF KNOWN)

SECTION 20 TWP. 30 N., R. 33 W. M.P.M.

- #1 Found Standard BLM Brass Cap
- #3 Found Standard BLM Brass Cap
- #5 Found "T" Bar Marked $\frac{1}{4}$ Cor. Set by St. Regis Paper Co.

(SEE SKETCH ON BACK)

DESCRIPTION OF MONUMENT AND ACCESSORIES ESTABLISHED TO PERPETUATE THE ORIGINAL LOCATION OF THIS CORNER:

Date of work: Dec. 1968

- #2 Set Steel Pin 3 Ft. Long At $\frac{1}{2}$ The Distance And On Line Between Corners No. 1 and 3 Scribed and Poasted Two Bearing Trees. Cor. Falls In Road. Set Steel Pin In Fence 30 Ft. East For Witness Corner.
- #4 Set 2" Dia. Pipe $2\frac{1}{2}$ Ft. Long at $\frac{1}{2}$ The Distance and On Line Between , Corners No. 3 and 5

(SEE SKETCH ON BACK)

SKETCH, WITH COURSE AND DISTANCE TO ADJACENT CORNERS IF DETERMINED IN THIS SURVEY. (MAY SKETCH OR PASTE REPRODUCTION ON REVERSE SIDE.)

(SEE SKETCH ON BACK)

Surveyor's Seal

I, Jack H. Ninneman, certify that the information shown herein is true and correct.

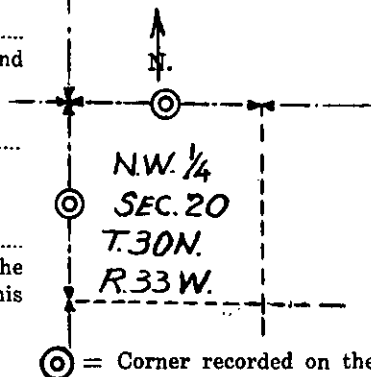
Jack H. Ninneman
Signature of Ground Party Chief

I, Jack W. Ninneman, certify that I have carefully performed or reviewed the work done on the diagrammed corner as reported on this recordation form and approve the same.

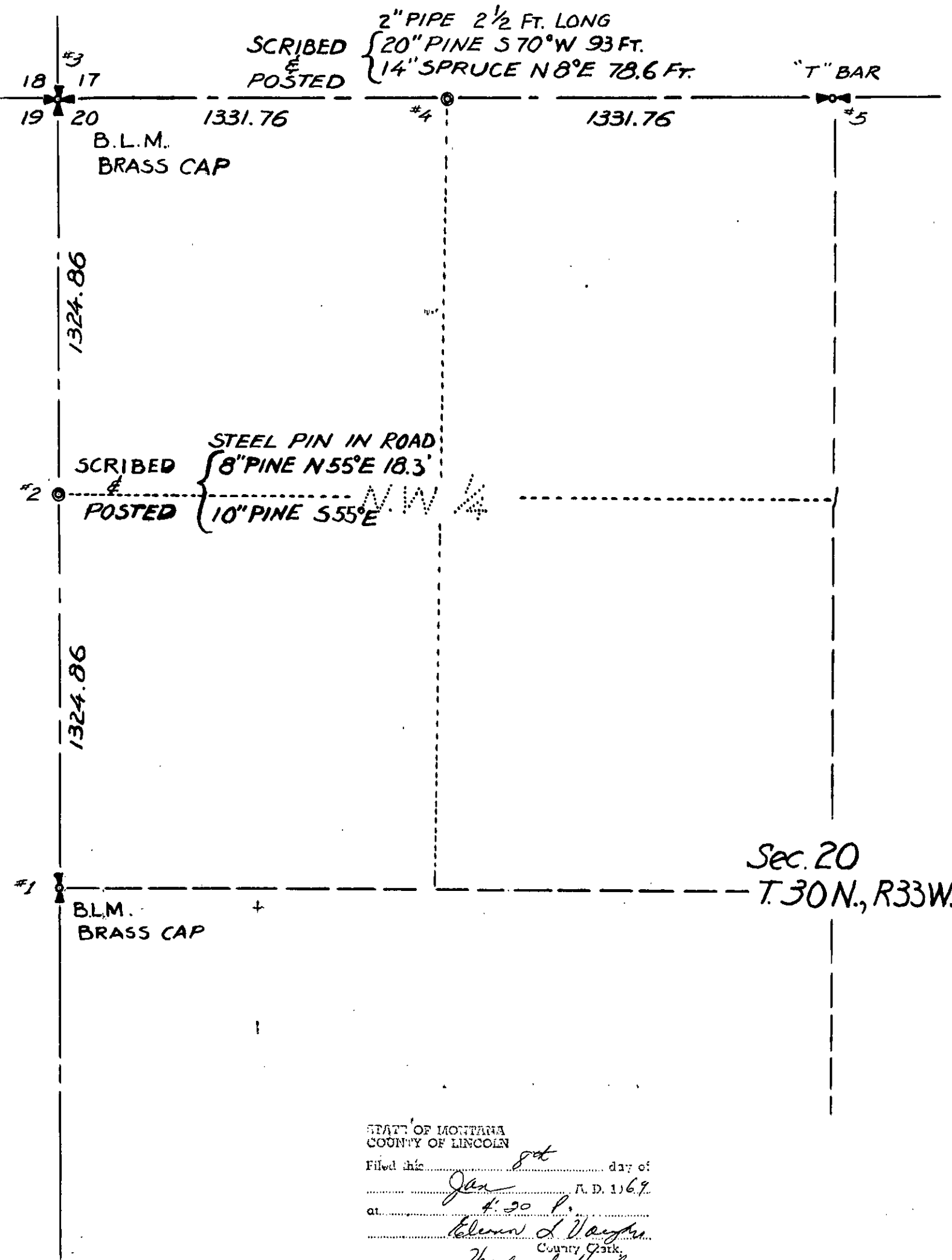
Jack W. Ninneman
Signature of Surveyor

Montana 534 E.S.
Registration Number

DIAGRAM OF CORNER:



Office of Clerk and Recorder, County of Lincoln
This "corner record" was filed for record on the 8th day of January 1969, was noted on the cross-index plat and is assigned page No. 120, in book No. 1
Eleanor L. Vaughn
County Official
N-6
0-5
Cross Index No. 0-5 T. 30 R. 33 Mer.



2" PIPE 2 1/2 FT. LONG
SCRIBED { 20" PINE S 70° W 93 FT.
POSTED { 14" SPRUCE N 8° E 78.6 FT.

"T" BAR

1331.76

1331.76

B.L.M.
BRASS CAP

1324.86

1324.86

STEEL PIN IN ROAD
SCRIBED { 8" PINE N 55° E 18.3'
POSTED { 10" PINE S 55° E

STATE OF MONTANA
COUNTY OF LINCOLN
Filed this 8th day of
Jan A. D. 1969
at 4:30 P.
Eleonore L. Vaughn
County Clerk.
By Verda L. Hayden
Deputy