

CERTIFIED CORNER RECORDATION

CORNER N 1/4 COR S 29 T. 30 N., R. 33 W., P.M.M. LINCOLN COUNTY

RECORD:

Set 3 1/4 inch dia. Brass Cap stamped MDL 4232-S

FOUND EVIDENCE:

Found bent 3 1/4 inch dia. Brass Cap Stamped MDL 4232-S

A uprooted 8 inch DBH cedar with bearing tree tag

PERPETUATION:

Set a 3 1/4 inch aluminum cap stamped (see diagram below) on a 5/8 inch dia. rebar 20 inches long.
From which

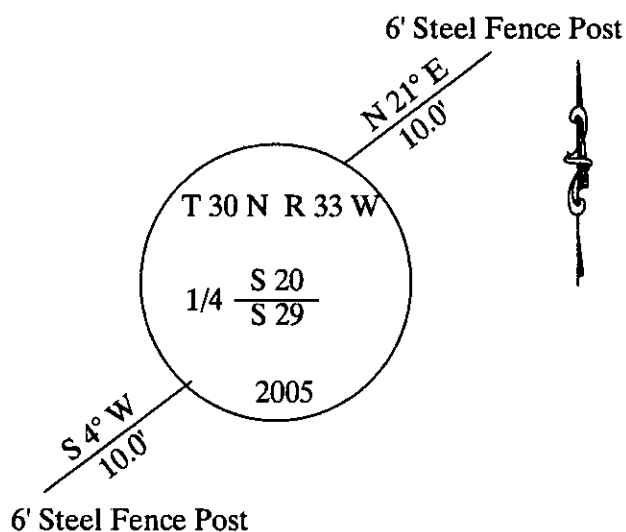
A 6 foot steel fence post in S 20 bears N 21° E 10.0 feet.

A 6 foot steel fence post in S 29 bears S 4° W 10.0 feet.

Attached bearing tree signs to all posts.



MAGNETIC DECLINATION: 18° E



CERTIFICATION

I, GEORGE CLARK

Certify the information shown herein is true and correct

Signature of Ground Party Chief

I, KENNETH E. DAVIS

certify that this Corner Record correctly represents work performed by me or under my direction in compliance with the "Corner Recordation Act" (70-2-101, et seq., M.C.A.)

Signature of Surveyor & Seal

Date: 3/30/05 Reg. No. 4975-S

Employer: Davis Surveying Inc

SKETCH OF CORNER

Office of Clerk and Recorder, County of _____

This 183623 BOOK: CCR CC&R'S PAGE: 10786 Pages: 1

Was: STATE OF MONTANA LINCOLN COUNTY

No RECORDED: 04/08/2005 8:35 KOI: CC&R'S

In: CORAL M. CUMMINGS CLERK AND RECORDER

FEE: \$0.00

BY: Coral M. Cummings

TO: FILED

N 1/4 COR. S 29

Cross Index No. _____ T. 30 N., R. 33 W., P.M.M.

SECTION



THIS CORNER